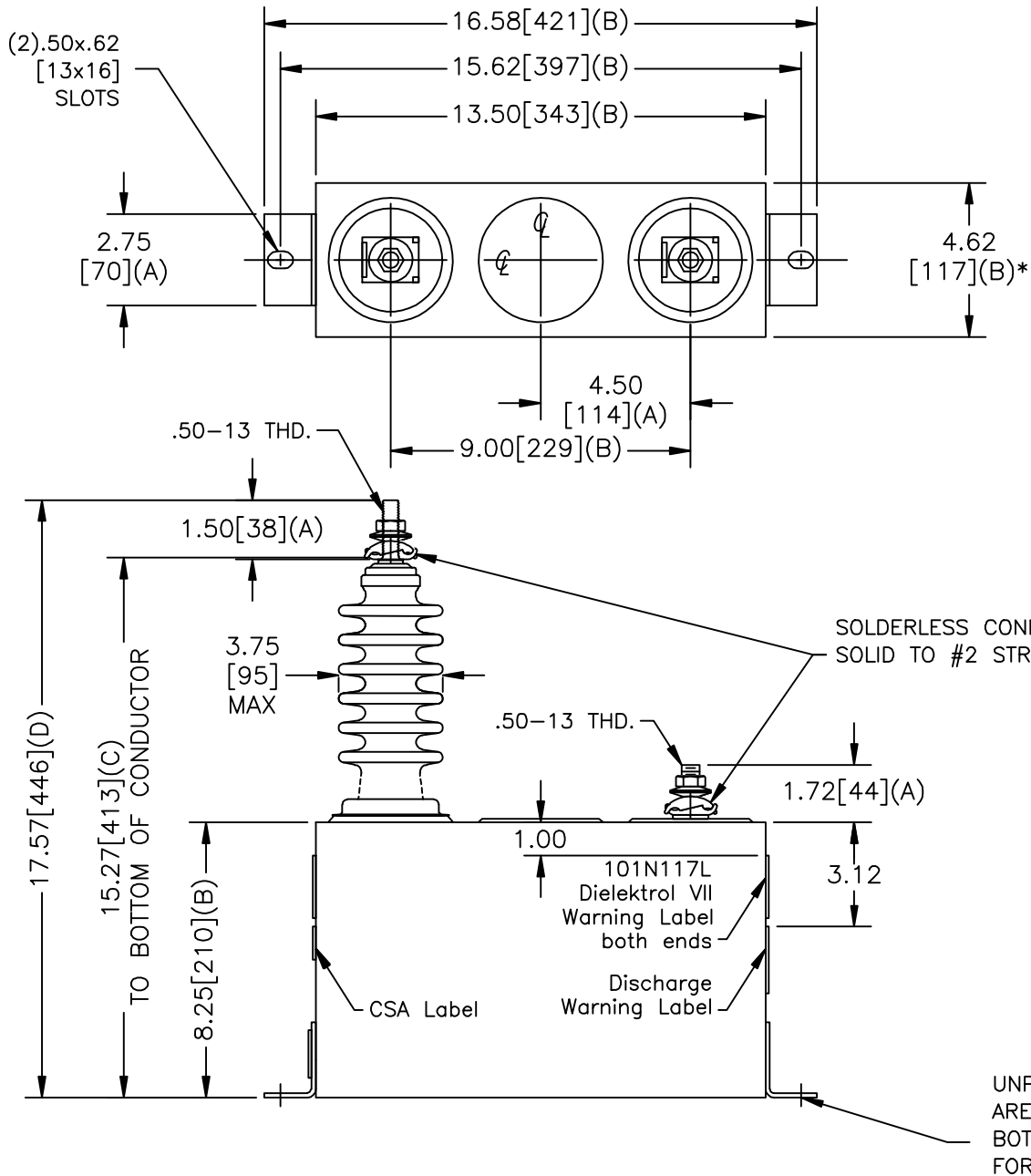
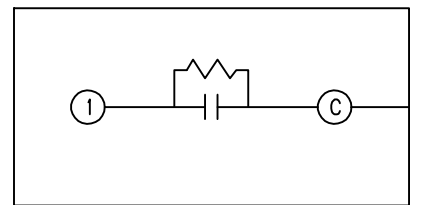


SIZE A	DWG NO 18L0009WH	SHT 2	REV 3
REV 3	DESCRIPTION CASE HT WAS 8.50	DATE 5/15/2009	APPROVED BTR



TOL	IN.	MM
A	.06	1.5
B	.12	3.0
C	.18	4.6
D	.25	6.4



13800 VAC
.25 UF
1 POLE KVAR
CAT 18L0009WH
101N171

110 kVBIL
Hz 50/60
SN
1.1 GAL.
MFG DATE
READ GEH- 2730

GE ENERGY FORT EDWARD, N.Y., U.S.A.	SIZE A	OUTLINE 18L0009WH	SHEET 2	CONT ON -
	DRAWN D.E.Stone ISSUED			

DISTR. TO