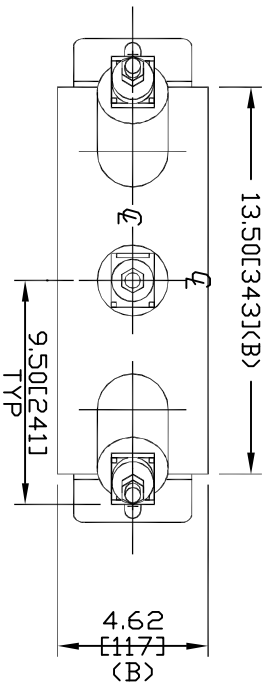
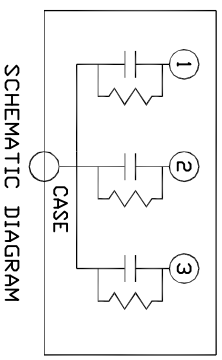
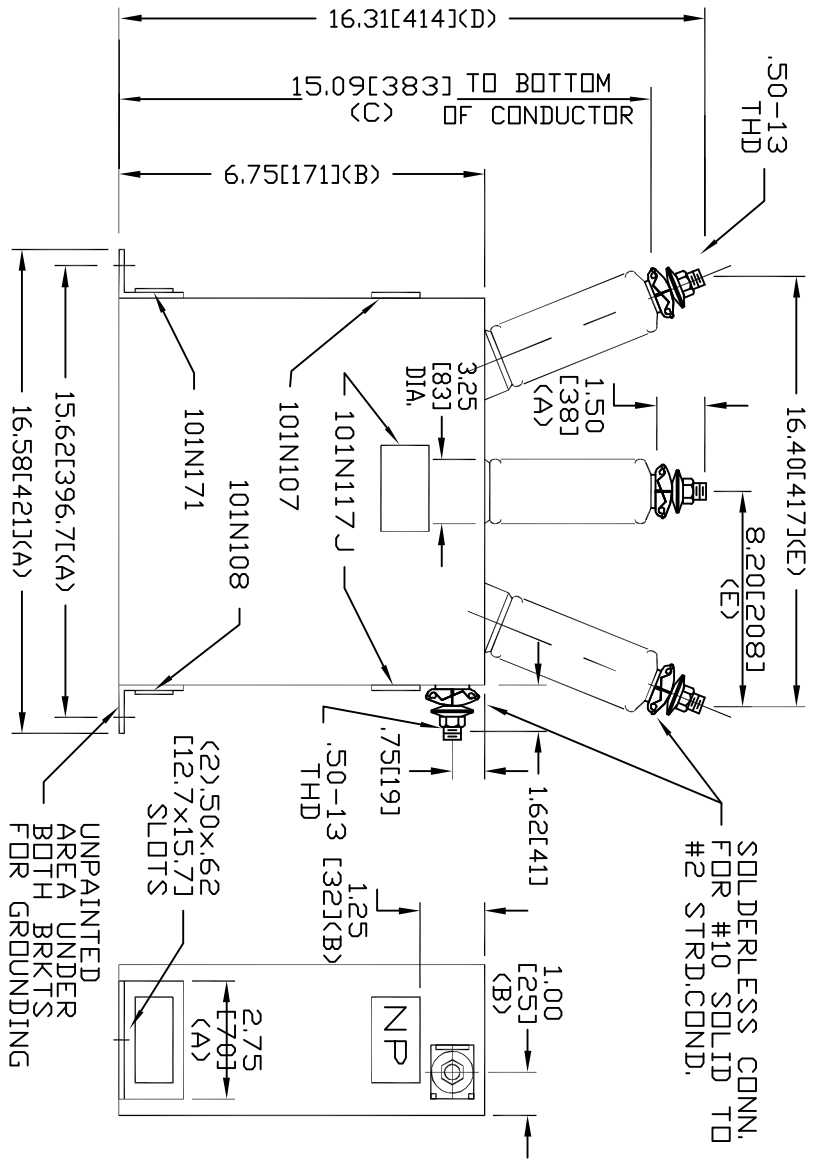


SIZE	DWG. NO.	SH	REV
A	18L0062WH	2	
REV 1	MCGINN ADD 101N107+108		



TOL	IN	MM
A	.06	1.5
B	.12	3.0
C	.18	4.6
D	.25	6.4
E	.50	12.7



4160 DR 2400 VAC
 1.5uF 110 KV/BIL
 3 POLE KVAR HZ 50/60
 CAT. 18L0062WH SN
 .70 GAL.
 MFG DATE
 READ GEH-2730
 101N171

UNPAINTED
 AREA UNDER
 BOTH BRKTS
 FOR GROUNDING

 CAPACITOR & POWER PROTECTION OPERATION LOCATION: FORT EDWARD, N.Y., USA.	SIZE	A
	SCALE	
DRAWN D.E.Stone ISSUED 10-2-96	10/1/96	16D-96
<h1>OUTLINE</h1> <h2>18L0062WH</h2>		
SHEET 2 OF 2		