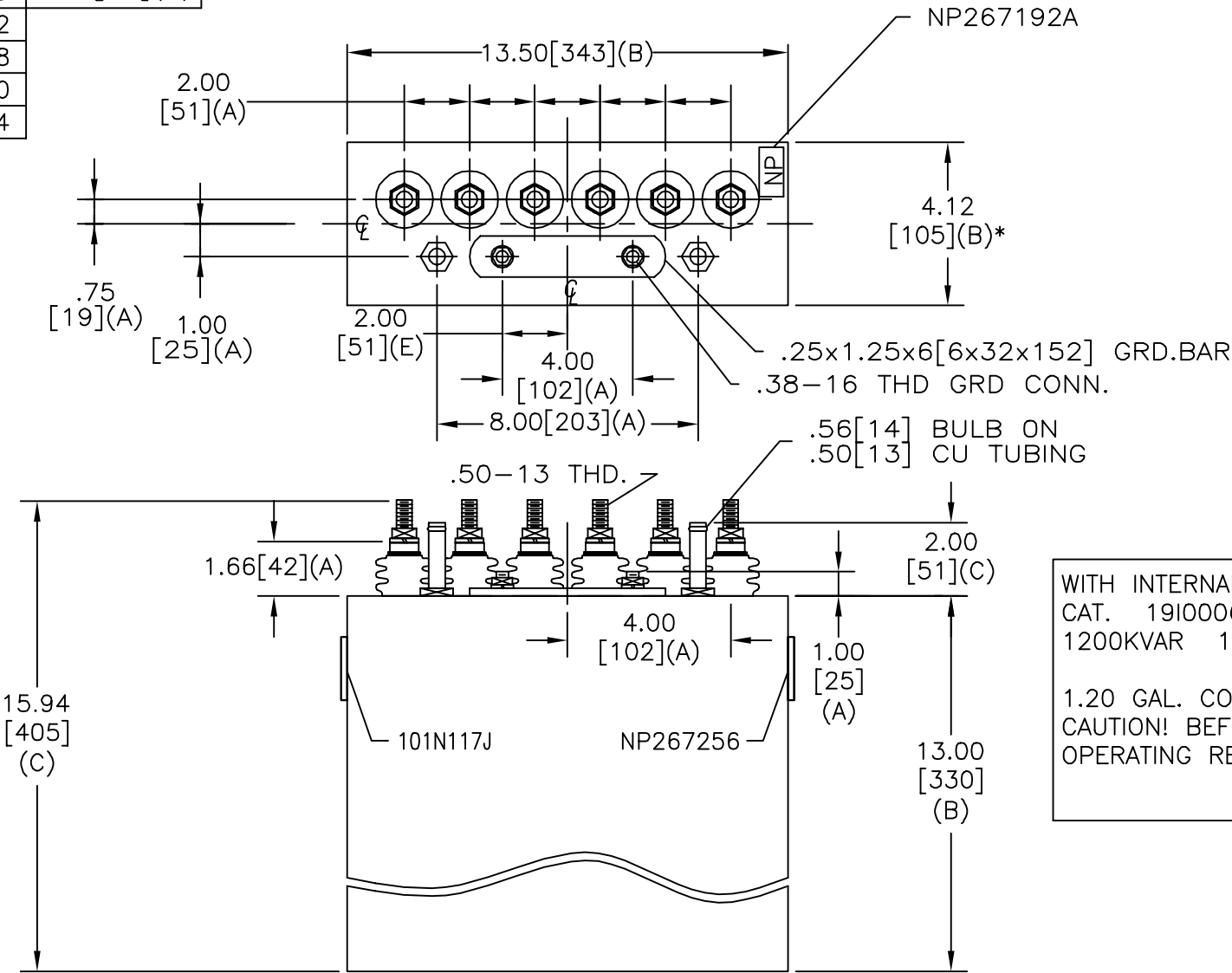
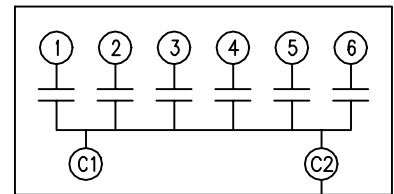


SIZE A	DWG NO 19L0006WH8	SHT 2	REV
REV	DESCRIPTION	DATE	APPROVED

TOL	+/-	BUSH. DIA.
A	.06	1.75[44](B)
B	.12	
C	.18	
D	.50	
E	.04	



TERM	uF	kVAR
1	17	200
2	17	200
3	17	200
4	17	200
5	17	200
6	17	200



SCHEMATIC DIAGRAM - 601

WITH INTERNAL DISCH RESISTORS
 CAT. 19I0006WH SN
 1200KVAR 1250V 1200HZ 1PH
 1.20 GAL. COMBUSTIBLE LIQUID
 CAUTION! BEFORE INSTALLING OR
 OPERATING READ GEH-2733
 NP267214

* UP TO +.50[13] CASE BULGE

MAX. TERMINAL TIGHTENING TORQUE 15 FT-LBS

NP267192A

INDUSTRIAL SYSTEMS FORT EDWARD, N.Y., U.S.A.	SIZE	A
	DRAWN	
ISSUED	DATE	DATE
		SCALE

<h1>OUTLINE</h1> <h2>19L0006WH8</h2>	
SHEET 2	CONT ON -

DISTR. TO