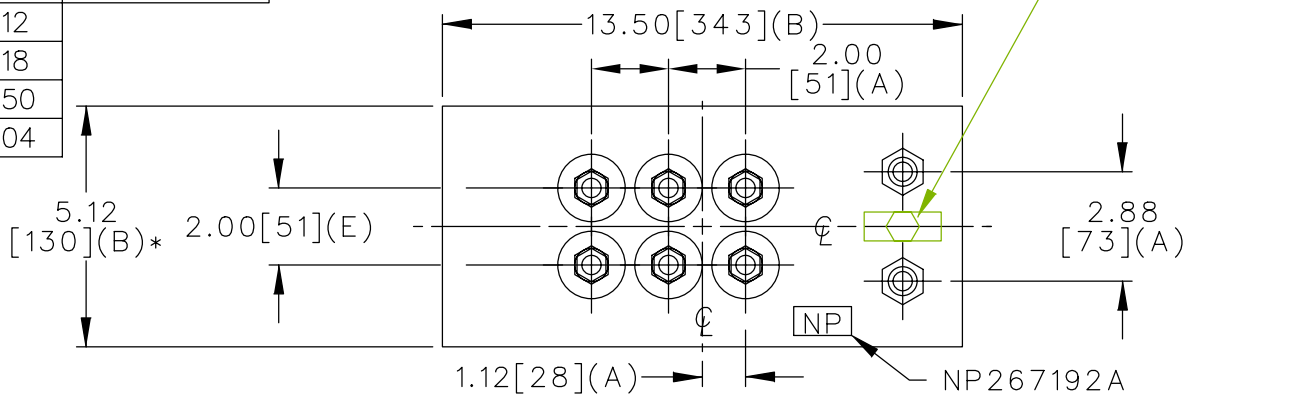
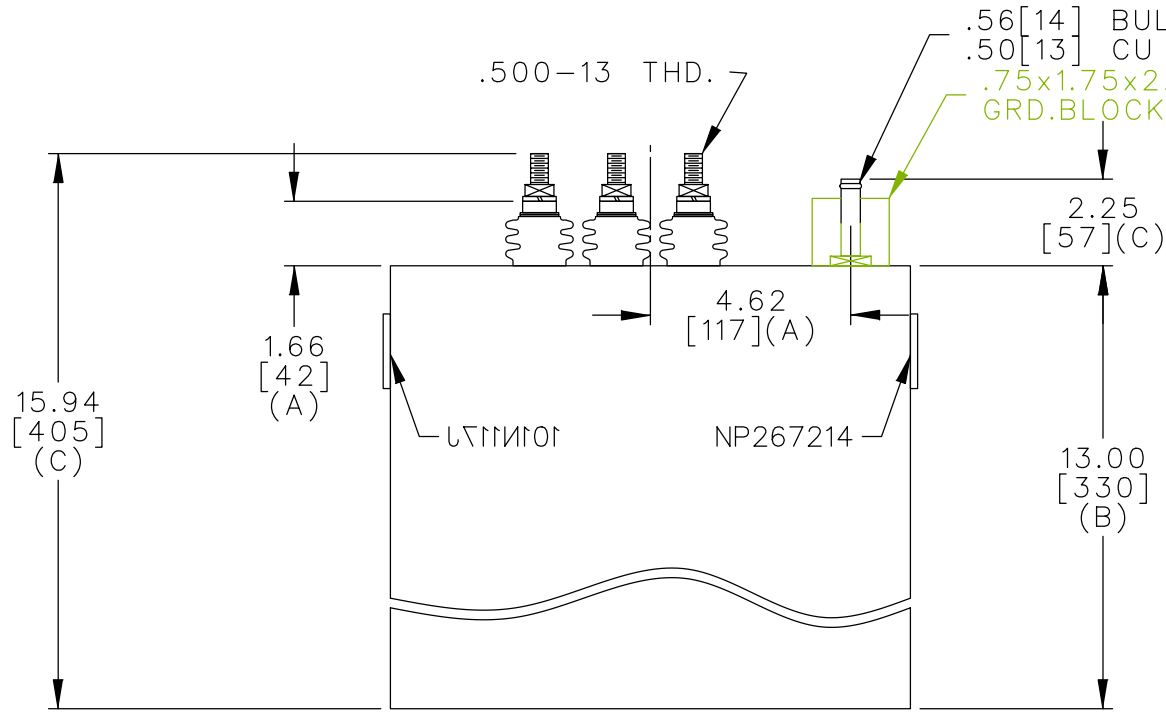
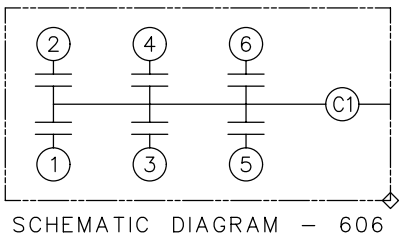


TOL	+/-	BUSH. DIA.
A	.06	1.75[44](B)
B	.12	
C	.18	
D	.50	
E	.04	



TERM	uF	kVAR
1	25	150
2	25	150
3	29.2	175
4	29.2	175
5	29.2	175
6	29.2	175



NO INTERNAL DISCH RESISTORS
 CAT. 19L0031WH1 SN
 1000KVAR 940V 1080HZ 1PH
 2x25+4x29.2UF/TAP
 1.7 GALS. COMBUSTIBLE LIQUID
 CAUTION! BEFORE INSTALLING OR
 OPERATING READ GEH-2733
 NP267214

* UP TO +.50[13]
 CASE BULGE

MAX. TERMINAL
 TIGHTENING TORQUE
 15 FT-LBS

NP267192A

	CAPACITOR & POWER PROTECTION FORT EDWARD, N.Y., U.S.A.		SIZE A	OUTLINE 19L0031WH1		SHEET 2	CONT. ON -
	DRAWN E.McGINN	JULY 27, 1998	SCALE				
ISSUED	7-29-98						

DISTR TO