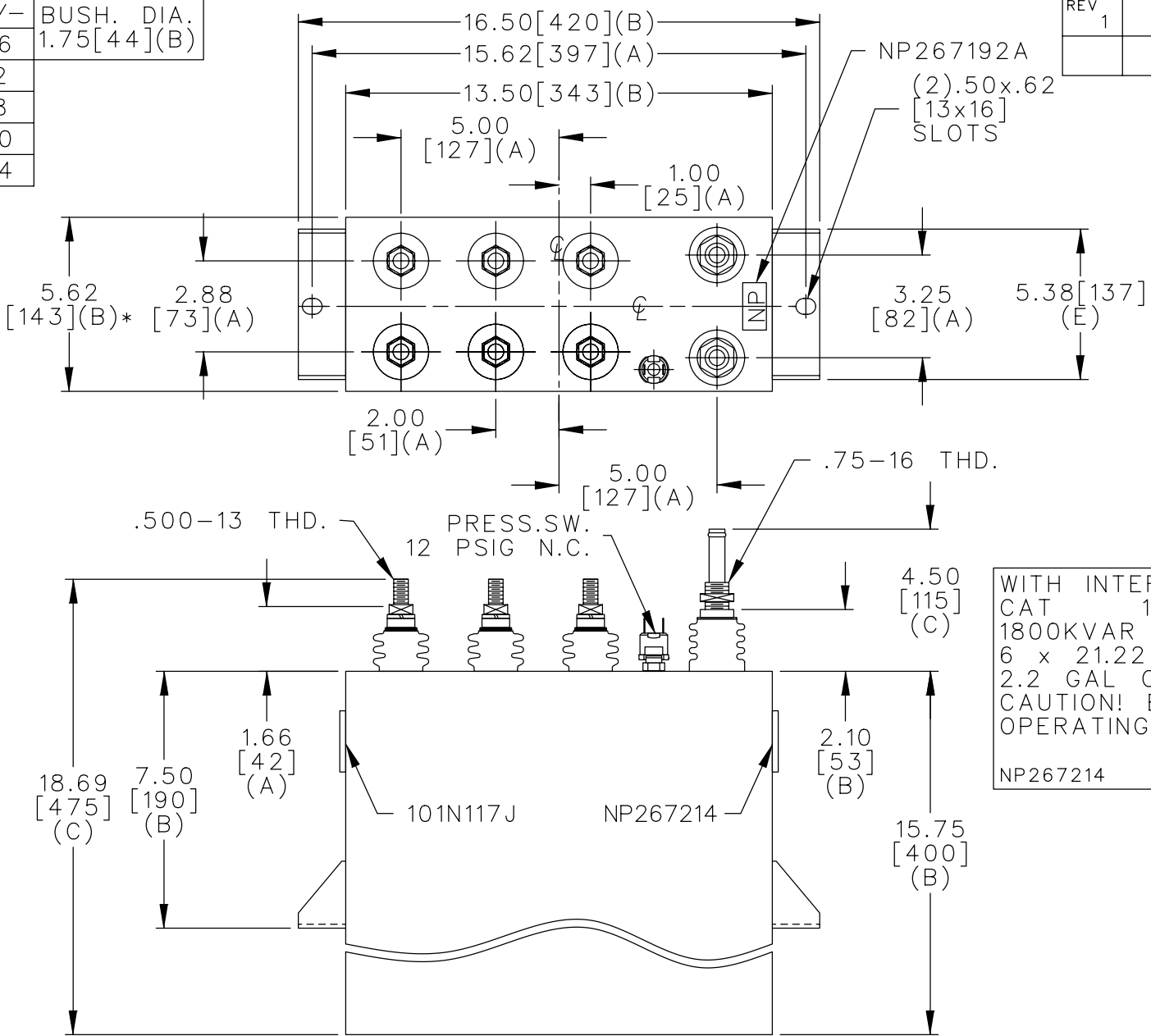
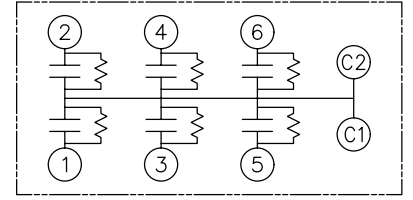


TOL	+/-	BUSH. DIA.
A	.06	1.75[44](B)
B	.12	
C	.18	
D	.50	
E	.04	

SIZE	DWG NO.	SH	REV
A	19L0048WH4		
REV	1	McGINN UPDATE CAT NO	



TERM	uF	kVAR
1	300	21.22
2	300	21.22
3	300	21.22
4	300	21.22
5	300	21.22
6	300	21.22



SCHEMATIC DIAGRAM - 617

WITH INTERNAL DISCH RESISTORS
 CAT 19L0048WH4 SN
 1800KVAR 1500V 1000HZ 1PH
 6 x 21.22 UF/TAP
 2.2 GAL COMBUSTIBLE LIQUID
 CAUTION! BEFORE INSTALLING OR
 OPERATING READ GEH-2733
 NP267214

* UP TO +.50[13] CASE BULGE

MAX. TERMINAL TIGHTENING TORQUE 15 FT-LBS

NP267192A

	CAPACITOR & POWER PROTECTION FORT EDWARD, N.Y., U.S.A.		SIZE A	OUTLINE 19L0048WH4		SHEET 2 CONT. ON -
	DRAWN E.McGINN	JAN. 17, 1997	SCALE			
ISSUED	1-22-97		DISTR TO			