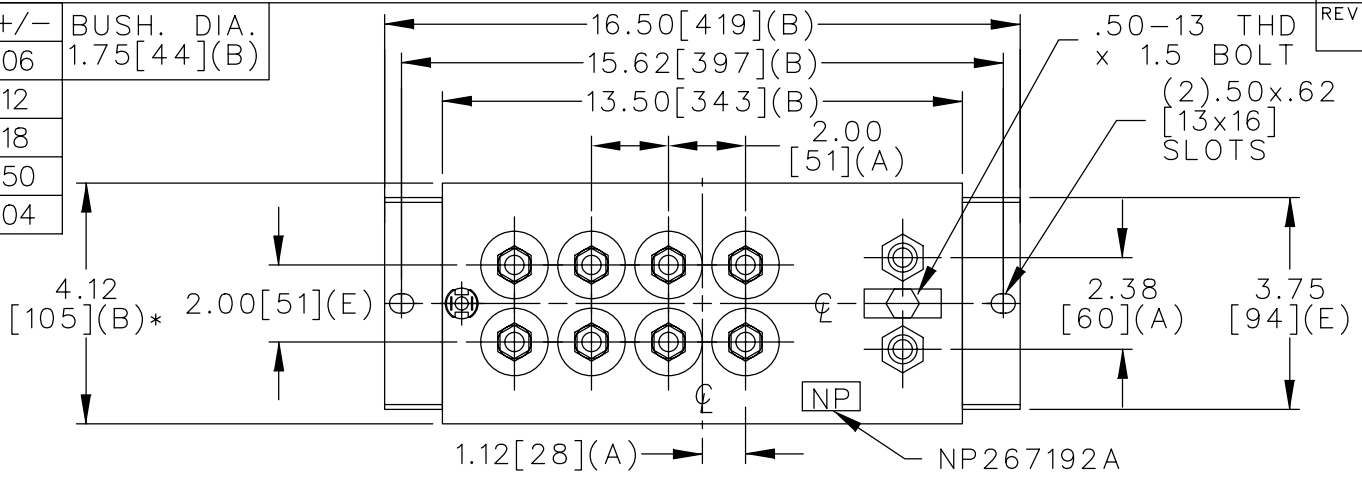
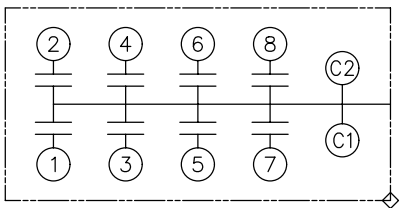


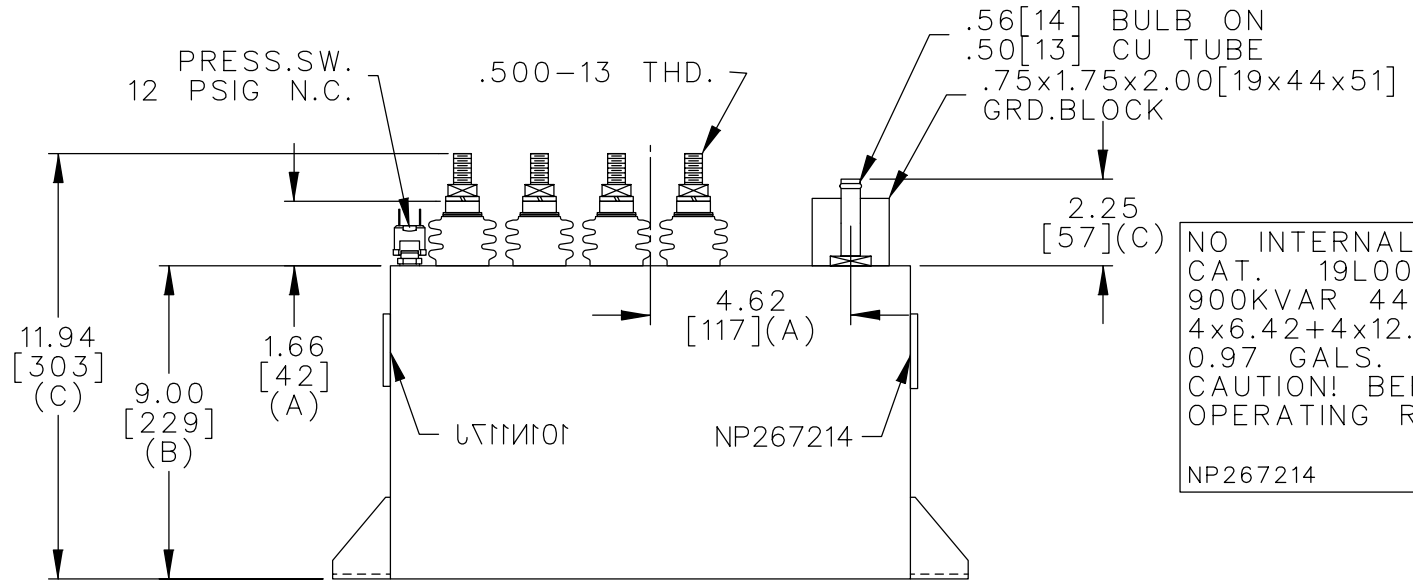
TOL	+/-	BUSH. DIA.
A	.06	1.75[44](B)
B	.12	
C	.18	
D	.50	
E	.04	



TERM	uF	kVAR
1	6.42	75
2	6.42	75
3	6.42	75
4	6.42	75
5	12.84	150
6	12.84	150
7	12.84	150
8	12.84	150



SCHEMATIC DIAGRAM - 801



NO INTERNAL DISCH RESISTORS  
 CAT. 19L0051WH4 SN  
 900KVAR 440V 9600HZ 1PH  
 4x6.42+4x12.84 UF/TAP  
 0.97 GALS. COMBUSTIBLE LIQUID  
 CAUTION! BEFORE INSTALLING OR  
 OPERATING READ GEH-2733  
 NP267214

\* UP TO +.50[13] CASE BULGE

MAX. TERMINAL TIGHTENING TORQUE 15 FT-LBS

NP267192A

<p>CAPACITOR &amp; POWER PROTECTION FORT EDWARD, N.Y., U.S.A.</p>	SIZE <b>A</b>	<p><b>OUTLINE</b> <b>19L0051WH4</b></p>
	<p>DRAWN E.McGINN NOV. 30, 2000</p>	
<p>ISSUED</p>	<p>SCALE</p>	<p>DISTR TO</p>