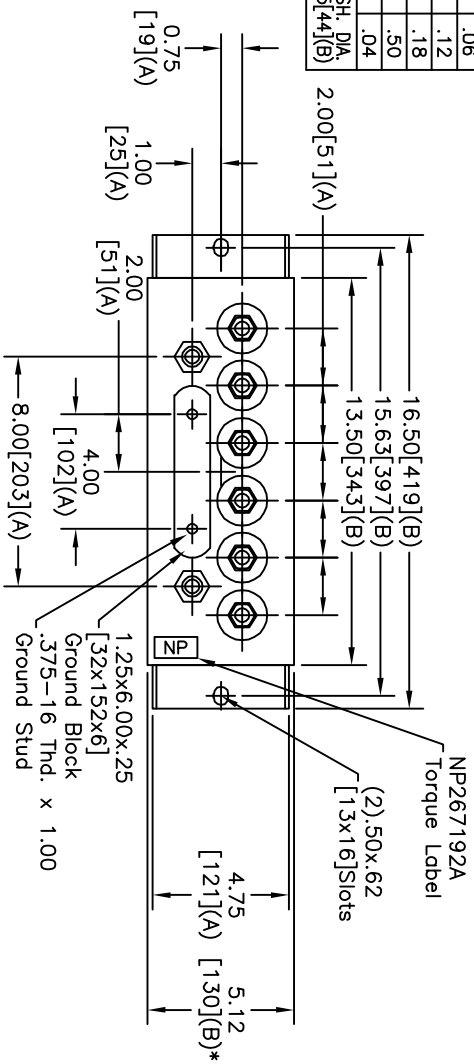
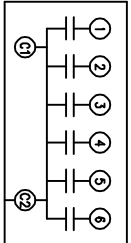
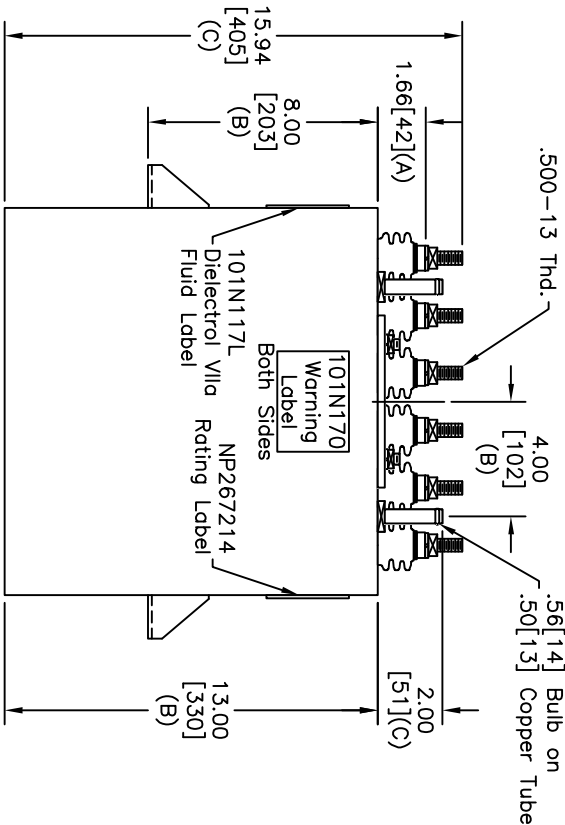


TOL	+/-
A	.06
B	.12
C	.18
D	.50
E	.04
BUSH, DIA.	1.75[44](B)



TERM	UF	KVAR
1	26.5	166.5
2	26.5	166.5
3	26.5	166.5
4	26.5	166.5
5	26.5	166.5
6	26.5	166.5



NO INTERNAL DISCH RESISTORS  
 CAT. 19L0065WH3026 SN  
 1000KVAR 1000V 1000HZ 1PH  
 6x26.5UF/TAP  
 1.6 GAL. COMBUSTIBLE LIQUID  
 CAUTION! BEFORE INSTALLING OR  
 OPERATING READ GEH-2733  
 MADE IN USA  
 NP267214

- NOTES:  
 1. Maximum terminal tightening torque  
 .50-13 thd. 15 ft-lbs. 20.3 N-m  
 .75-16 thd. 25 ft-lbs. 33.9 N-m  
 2. Minimum water flow 1 GPM (3.8 l/m)

SIZE	DWG NO	SHT	REV
A	19L0065WH3026	2	1
REV	DESCRIPTION	DATE	APPROVED
1	NEW	3/23/2007	BTR

\* UP TO +.50[13]  
 CASE BULGE  
 MAX. TERMINAL  
 TIGHTENING TORQUE  
 15 FT-LBS.  
 NP267192A

GE ENERGY  
 FORT EDWARD, N.Y., U.S.A.

DRAWN B. ROSS  
 DATE 3/7/2007

ISSUED DATE 3/7/2007

SIZE A  
 SCALE  
 Est Weight 50 lbs.  
 W/C9

OUTLINE  
 19L0065WH3026  
 SHEET 2 CONT -

DISTR. TO