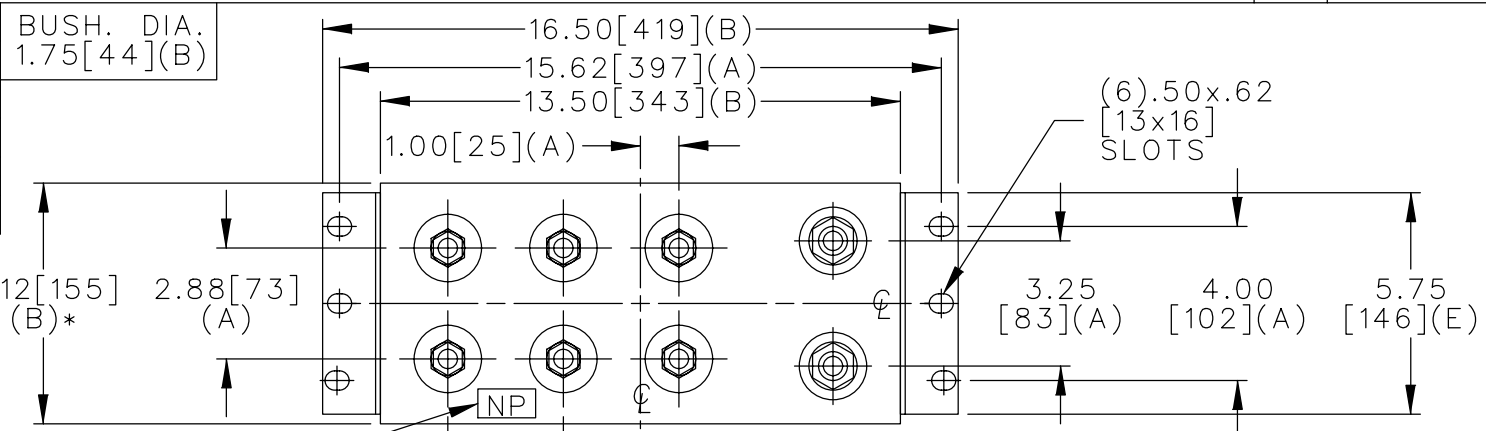
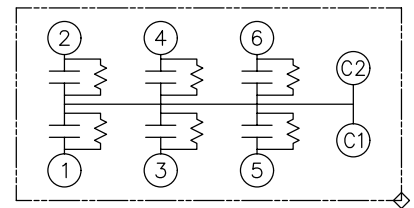
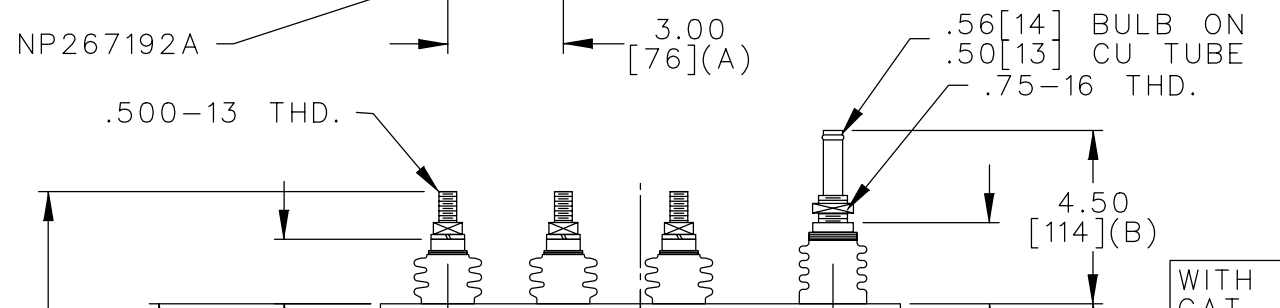


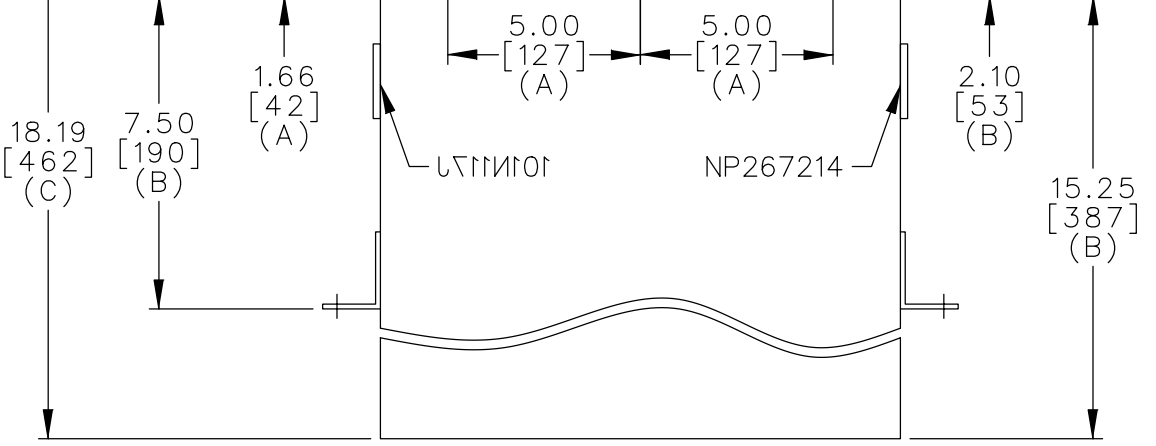
TOL	+/-
A	.06
B	.12
C	.18
D	.50
E	.04



TERM	KVAR
1	300
2	300
3	300
4	300
5	300
6	300



SCHEMATIC DIAGRAM - 617



WITH INTERNAL DISCH RESISTORS
 CAT. 19L0072WH3 SN
 1800KVAR 3000V 1000HZ 1PH
 6X5.3 UF/TAP
 2.3 GAL. COMBUSTIBLE LIQUID
 CAUTION! BEFORE INSTALLING OR
 OPERATING READ GEH-2733
 NP267214

* UP TO +.50 [13] CASE BULGE

MAX. TERMINAL TIGHTENING TORQUE 15 FT-LBS

NP267192A

<p>CAPACITOR & POWER PROTECTION FORT EDWARD, N.Y., U.S.A.</p>	SIZE A	<p>OUTLINE 19L0072WH3</p>	DISTR TO
	<p>DRAWN E.McGINN DEC. 14, 2001</p>		
<p>ISSUED</p>	<p>SHEET 2 CONT. ON -</p>		