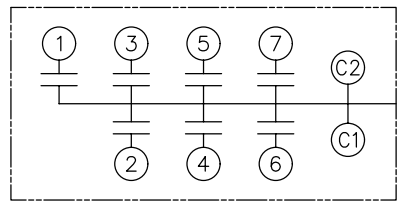
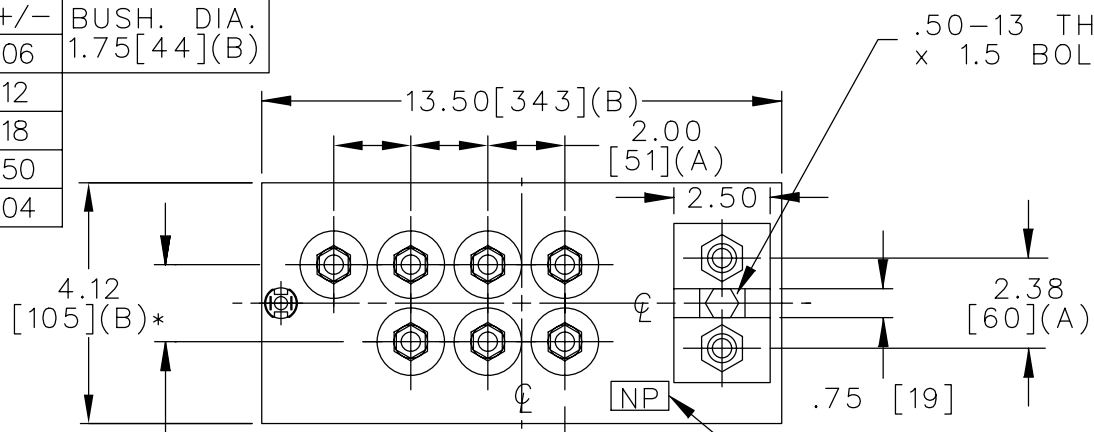
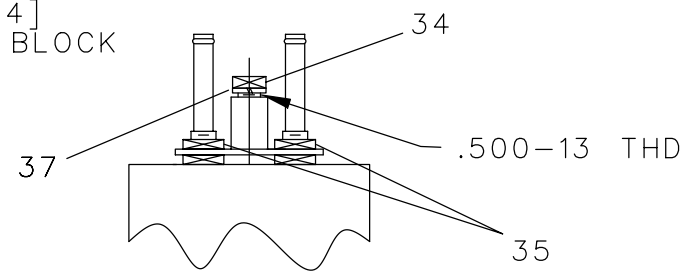
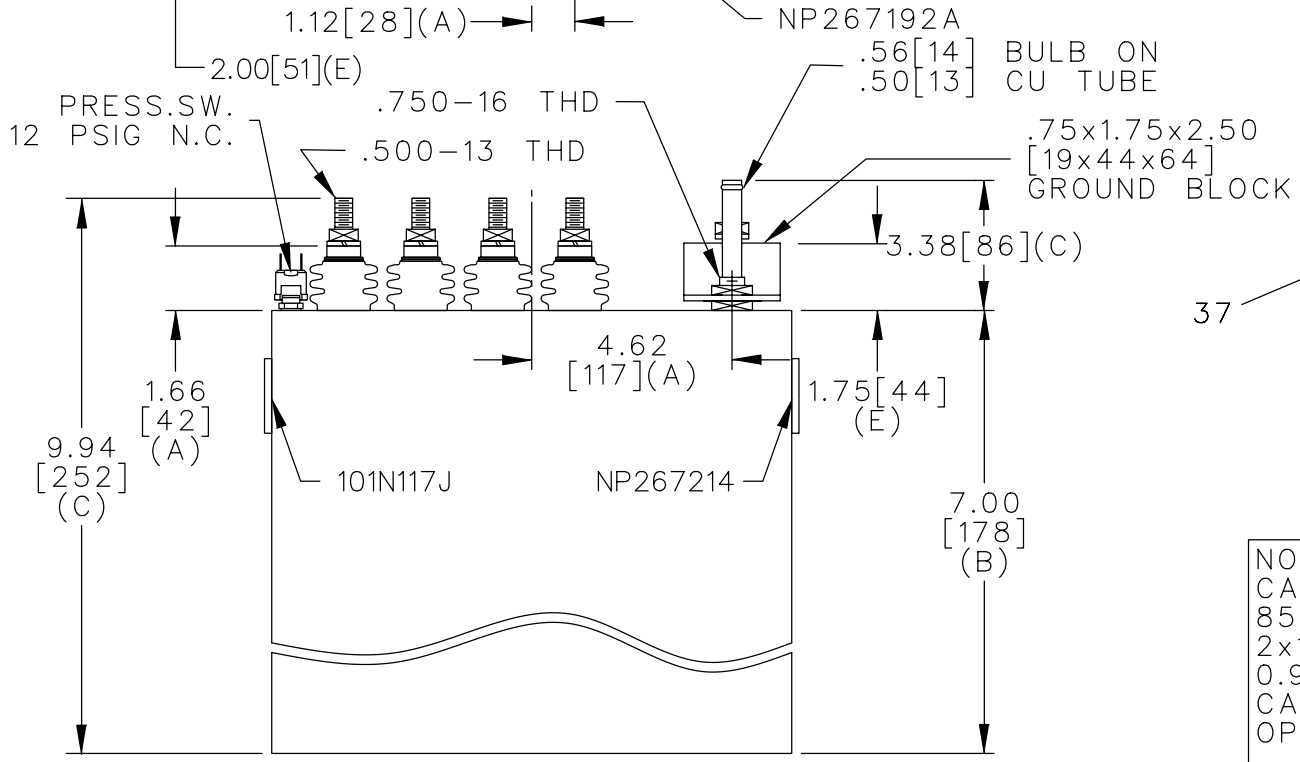


TOL	+/-	BUSH. DIA.
A	.06	1.75[44](B)
B	.12	
C	.18	
D	.50	
E	.04	



TERM	uF	kVAR
1	1.75	35.63
2	1.75	35.63
3	3.5	71.25
4	7.0	142.50
5	7.0	142.50
6	10.5	213.75
7	10.5	213.75



NO INTERNAL DISCH RESISTORS  
 CAT. 19L0083WH2 SN  
 855KVAR 600V 9000HZ 1PH  
 2x1.75+3.5+2x7+2x10.5 UF/TAP  
 0.9 GALS. COMBUSTIBLE LIQUID  
 CAUTION! BEFORE INSTALLING OR  
 OPERATING READ GEH-2733  
 NP267214

\* UP TO +.50[13]  
 CASE BULGE

MAX. TERMINAL  
 TIGHTENING TORQUE  
 15 FT-LBS

NP267192A

	CAPACITOR & POWER PROTECTION FORT EDWARD, N.Y., U.S.A.	
	DRAWN TMO	MAR 4, 1997
	ISSUED	3-5-97

SIZE <b>A</b>
SCALE

<b>OUTLINE</b> <b>19L0083WH2</b>	
SHEET 2	CONT. ON -

DISTR TO