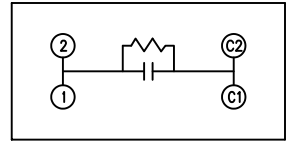
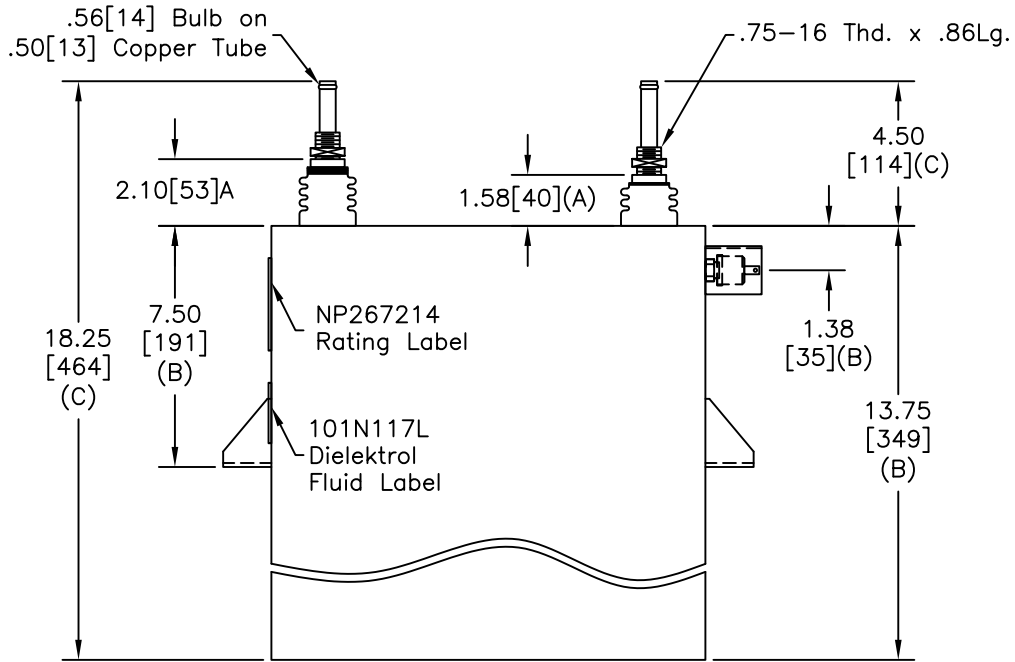
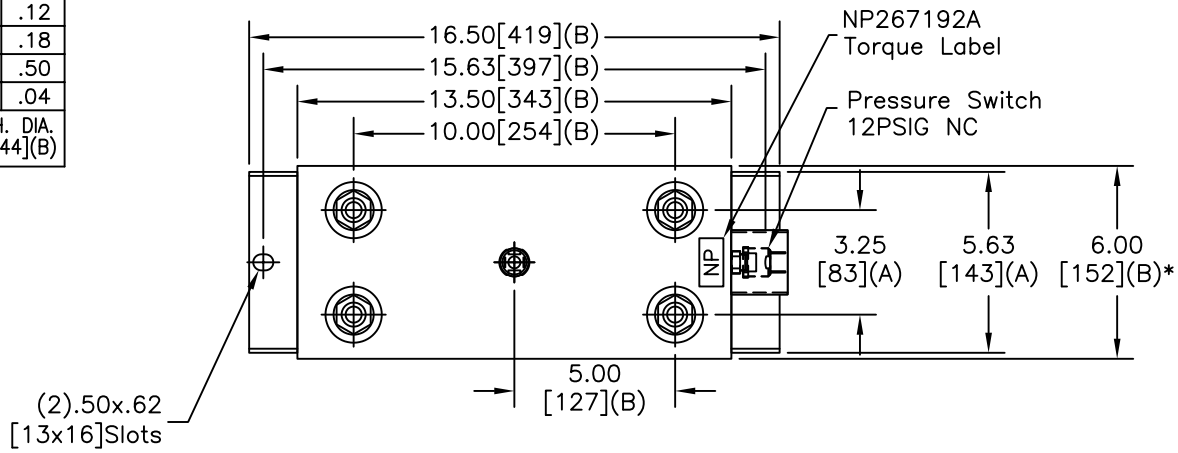


SIZE A	DWG NO 19L0095WH4	SHT 2	REV 2
REV 2	DESCRIPTION Correct NP	DATE 10/24/2012	APPROVED BTR

TOL	+/-
A	.06
B	.12
C	.18
D	.50
E	.04
BUSH. DIA.	1.75[44](B)



SCHEMATIC DIAGRAM - 107

GE CAPACITOR
WITH INTERNAL DISCHARGE RESISTORS
CAT. 19L0095WH4 SN
2200KVAR 1100V 1000HZ 1PH
289.4 UF
1.9 GAL. COMBUSTIBLE LIQUID
CAUTION! BEFORE INSTALLING OR
OPERATING READ GEH-2733
MADE IN USA NP267214

* UP TO +.50[13] CASE BULGE

MAX. TERMINAL TIGHTENING TORQUE 15 FT-LBS.

GE ENERGY FORT EDWARD, N.Y., U.S.A.		SIZE A	Est Weight 71 lbs.
DRAWN E. McGinn	DATE 3/4/1998	SCALE	
ISSUED	DATE 3/11/1998	WC1	

OUTLINE 19L0095WH4	
SHEET 2	CONT ON 3

DISTR. TO