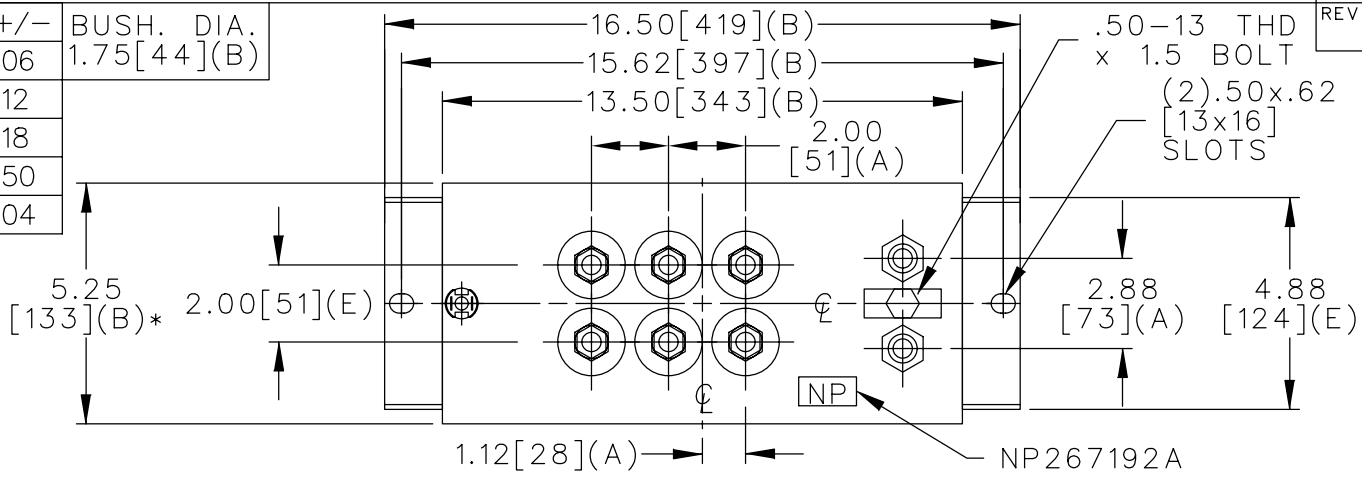
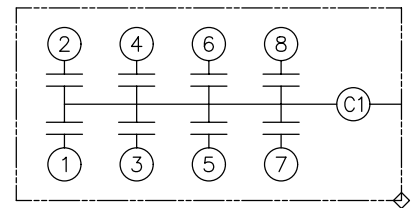


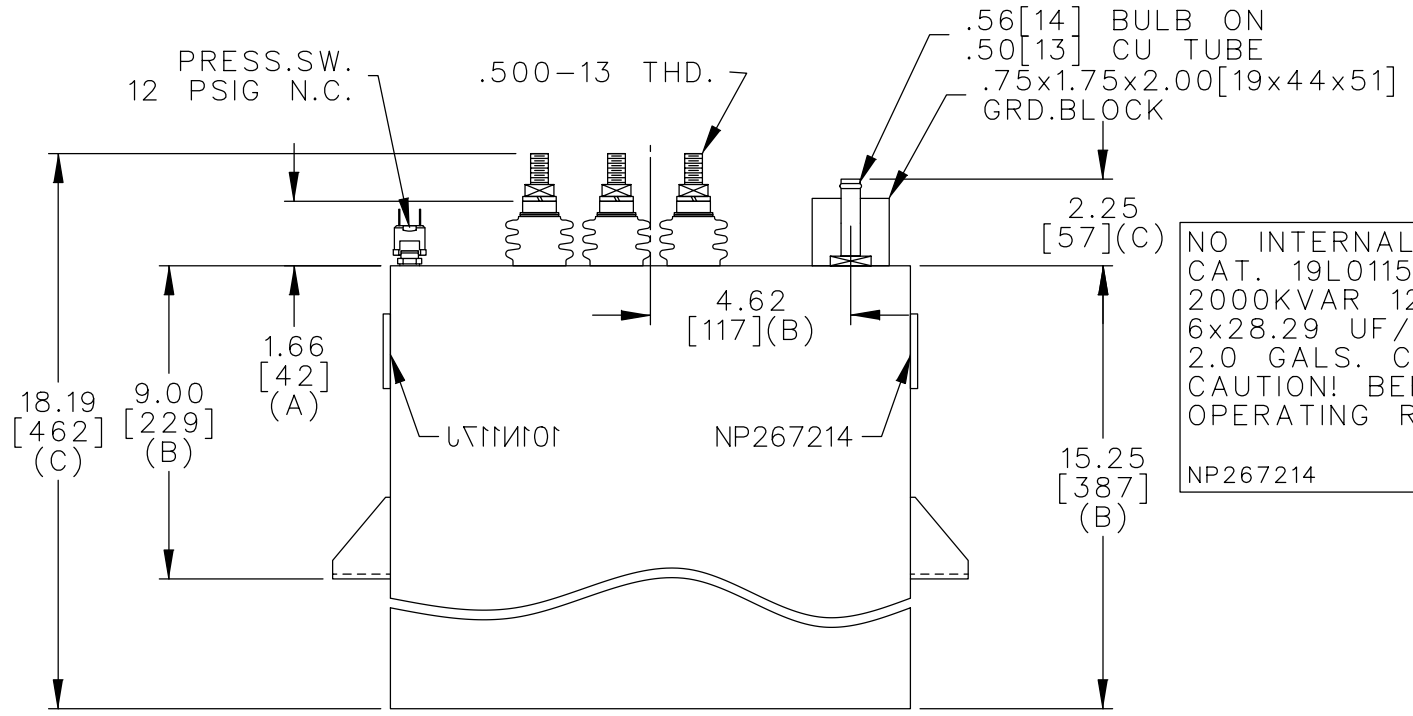
TOL	+/-	BUSH. DIA.
A	.06	1.75[44](B)
B	.12	
C	.18	
D	.50	
E	.04	



TERM	uF	kVAR
1	28.29	333.3
2	28.29	333.3
3	28.29	333.3
4	28.29	333.3
5	28.29	333.3
6	28.29	333.3



SCHEMATIC DIAGRAM - 806



NO INTERNAL DISCH RESISTORS
 CAT. 19L0115WH4 SN
 2000KVAR 1250V 1200HZ 1PH
 6x28.29 UF/TAP
 2.0 GALS. COMBUSTIBLE LIQUID
 CAUTION! BEFORE INSTALLING OR
 OPERATING READ GEH-2733
 NP267214

* UP TO +.50[13] CASE BULGE

MAX. TERMINAL TIGHTENING TORQUE 15 FT-LBS

NP267192A

	CAPACITOR & POWER PROTECTION FORT EDWARD, N.Y., U.S.A.		SIZE A	OUTLINE 19L0115WH4	SHEET 2 CONT. ON -
	DRAWN E.McGINN	DEC. 20, 1996	SCALE		
ISSUED				DISTR TO	