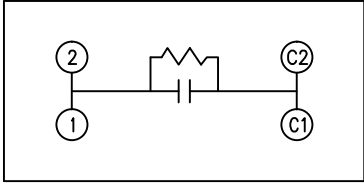
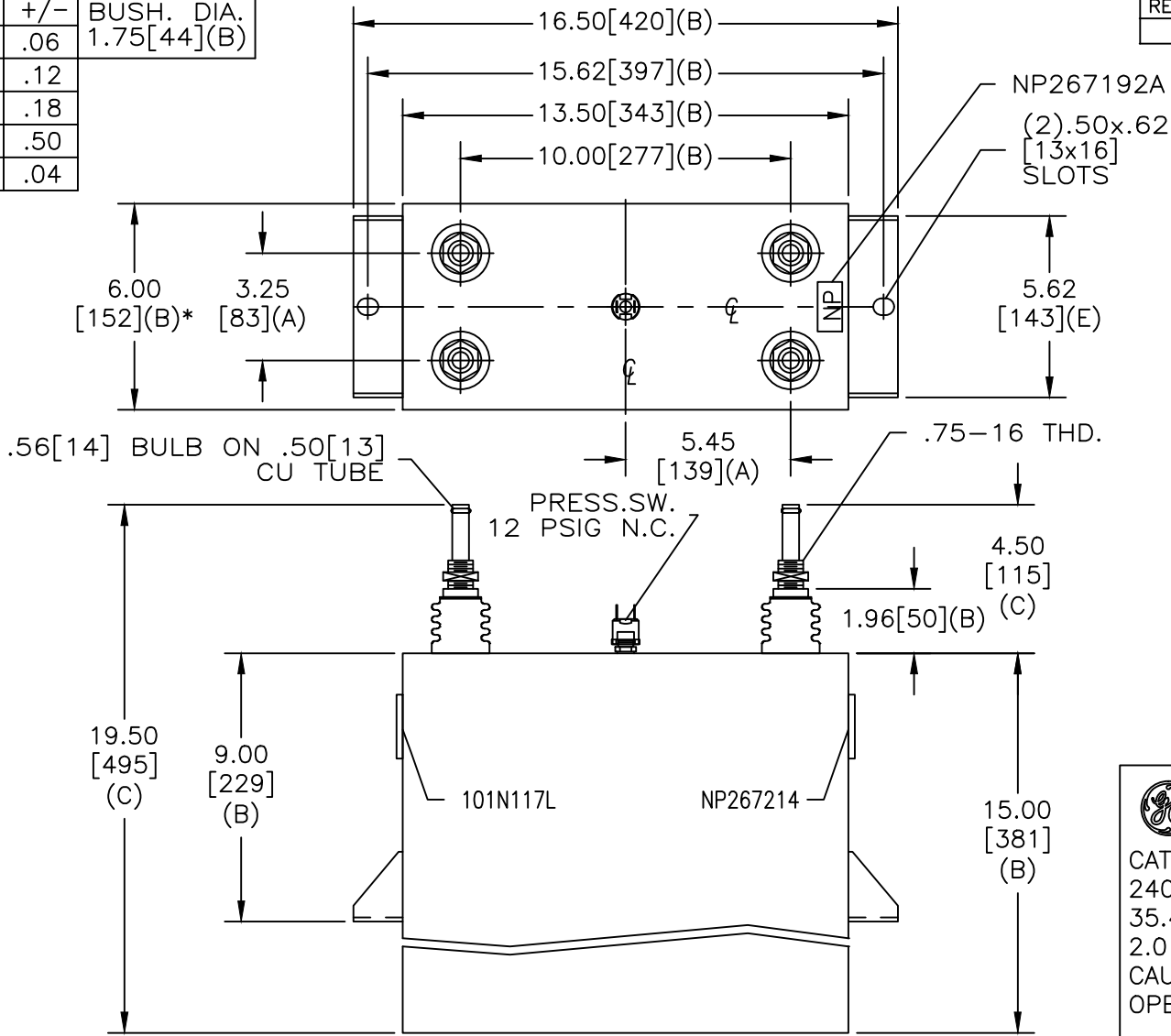


SIZE A	DWG NO 19L0122WH4	SHT 2	REV
REV	DESCRIPTION	DATE	APPROVED

TOL	+/-	BUSH. DIA.
A	.06	1.75[44](B)
B	.12	
C	.18	
D	.50	
E	.04	



SCHEMATIC DIAGRAM - 107

GE CAPACITOR
WITH INTERNAL DISCHARGE RESISTORS
CAT. 19L0122WH4 SN
2400KVAR 3000V 1200HZ 1PH
35.4 UF
2.0 GAL. COMBUSTIBLE LIQUID
CAUTION! BEFORE INSTALLING OR
OPERATING READ GEH-2733
MADE IN U.S.A. NP267214

* UP TO +.50[13]
CASE BULGE

MAX. TERMINAL
TIGHTENING TORQUE
15 FT-LBS

NP267192A

GE ENERGY FORT EDWARD, N.Y., U.S.A.		SIZE A
DRAWN JBCozzens	DATE 2/12/2014	SCALE
ISSUED	DATE 2/12/2014	

OUTLINE
19L0122WH4

SHEET 2 CONT ON 3

DISTR. TO