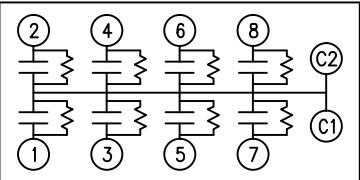
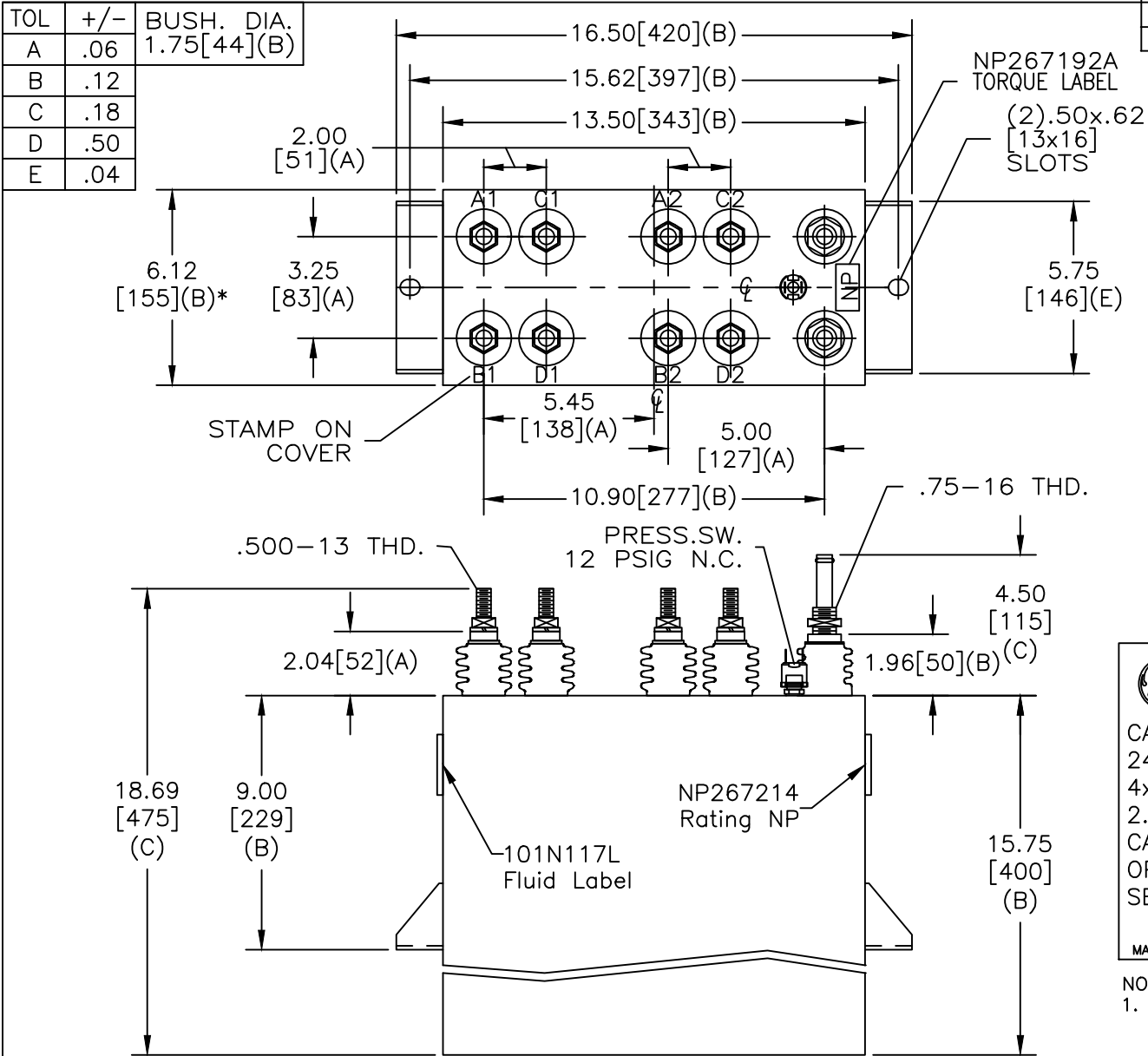


SIZE A	DWG NO 19L0123WH4	SHT 2	REV
REV	DESCRIPTION	DATE	APPROVED

TOL	+/-	BUSH. DIA.
A	.06	1.75[44](B)
B	.12	
C	.18	
D	.50	
E	.04	

TERM	VOLT	KVAR	UF
A1-A2	3000	600	8.84
B1-B2	3000	600	8.84
C1-C2	3000	600	8.84
D1-D2	3000	600	8.84



SCHEMATIC DIAGRAM - 802

CAPACITOR
WITH INTERNAL DISCHARGE RESISTORS

CAT.19L0123WH4 SN
2400KVAR 3000V 1200HZ 1PH
4x8.84 UF/TAP
2.1 GAL. COMBUSTIBLE LIQUID
CAUTION! BEFORE INSTALLING OR
OPERATING READ GEH-2733
SEE UNIT OUTLINE FOR CONNECTIONS

MADE IN U.S.A. NP267214

- NOTES:
- Maximum terminal tightening torque
.50-13 thd. 15 ft-lbs. 20.3 N-m
.75-16 thd. 25 ft-lbs. 33.9 N-m
 - Minimum water flow 1 GPM (3.8 l/m)

* UP TO +.50[13] CASE BULGE

MAX. TERMINAL TIGHTENING TORQUE 15 FT-LBS

NP267192A

GE ENERGY FORT EDWARD, N.Y., U.S.A.		SIZE A
DRAWN HBO	DATE 4/8/15	SCALE
ISSUED	DATE 4/8/15	

OUTLINE
19L0123WH4

SHEET 2 CONT ON -

DISTR. TO