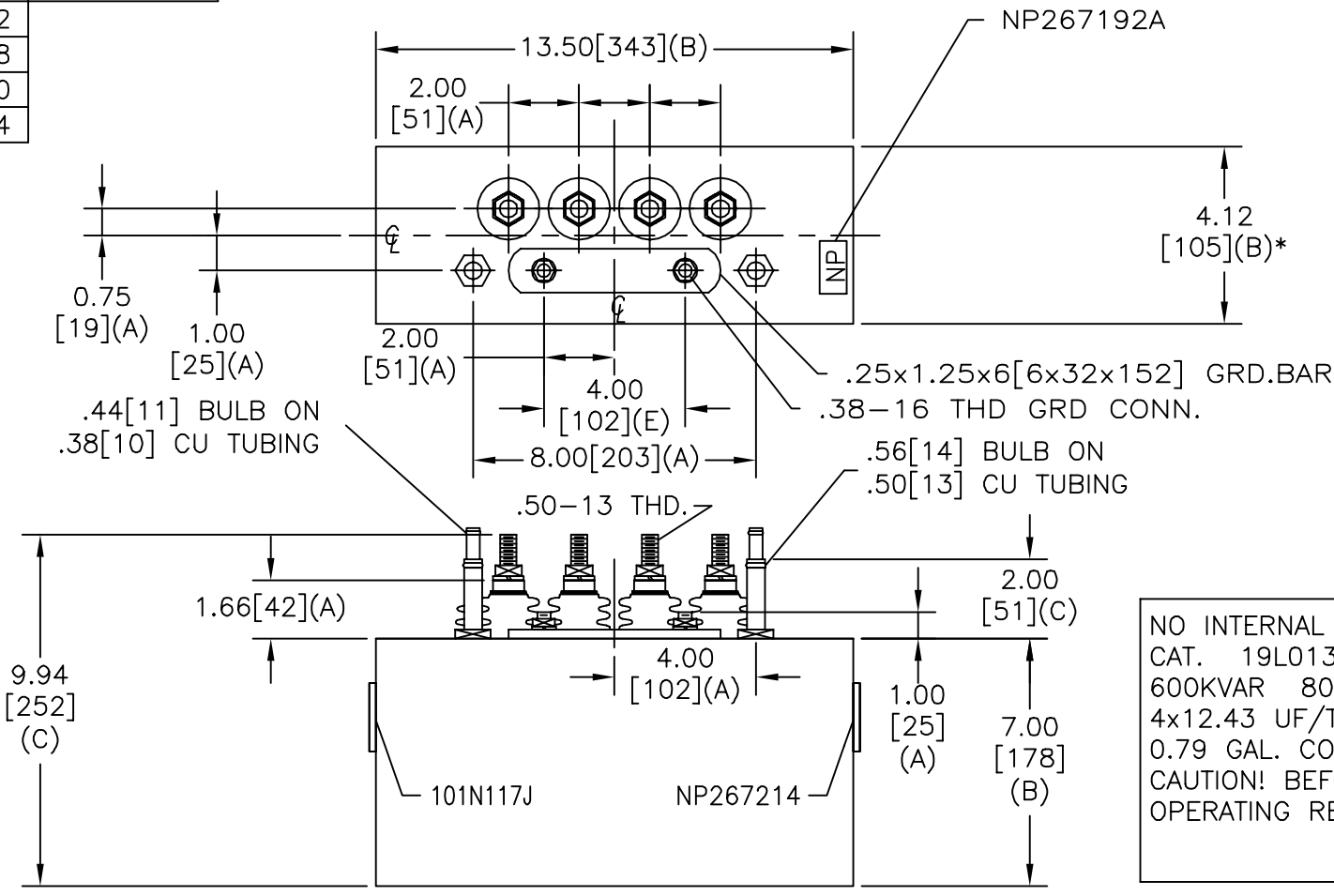
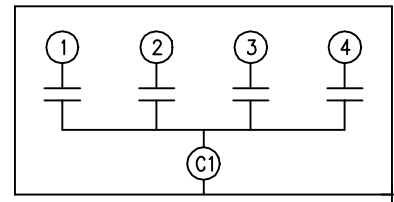


SIZE A	DWG NO 19L0130WH1	SHT 2	REV 2
REV 2	DESCRIPTION UPDATE CAT NO	DATE 7/9/03	APPROVED BTR

TOL	+/-	BUSH. DIA. 1.75[44](B)
A	.06	
B	.12	
C	.18	
D	.50	
E	.04	



TERM	uF	kVAR
1	12.43	150
2	12.43	150
3	12.43	150
4	12.43	150



SCHEMATIC DIAGRAM - 416

NO INTERNAL DISCH RESISTORS  
 CAT. 19L0130WH1 SN  
 600KVAR 800V 3000HZ 1PH  
 4x12.43 UF/TAP  
 0.79 GAL. COMBUSTIBLE LIQUID  
 CAUTION! BEFORE INSTALLING OR  
 OPERATING READ GEH-2733

NP267214

\* UP TO +.50 [13]  
 CASE BULGE

MAX. TERMINAL  
 TIGHTENING TORQUE  
 15 FT-LBS

NP267192A

<b>INDUSTRIAL SYSTEMS</b> FORT EDWARD, N.Y., U.S.A.		SIZE A
DRAWN E. McGinn	DATE DEC 12, 1996	SCALE
ISSUED	DATE 12/18/96	

**OUTLINE**  
**19L0130WH1**

SHEET 2 CONT ON -

DISTR. TO