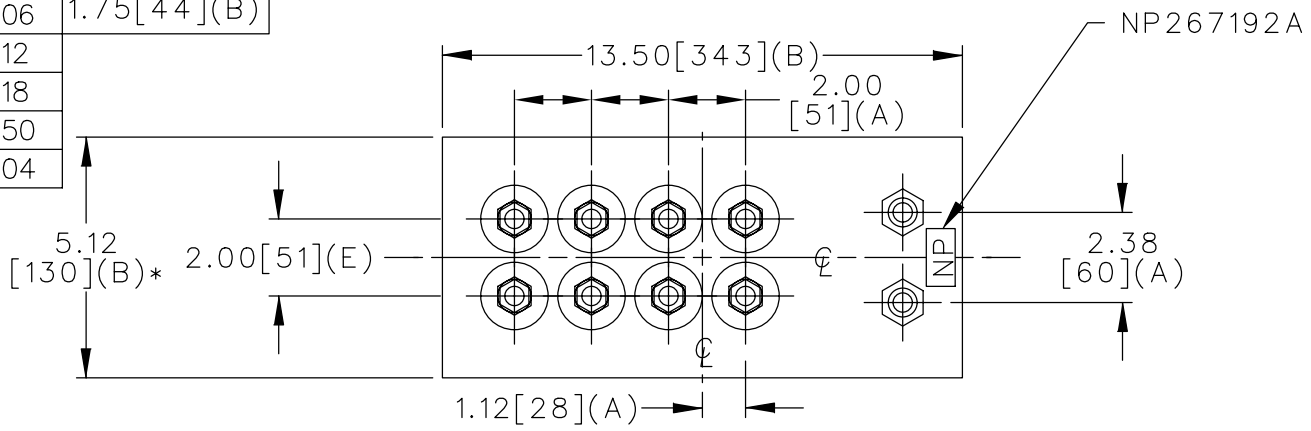
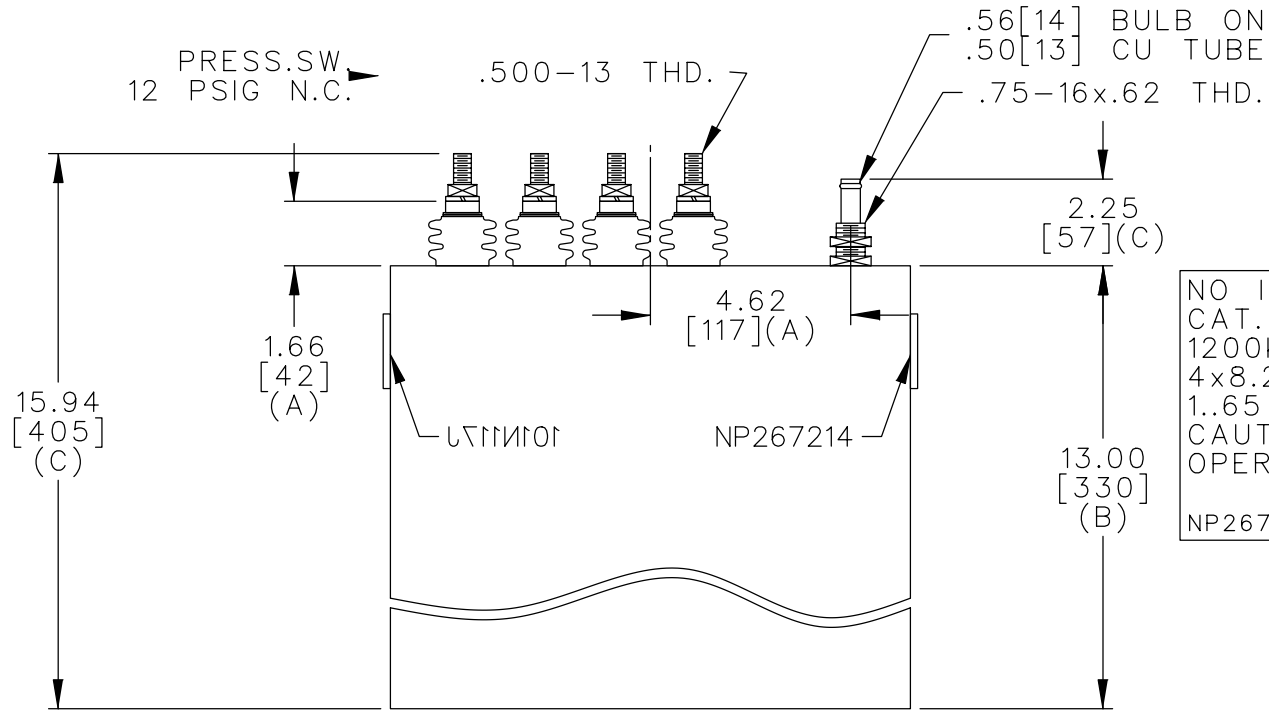
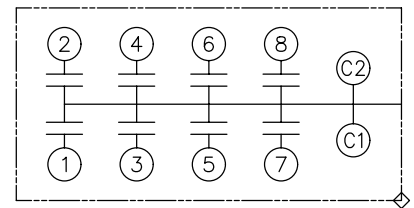


| | | |
|-----|-----|-------------|
| TOL | +/- | BUSH. DIA. |
| A | .06 | 1.75[44](B) |
| B | .12 | |
| C | .18 | |
| D | .50 | |
| E | .04 | |



| TERM | uF | kVAR |
|------|-------|------|
| 1 | 8.29 | 100 |
| 2 | 8.29 | 100 |
| 3 | 8.29 | 100 |
| 4 | 8.29 | 100 |
| 5 | 16.58 | 200 |
| 6 | 16.58 | 200 |
| 7 | 16.58 | 200 |
| 8 | 16.58 | 200 |



NO INTERNAL DISCH RESISTORS
 CAT. 19L0140WH1 SN
 1200KVAR 800V 3000HZ 1PH
 4x8.29+4x16.58 UF/TAP
 1.65 GAL. COMBUSTIBLE LIQUID
 CAUTION! BEFORE INSTALLING OR
 OPERATING READ GEH-2733
 NP267214

* UP TO +.50[13]
 CASE BULGE

MAX. TERMINAL
 TIGHTENING TORQUE
 15 FT-LBS

NP267192A

| | | | | | |
|--------|---|---------------|------------------|-----------------------|--------------------|
| | CAPACITOR & POWER PROTECTION FORT EDWARD, N.Y., U.S.A. | | SIZE A | OUTLINE 19L0140WH1 | SHEET 2 CONT. ON - |
| | DRAWN E.McGINN | JUNE 17, 1997 | | | |
| ISSUED | 6-18-97 | DISTR TO | | | |