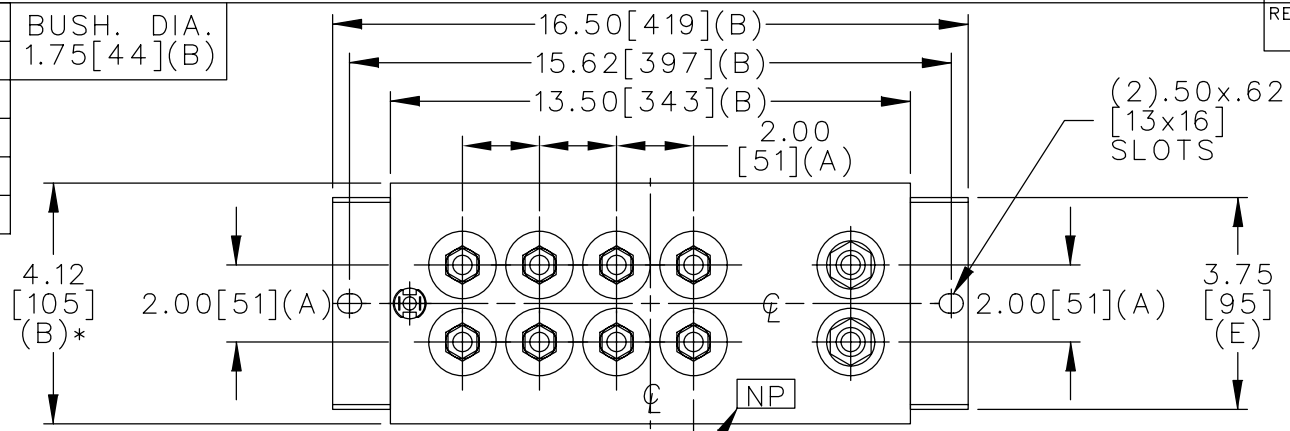
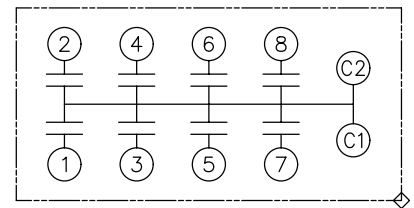


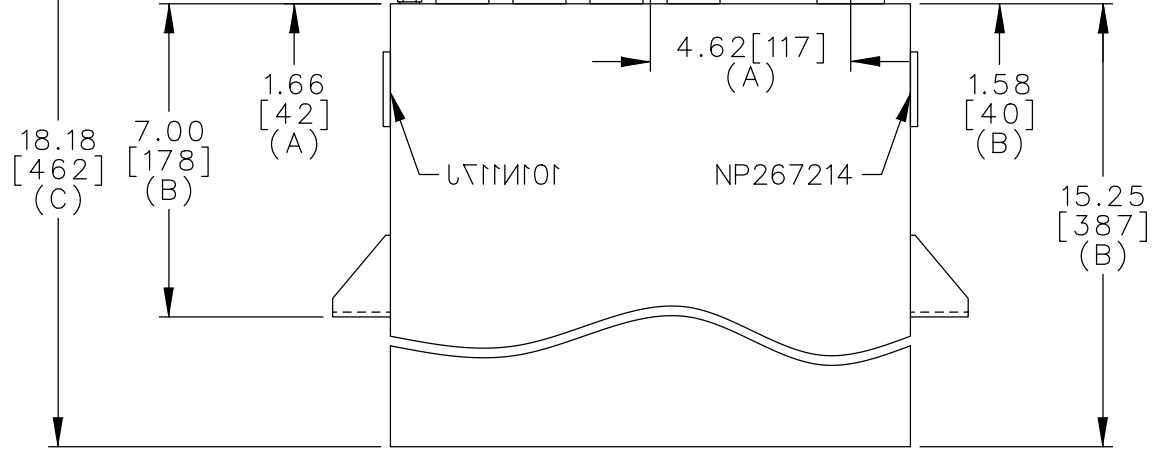
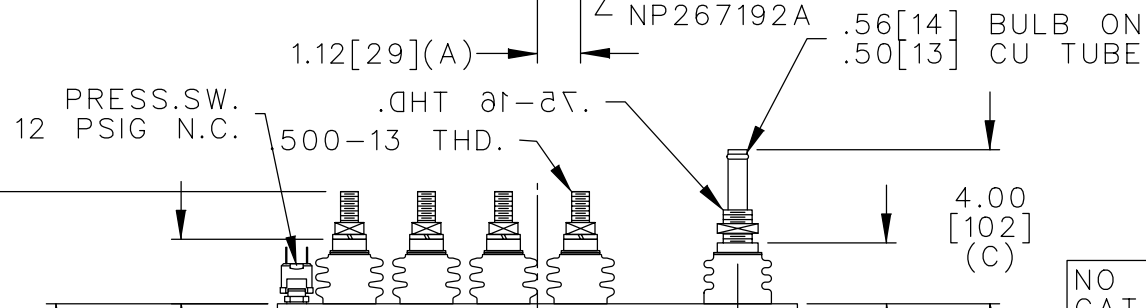
TOL	+/-	BUSH. DIA.
A	.06	1.75[44](B)
B	.12	
C	.18	
D	.50	
E	.04	



TERM	uF	kVAR
1	8.03	387.5
2	8.03	387.5
3	8.03	387.5
4	8.03	387.5
5	8.03	387.5
6	8.03	387.5
7	8.03	387.5
8	8.03	387.5



SCHEMATIC DIAGRAM - 800



NO INTERNAL DISCH RESISTORS
 CAT. 19L0148WH4 SN
 3100KVAR 1600V 3.0KHZ
 8 x 8.03 UF/TAP
 1.7 GALS COMBUSTIBLE LIQUID
 CAUTION! BEFORE INSTALLING OR
 OPERATING READ GEH-2733
 NP267214

* UP TO +.50[13]
CASE BULGE

MAX. TERMINAL
TIGHTENING TORQUE
15 FT-LBS

NP267192A

	CAPACITOR & POWER PROTECTION FORT EDWARD, N.Y., U.S.A.		SIZE A	OUTLINE 19L0148WH4	SHEET 2 CONT. ON -
	DRAWN E.McGINN	DEC. 17, 1997	SCALE		
ISSUED					