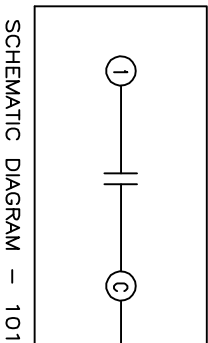
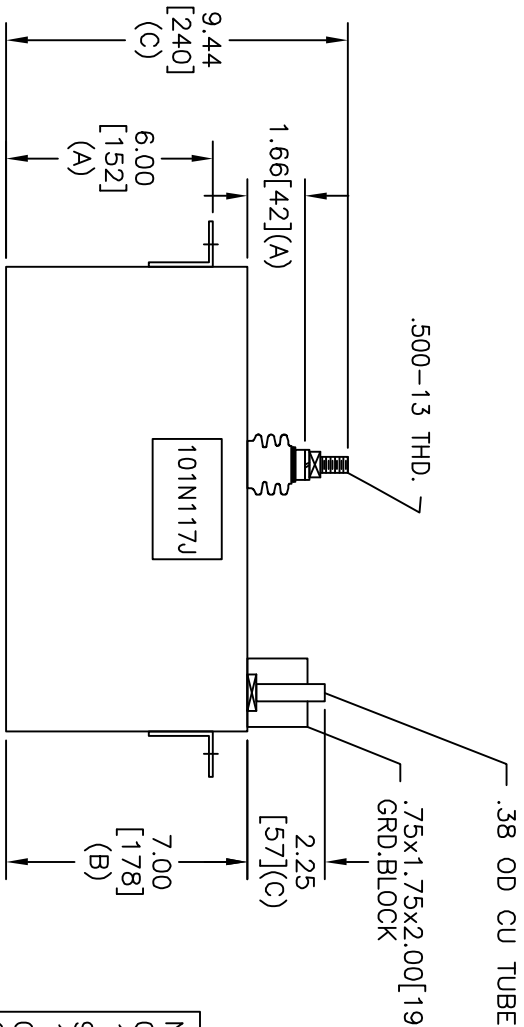
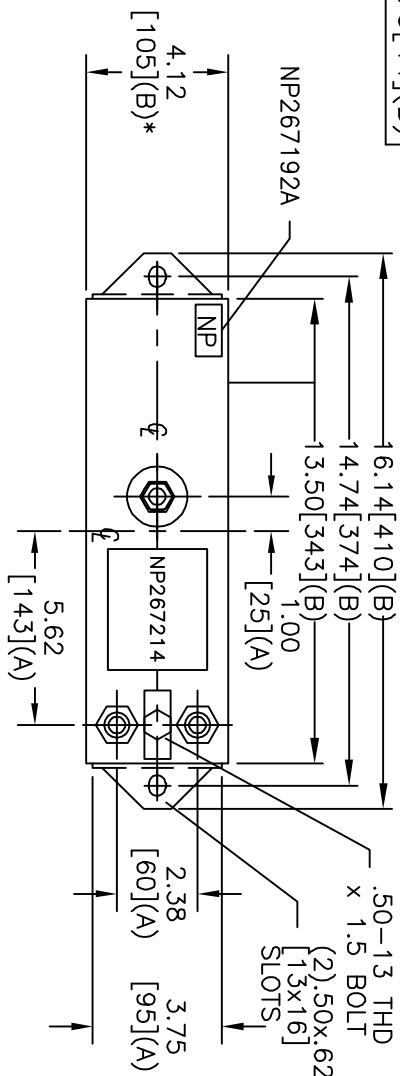


TOL	+/-	BUSH. DIA.
A	.06	1.75[44](B)
B	.12	
C	.18	
D	.50	
E	.04	



SCHEMATIC DIAGRAM - 101

NO INTERNAL DISCH RESISTORS
 CAT. 19L0163WH3 SN
 170KVAR 540V 10KHZ 1PH
 9.28 UF
 1.3 GAL. COMBUSTIBLE LIQUID
 CAUTION! BEFORE INSTALLING OR
 OPERATING READ GEH-2733

NP267214

* UP TO +.50[13]
 CASE BULGE

MAX. TERMINAL
 TIGHTENING TORQUE
 15 FT-LBS

NP267192A

SIZE	DWG NO	SHT	REV
1A	19L0163WH3	2	3
REV	DESCRIPTION	DATE	APPROVED
3	ADD TUBE DIM MOVE NP	8/23/06	BTR



GE ENERGY
 FORT EDWARD, N.Y., U.S.A.

DRAWN

E. McGinn

DATE

11/4/1997

ISSUED

DATE

11/5/1997

SIZE

A

SCALE

OUTLINE

19L0163WH3

SHEET

2

CONT

ON

-

DISTR. TO