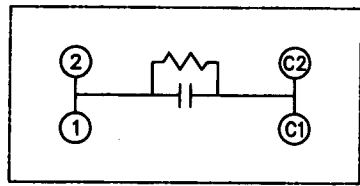
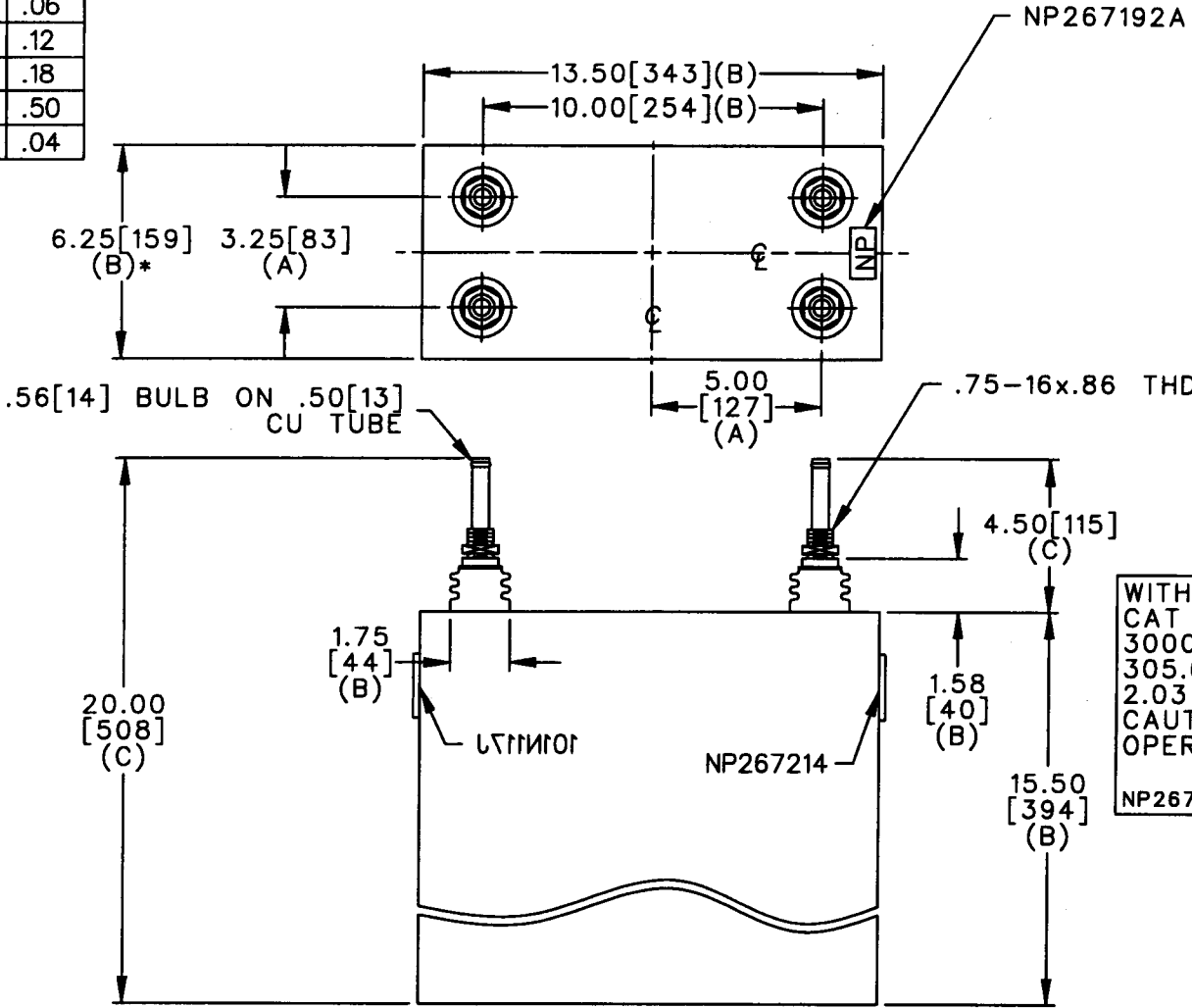


SIZE <b>A</b>	DWG NO. 19L 172WH1	SH	REV
REV 0		DATE NEW 05/26/99	

TOL	+/-
A	.06
B	.12
C	.18
D	.50
E	.04



SCHEMATIC DIAGRAM - 107

WITH INTERNAL DISCH RESISTORS  
 CAT 19L 172WH1 SN  
 3000KVAR 1250V 1000HZ 1PH  
 305.6 UF/TAP  
 2.03 GAL COMBUSTIBLE LIQUID  
 CAUTION! BEFORE INSTALLING OR  
 OPERATING READ GEH-2733  
 NP267214

\* UP TO +.50[13]  
 CASE BULGE

MAX. TERMINAL  
 TIGHTENING TORQUE  
 15 FT-LBS

NP267192A

	CAPACITOR & POWER PROTECTION FORT EDWARD, N.Y., U.S.A.		SIZE <b>A</b>	UNIT WEIGHT 65 / 30 LB/KG	<b>OUTLINE</b> <b>19L 172WH1</b>	SHEET 2 CONT. 3	DISTR TO
	DRAWN 05/26/99 LRD 05/26/99	ISSUED 6-2-99	SCALE WC1 version				