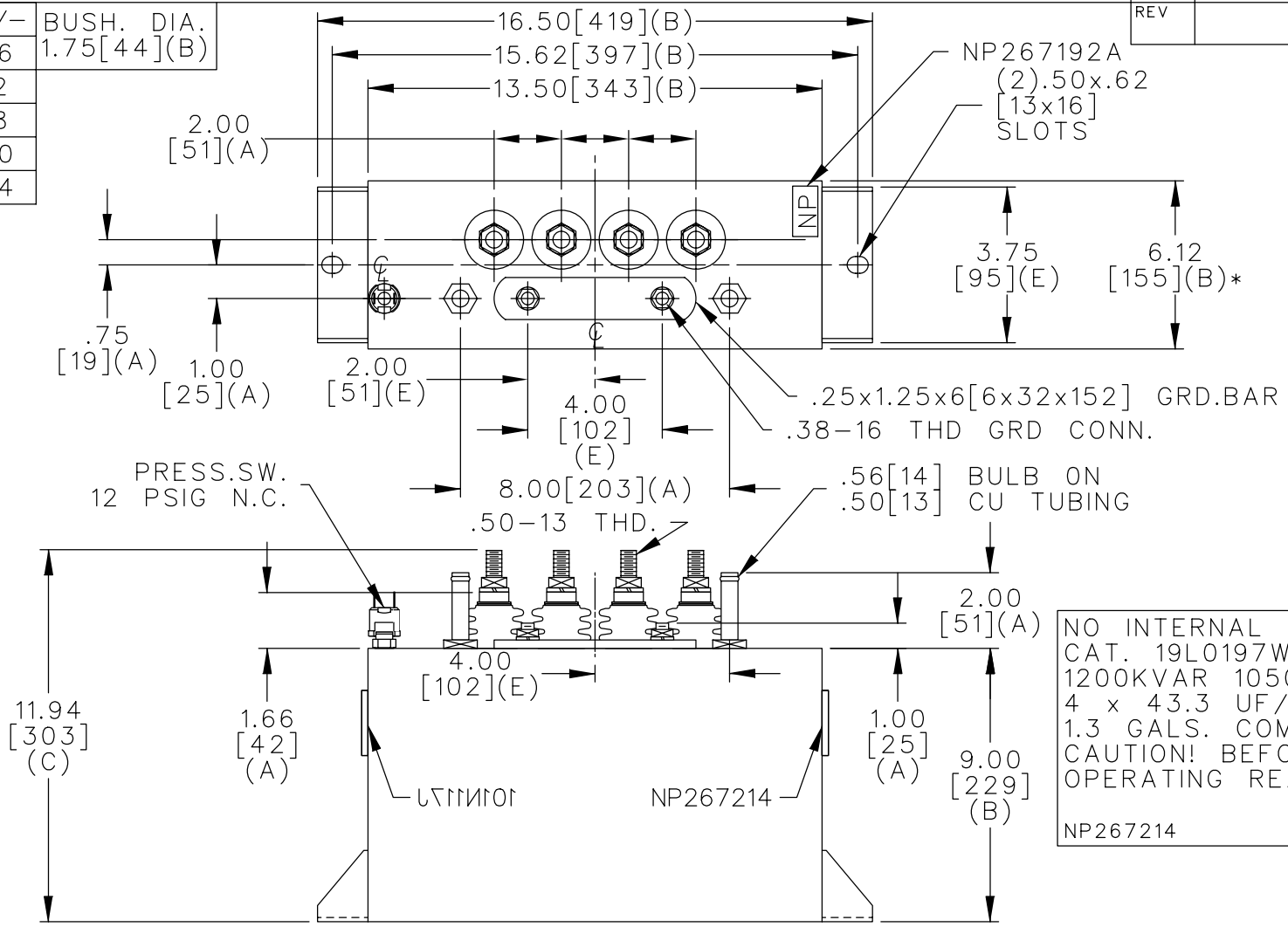
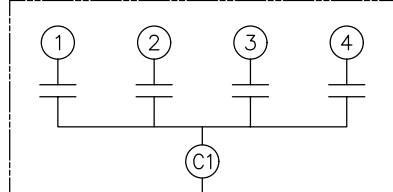


TOL	+/-	BUSH. DIA.
A	.06	1.75[44](B)
B	.12	
C	.18	
D	.50	
E	.04	



TERM	uF	kVAR
1	43.3	300
2	43.3	300
3	43.3	300
4	43.3	300



SCHEMATIC DIAGRAM - 416

NO INTERNAL DISCH RESISTORS  
 CAT. 19L0197WH4 SN  
 1200KVAR 1050V 1000HZ 1PH  
 4 x 43.3 UF/TAP  
 1.3 GALS. COMBUSTIBLE LIQUID  
 CAUTION! BEFORE INSTALLING OR  
 OPERATING READ GEH-2733  
 NP267214

\* UP TO +.50[13]  
 CASE BULGE

MAX. TERMINAL  
 TIGHTENING TORQUE  
 15 FT-LBS

NP267192A

	CAPACITOR & POWER PROTECTION FORT EDWARD, N.Y., U.S.A.		SIZE <b>A</b>	<b>OUTLINE</b> <b>19L0197WH4</b>	
	DRAWN E.McGINN	JAN. 10, 2002	SCALE		
ISSUED	SHEET 2 CONT. ON		DISTR TO		