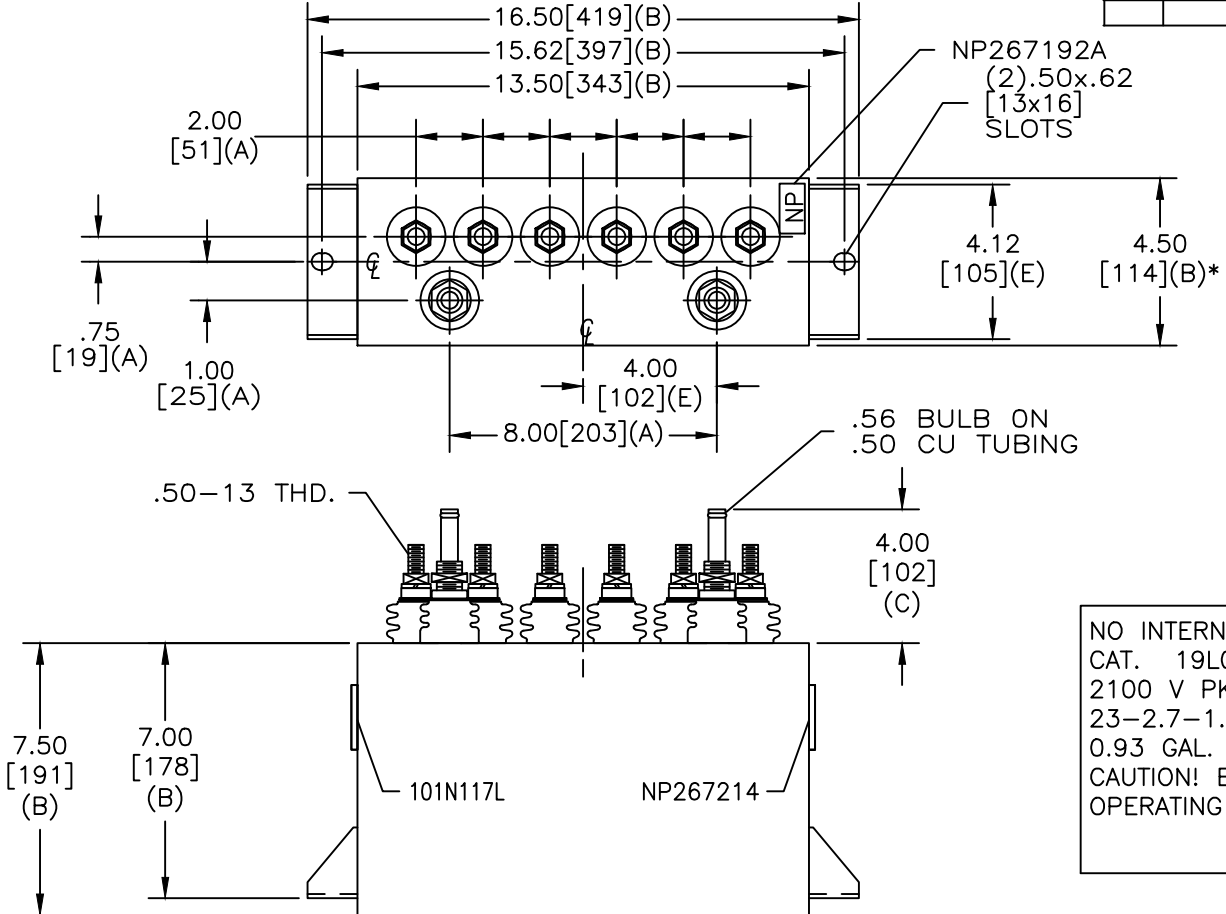
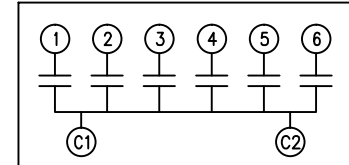


SIZE A	DWG NO 19L0198WH3	SHT 2	REV
REV	DESCRIPTION	DATE	APPROVED
			DMR



TERM	uF
1	23.2
2	2.72
3	1.36
4	23.2
5	2.72
6	1.36



SCHEMATIC DIAGRAM - 600

NO INTERNAL DISCH RESISTORS
 CAT. 19L0198WH3 SN
 2100 V PK-PK 825 ARMS
 23-2.7-1.4-23-2.7-1.4 UF/TAP
 0.93 GAL. COMBUSTIBLE LIQUID
 CAUTION! BEFORE INSTALLING OR
 OPERATING READ GEH-2733

NP267214

* UP TO +.50
CASE BULGE

MAX. TERMINAL
TIGHTENING TORQUE
15 FT-LBS

NP267192A

GE ENERGY FORT EDWARD, N.Y., U.S.A.		SIZE A
		SCALE
DRAWN DMR	DATE 1/5/2012	SHEET 2
ISSUED	DATE 1/5/2012	

OUTLINE
19L0198WH3

DISTR. TO