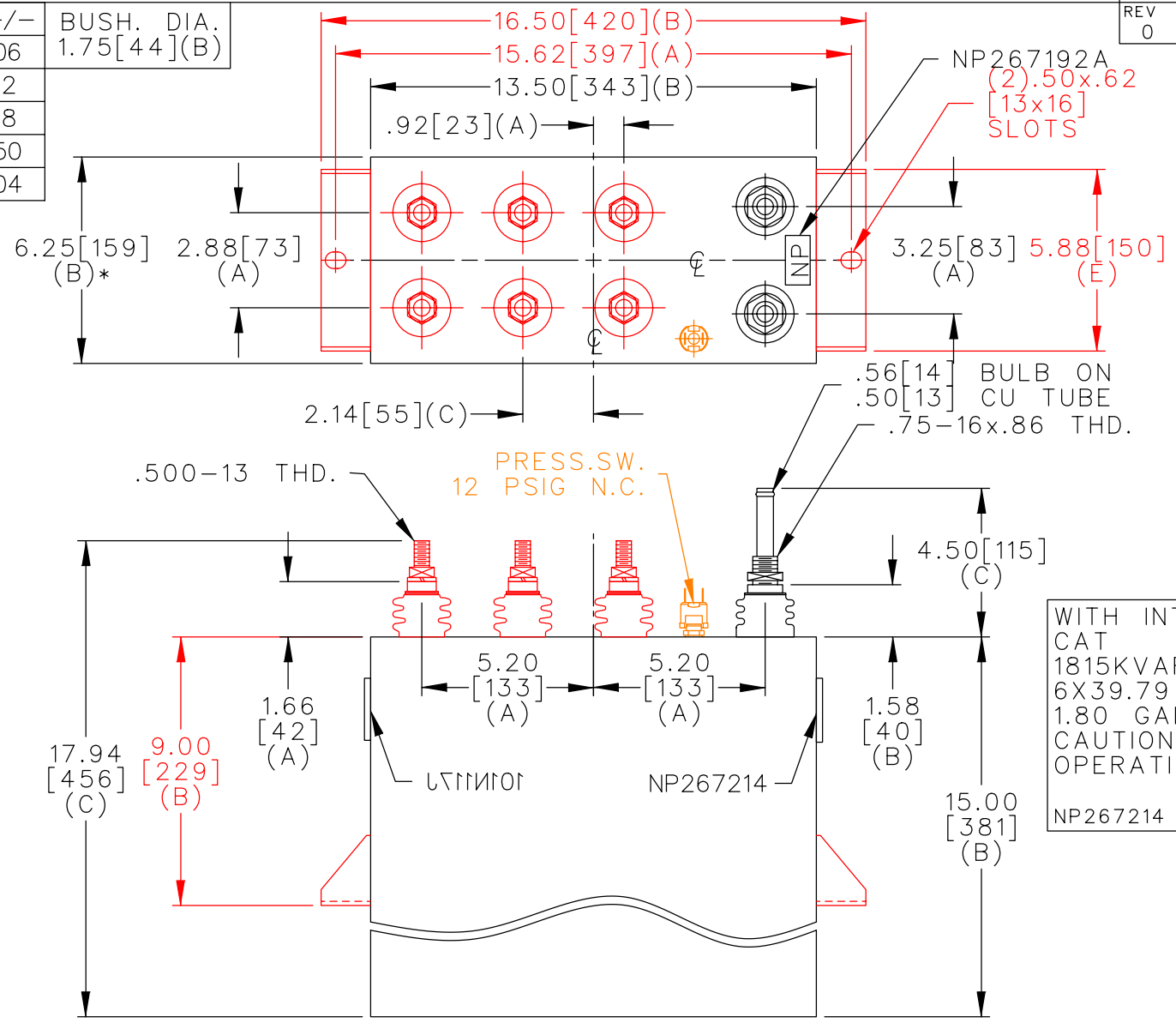
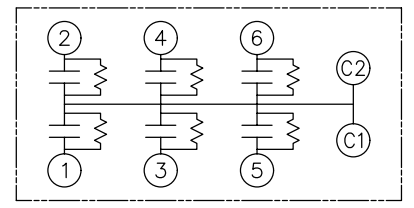


TOL	+/-	BUSH. DIA.
A	.06	1.75[44](B)
B	.12	
C	.18	
D	.50	
E	.04	



TERM	uF	kVAR
1	39.79	302.5
2	39.79	302.5
3	39.79	302.5
4	39.79	302.5
5	39.79	302.5
6	39.79	302.5



SCHEMATIC DIAGRAM - 617

WITH INTERNAL DISCH RESISTORS
 CAT 19L0217WH4 SN
 1815KVAR 1100V 1000HZ 1PH
 6X39.79 UF/TAP
 1.80 GAL COMBUSTIBLE LIQUID
 CAUTION! BEFORE INSTALLING OR
 OPERATING READ GEH-2733
 NP267214

* UP TO +.50[13] CASE BULGE

MAX. TERMINAL TIGHTENING TORQUE 15 FT-LBS

NP267192A

<p>CAPACITOR & POWER PROTECTION FORT EDWARD, N.Y., U.S.A.</p>	SIZE A	UNIT WEIGHT 78 / 35 LB/KG	<h1>OUTLINE</h1> <h2>19L0217WH4</h2>	SHEET 2 CONT. 3
	DRAWN 11/17/99 LRD 11/17/99	SCALE WC6 version		
ISSUED				