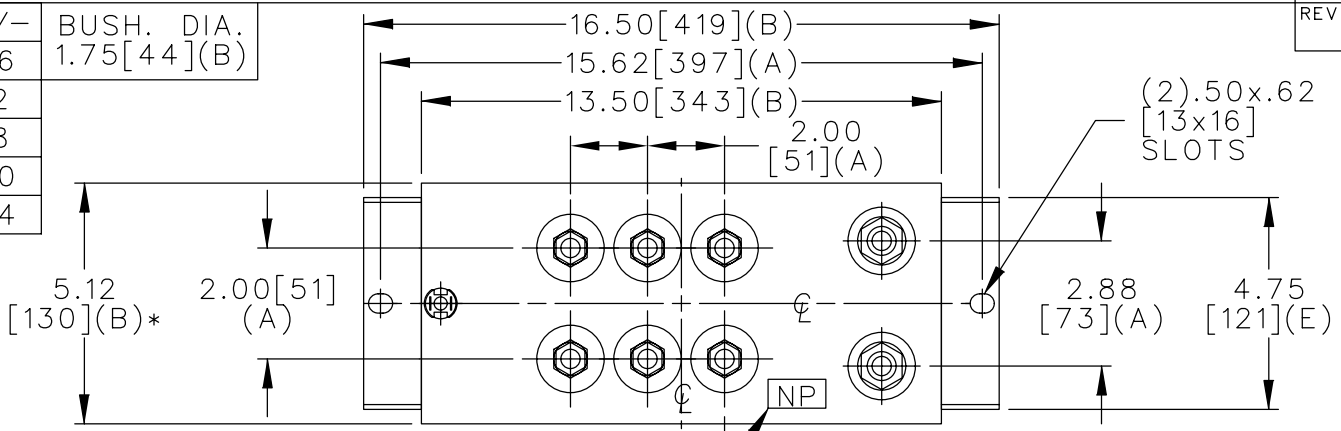
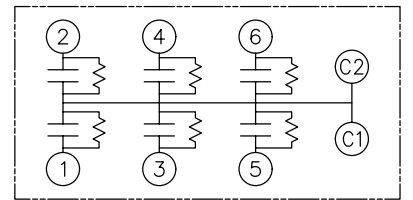


TOL	+/-	BUSH. DIA.
A	.06	1.75[44](B)
B	.12	
C	.18	
D	.50	
E	.04	

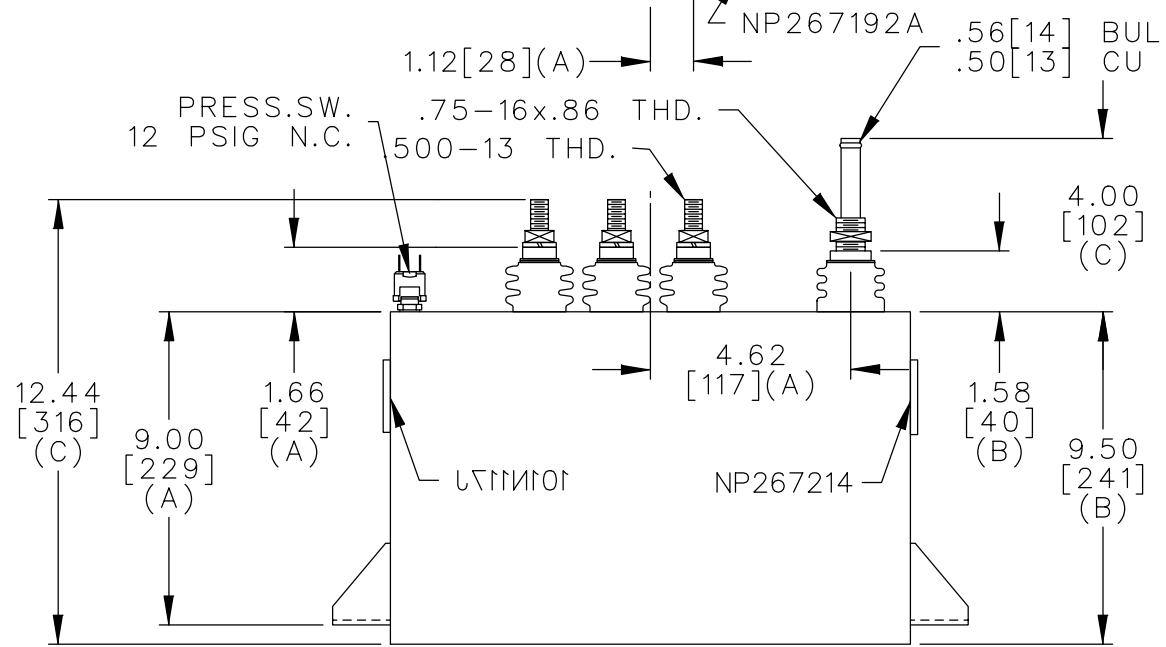


TERM	uF	kVAR
1	4.98	151.33
2	4.98	151.33
3	4.98	151.33
4	4.98	151.33
5	4.98	151.33
6	4.98	151.33



SCHEMATIC DIAGRAM - 617

WITH INTERNAL DISCH RESISTOR
 CAT. 19L0220WH4 SN
 908KVAR 2200V 1000HZ 1PH
 6 x 4.98 UF/TAP
 1.3 GALS. COMBUSTIBLE LIQUID
 CAUTION! BEFORE INSTALLING OR
 OPERATING READ GEH-2733
 NP267214



* UP TO +.50[13] CASE BULGE

MAX. TERMINAL TIGHTENING TORQUE 15 FT-LBS

NP267192A

<p>CAPACITOR & POWER PROTECTION FORT EDWARD, N.Y., U.S.A.</p>	SIZE	<p>A</p>	<p>OUTLINE 19L0220WH4</p>
	DRAWN E.McGINN NOV. 6, 2001 ISSUED		
SHEET 2 CONT. ON -		DISTR TO	