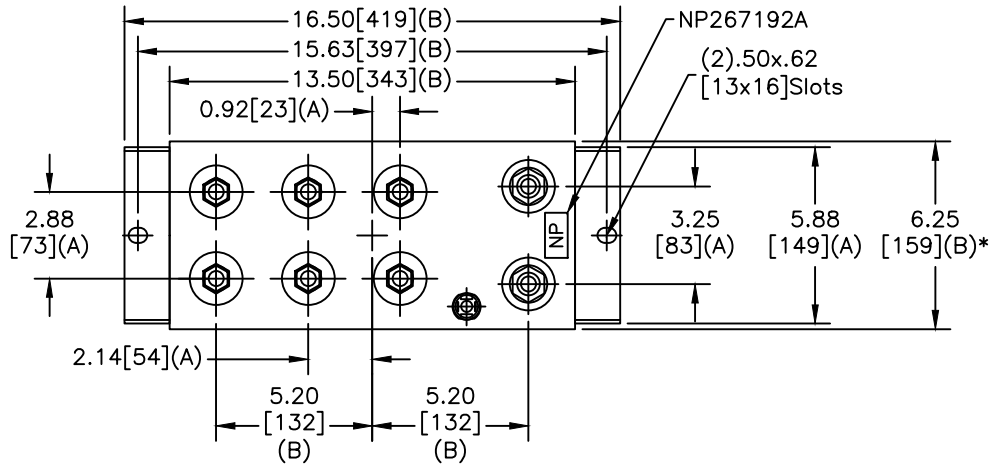
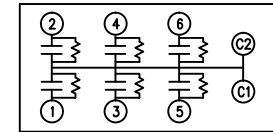


TOL	+/-
A	.06
B	.12
C	.18
D	.50
E	.04
BUSH. DIA.	1.75[44](B)

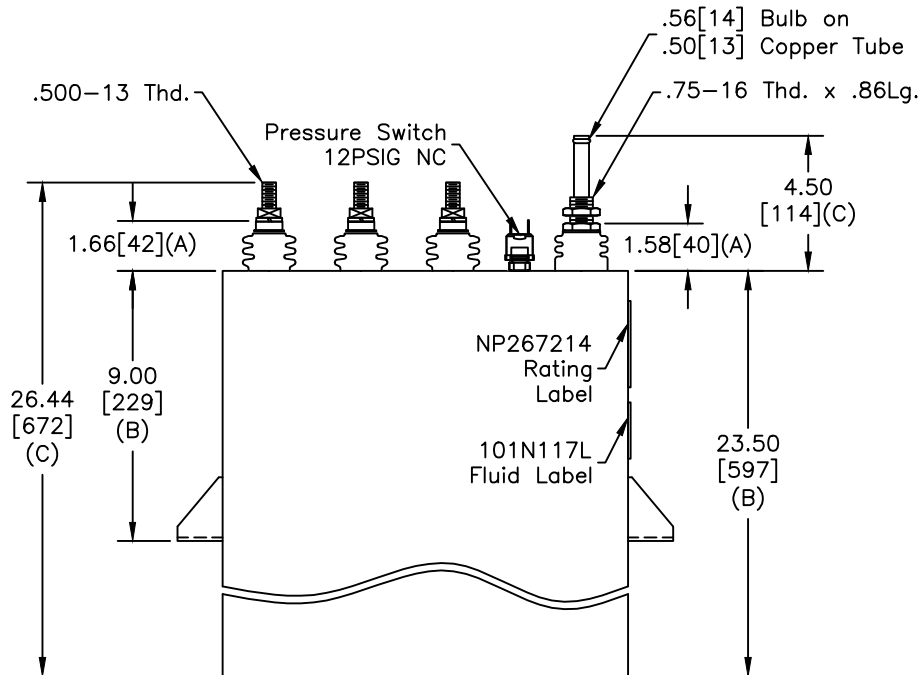
SIZE	DWG NO	SHT	REV
A	19L0224WH4	2	1
REV	DESCRIPTION	DATE	APPROVED
1	CHG FLUID LABEL	12/9/2013	JBC



TERM	uF	kVAR
1	9.947	302.5
2	9.947	302.5
3	9.947	302.5
4	9.947	302.5
5	9.947	302.5
6	9.947	302.5



SCHEMATIC DIAGRAM - 617



**GE CAPACITOR**  
WITH INTERNAL DISCHARGE RESISTORS

CAT. 19L0224WH4 SN  
1815KVAR 2200V 1000HZ 1PH  
6X9.95 UF/TAP  
2.76 GAL. COMBUSTIBLE LIQUID  
CAUTION! BEFORE INSTALLING OR  
OPERATING READ GEH-2733

MADE IN U.S.A. NP267214

NOTES:

- Maximum terminal tightening torque  
.50-13 thd. 15 ft-lbs. 20.3 N-m  
.75-16 thd. 25 ft-lbs. 33.9 N-m
- Minimum water flow 1 GPM (3.8 l/m)

\* UP TO +.50[13] CASE BULGE

MAX. TERMINAL TIGHTENING TORQUE 15 FT-LBS.

NP267192A

	GE ENERGY FORT EDWARD, N.Y., U.S.A.		SIZE	A	Est Weight 101 lbs. 45 kg	OUTLINE 19L0224WH4
	DRAWN	JB Cozzens	DATE			
ISSUED		DATE	7/21/1998	SCALE	WC6	SHEET 2 CONT ON 3

DISTR. TO