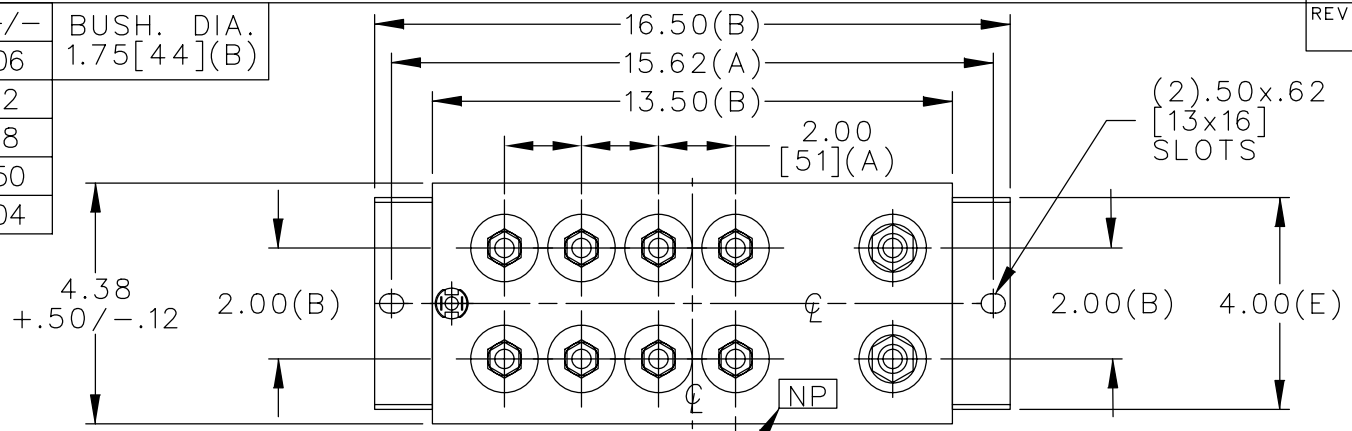
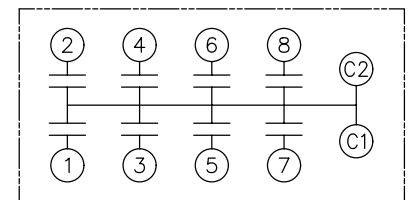


| TOL | +/- | BUSH. DIA.  |
|-----|-----|-------------|
| A   | .06 | 1.75[44](B) |
| B   | .12 |             |
| C   | .18 |             |
| D   | .50 |             |
| E   | .04 |             |



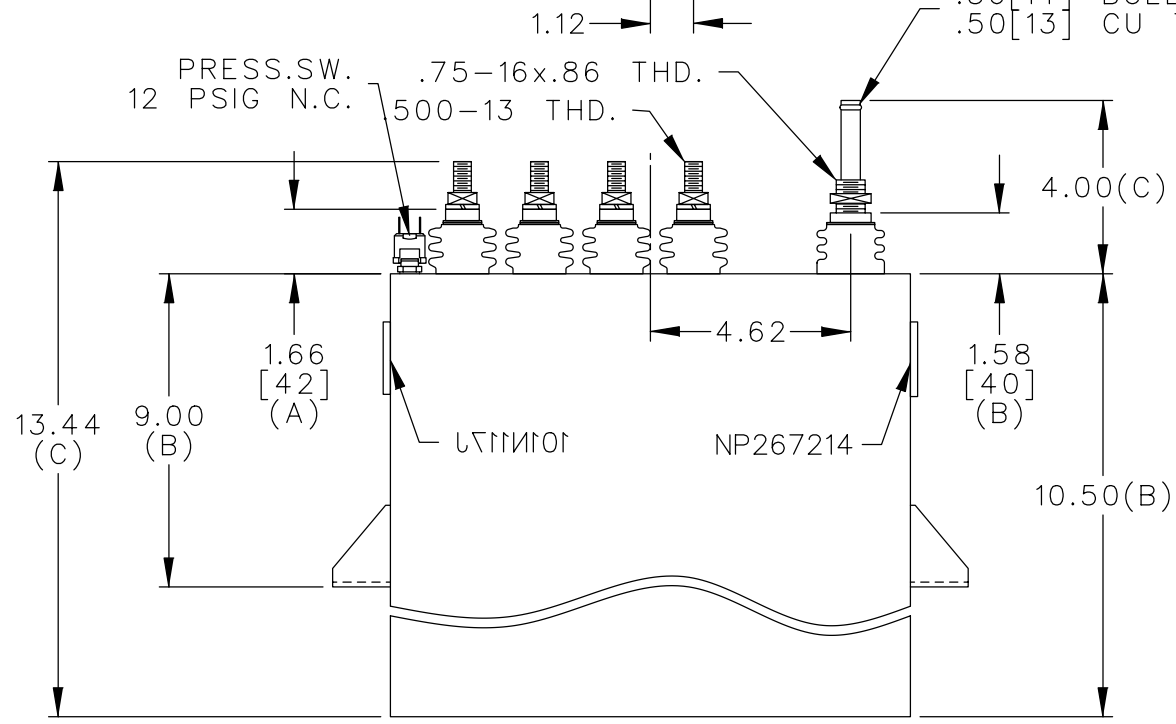
| TERM | uF    | kVAR |
|------|-------|------|
| 1    | 10.61 | 270  |
| 2    | 10.61 | 270  |
| 3    | 10.61 | 270  |
| 4    | 10.61 | 270  |
| 5    | 10.61 | 270  |
| 6    | 10.61 | 270  |
| 7    | 10.61 | 270  |
| 8    | 10.61 | 270  |



PRESS.SW.  
12 PSIG N.C.

.75-16x.86 THD.  
500-13 THD.

NP267192A .56[14] BULB ON  
.50[13] CU TUBE



NO INTERNAL DISCH RESISTORS  
CAT. 19L0233WH4  
2160KVAR 900V 5000HZ 1PH  
8x10.61 UF/TAP  
1.6 GAL COMBUSTIBLE LIQUID  
CAUTION! BEFORE INSTALLING OR  
OPERATING READ GEH 2733  
NP267214

\* UP TO +.50[13]  
CASE BULGE

MAX. TERMINAL  
TIGHTENING TORQUE  
15 FT-LBS

NP267192A

|   |                                     |                                      |       |             |
|---|-------------------------------------|--------------------------------------|-------|-------------|
| <p>CAPACITOR &amp; POWER PROTECTION<br/>FORT EDWARD, N.Y., U.S.A.</p> | SIZE<br><b>A</b>                    | <p><b>OUTLINE</b><br/>19L0233WH4</p> | SHEET | CONT.<br>ON |
|   | <p>DRAWN E.McGINN AUG. 30, 2001</p> |                                      |       |             |
| <p>ISSUED</p>   |                                     |                                      |       |             |

DISTR TO