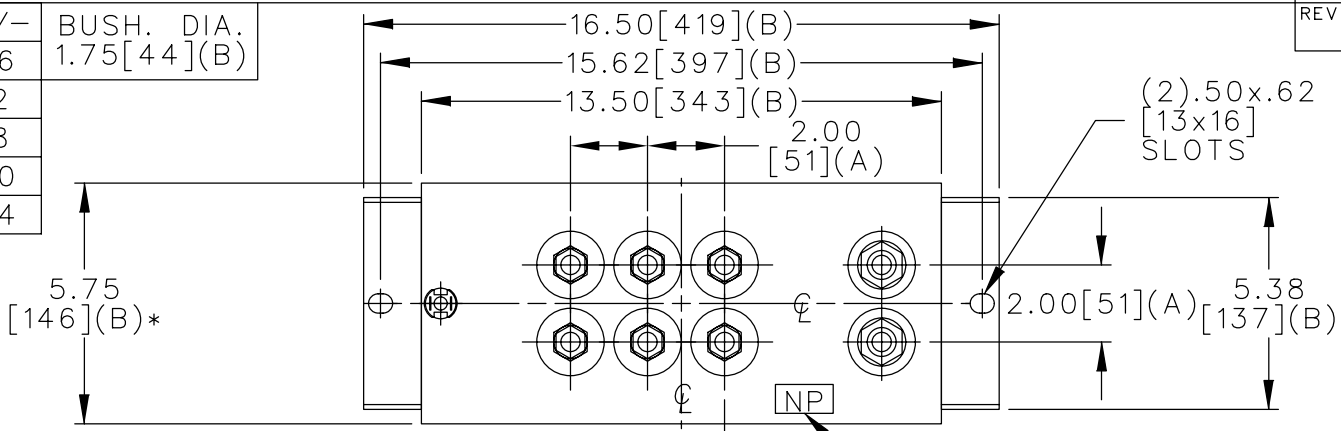
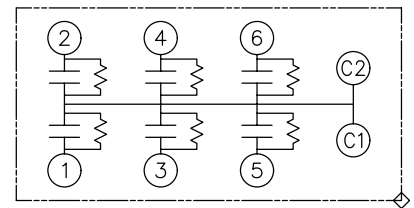


TOL	+/-	BUSH. DIA.
A	.06	1.75[44](B)
B	.12	
C	.18	
D	.50	
E	.04	



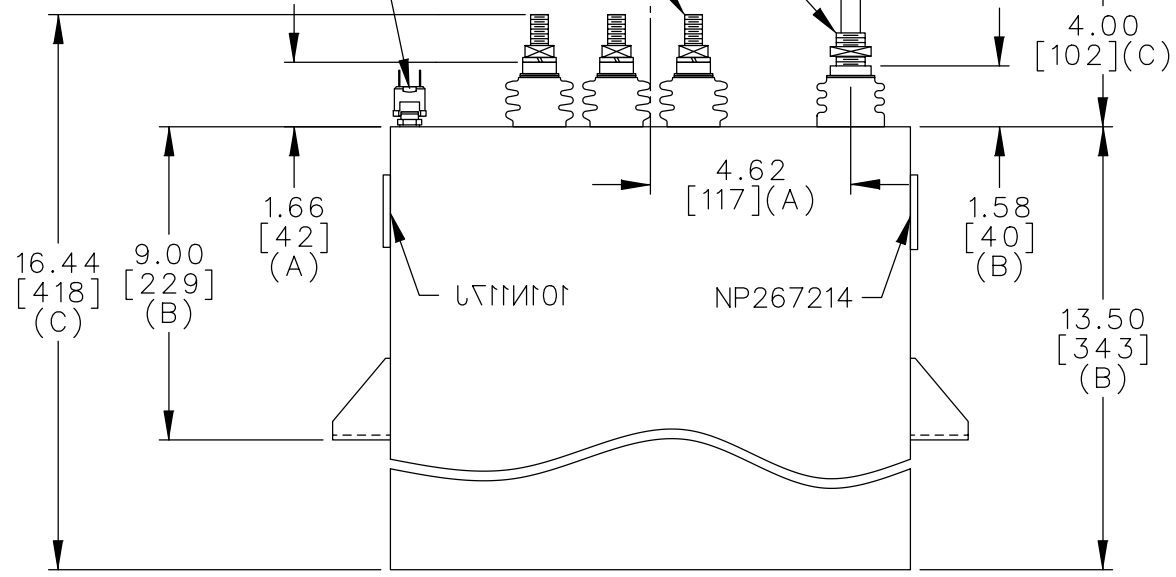
TERM	uF	kVAR
1	21.39	302.5
2	21.39	302.5
3	21.39	302.5
4	21.39	302.5
5	21.39	302.5
6	21.39	302.5



SCHEMATIC DIAGRAM - 617

WITH INTERNAL DISCH RESISTORS
 CAT. 19L0242WH4 SN
 1815KVAR 1500V 1000HZ 1PH
 6x21.39 UF/TAP
 2.0 GALS. COMBUSTIBLE LIQUID
 CAUTION! BEFORE INSTALLING OR
 OPERATING READ GEH-2733
 NP267214

NP267192A
 .56[14] BULB ON
 .50[13] CU TUBE
 1.12[28](A)
 PRESS.SW. 12 PSIG N.C.
 .75-16x.86 THD.
 500-13 THD.



* UP TO +.50[13]
 CASE BULGE

MAX. TERMINAL
 TIGHTENING TORQUE
 15 FT-LBS

NP267192A

	CAPACITOR & POWER PROTECTION FORT EDWARD, N.Y., U.S.A.		SIZE A	OUTLINE 19L0242WH4	SHEET 2 CONT. ON -
	DRAWN E.McGINN	OCT. 24, 1997	SCALE		
ISSUED					

DISTR TO