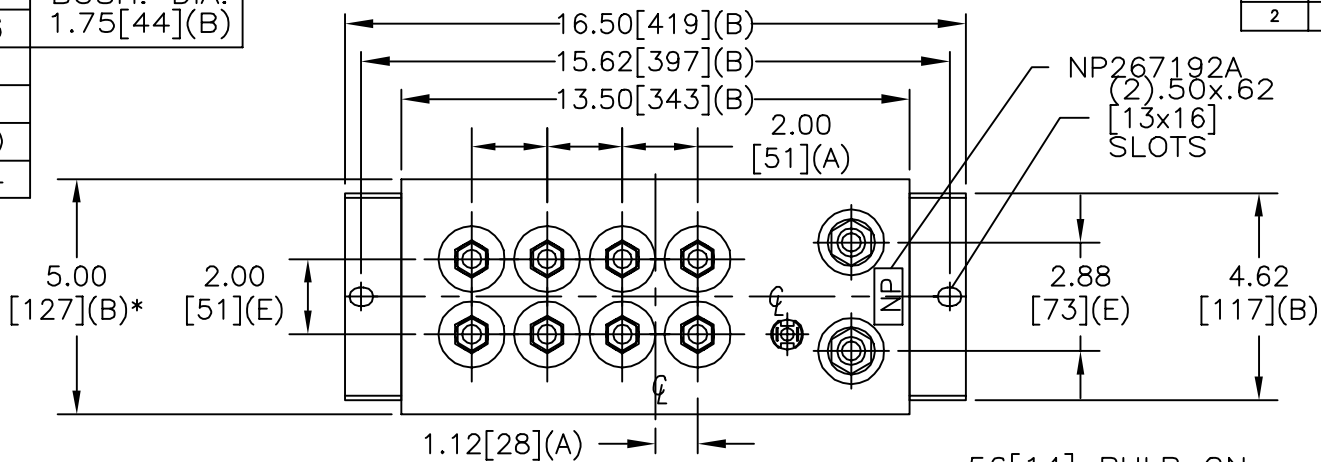
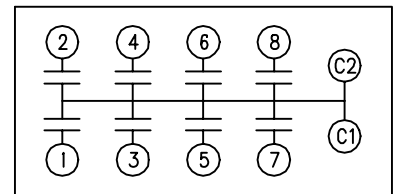


SIZE A	DWG NO 19L0256WH4	SHT 2	REV 2
REV 2	DESCRIPTION UPDATE TO AUTOCAD	DATE 3/20/02	APPROVED B.ROSS

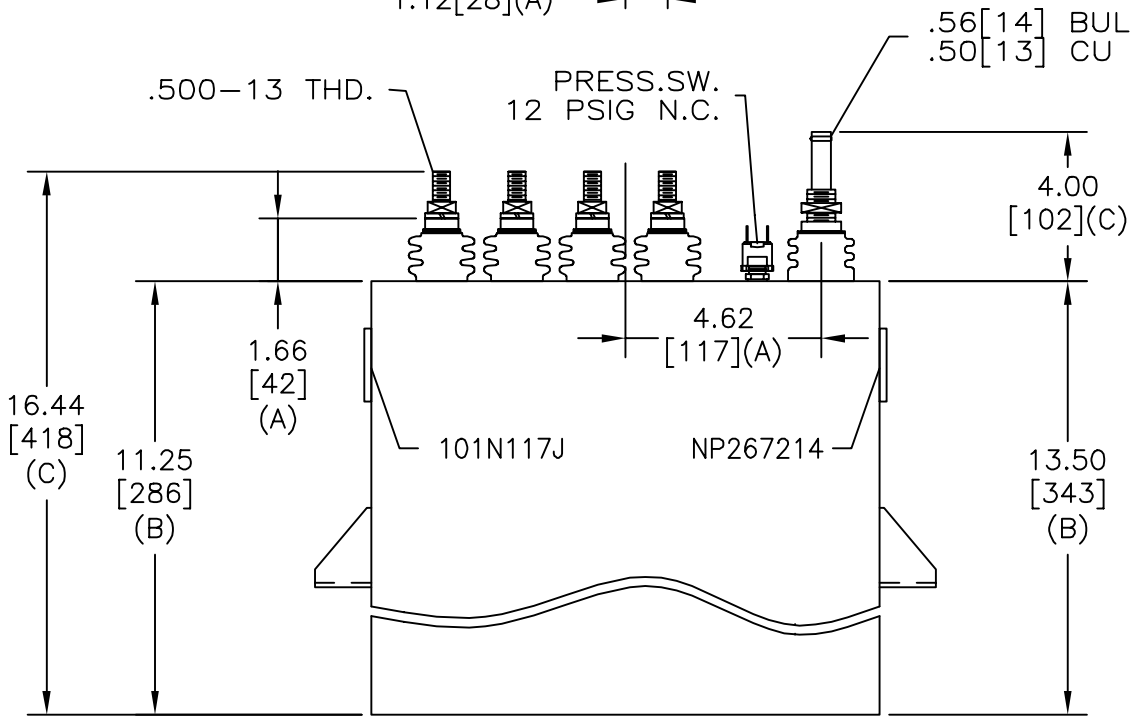
TOL	+/-	BUSH. DIA.
A	.06	1.75[44](B)
B	.12	
C	.18	
D	.50	
E	.04	



TERM	uF	kVAR
1	4.8	35.34
2	4.8	35.34
3	14.4	106.0
4	14.4	106.0
5	26.4	194.38
6	26.4	194.38
7	26.4	194.38
8	26.4	194.38



SCHEMATIC DIAGRAM - 800



NO INTERNAL DISCH RESISTORS  
 CAT. 19L0256WH4 SN  
 1060KVAR 625V 3000HZ 1PH  
 2X4.8+2X14.4+4X26.4 UF/TAP  
 1.80 GAL. COMBUSTIBLE LIQUID  
 CAUTION! BEFORE INSTALLING OR  
 OPERATING READ GEH-2733

NP267214

\* UP TO +.50[13]  
 CASE BULGE

MAX. TERMINAL  
 TIGHTENING TORQUE  
 15 FT-LBS

NP267192A

<b>INDUSTRIAL SYSTEMS</b> FORT EDWARD, N.Y., U.S.A.	SIZE A	OUTLINE 19L0256WH4
	SCALE	
DRAWN E. McGinn	DATE JAN. 10, 1997	SHEET 2 CONT ON -
ISSUED	DATE 1-15-97	

DISTR. TO