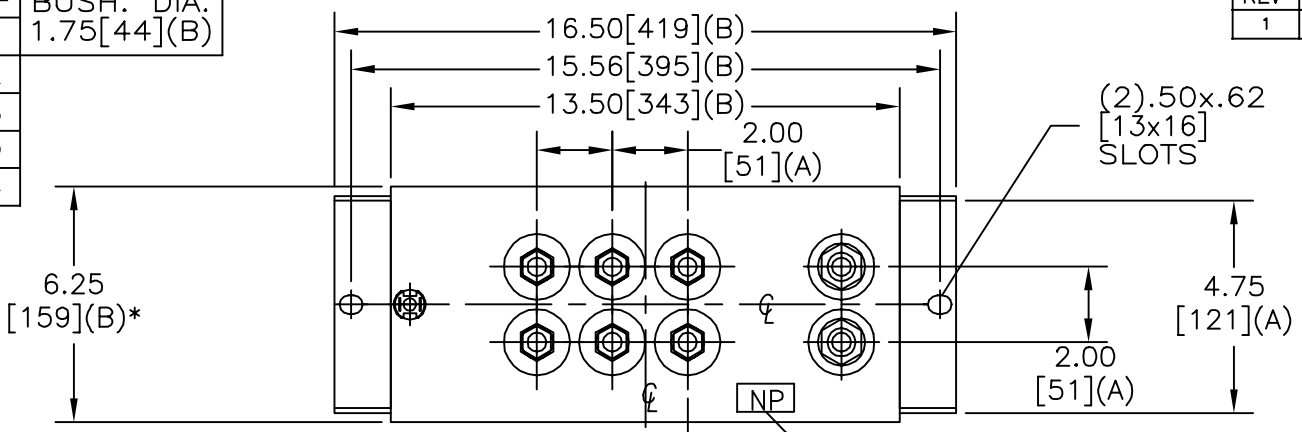
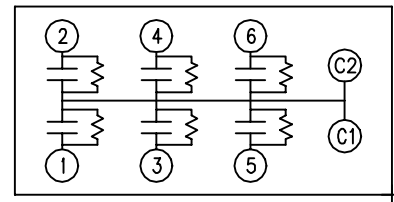


SIZE A	DWG NO 19L0273WH4	SHT 2	REV 1
REV 1	DESCRIPTION UPDATE CAT NO.	DATE 7/23/03	APPROVED BTR

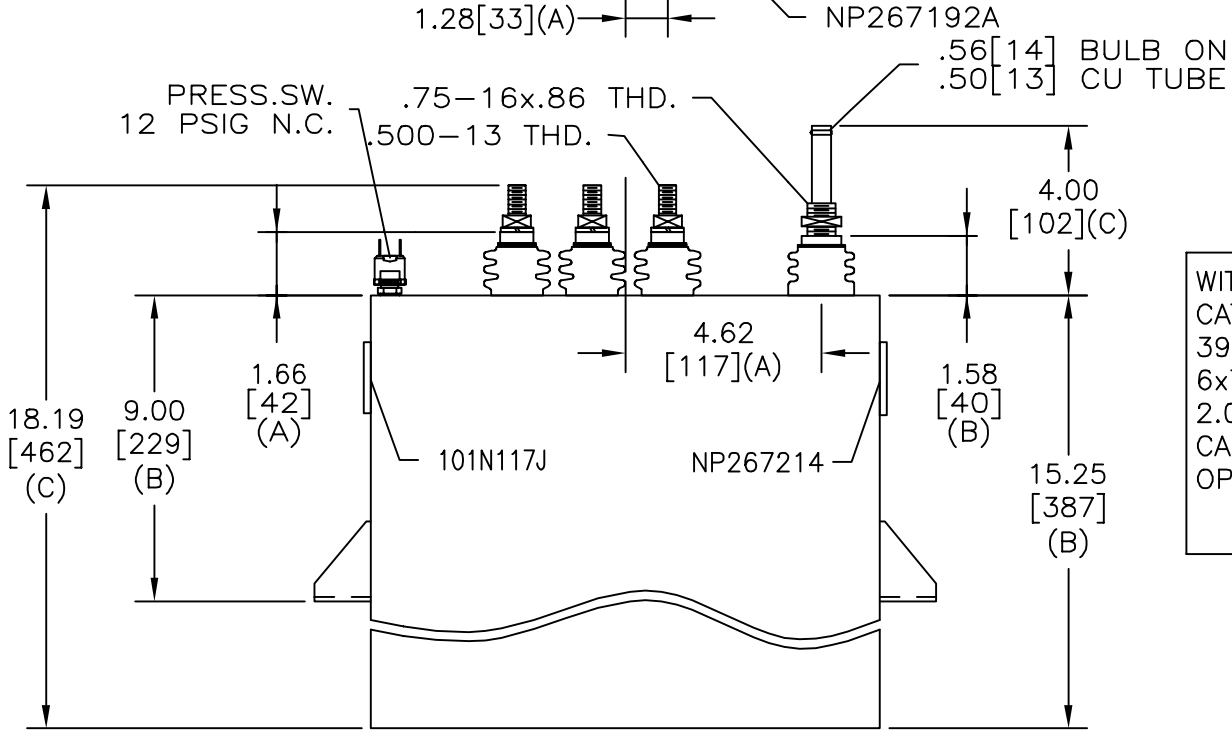
TOL	+/-	BUSH. DIA. 1.75[44](B)
A	.06	
B	.12	
C	.18	
D	.50	
E	.04	



TERM	uF	kVAR
1	7.23	660
2	7.23	660
3	7.23	660
4	7.23	660
5	7.23	660
6	7.23	660



SCHEMATIC DIAGRAM - 617



WITH INTERNAL DISCH RESISTORS  
 CAT. 19L0273WH4 SN  
 3960KVAR 2200V 3000HZ 1PH  
 6x7.23 UF/TAP  
 2.00 GAL. COMBUSTIBLE LIQUID  
 CAUTION! BEFORE INSTALLING OR  
 OPERATING READ GEH-2733

NP267214

\* UP TO +.50[13]  
 CASE BULGE

MAX. TERMINAL  
 TIGHTENING TORQUE  
 15 FT-LBS

NP267192A

<b>INDUSTRIAL SYSTEMS</b> FORT EDWARD, N.Y., U.S.A.	SIZE A
	SCALE
DRAWN E. McGinn	DATE APR 30, 1997
ISSUED	DATE 4/30/1997

<h1>OUTLINE</h1> <h2>19L0273WH4</h2>	
SHEET 2	CONT ON -

DISTR. TO