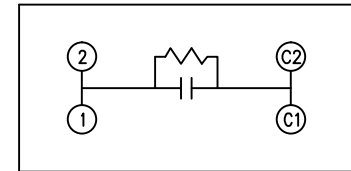
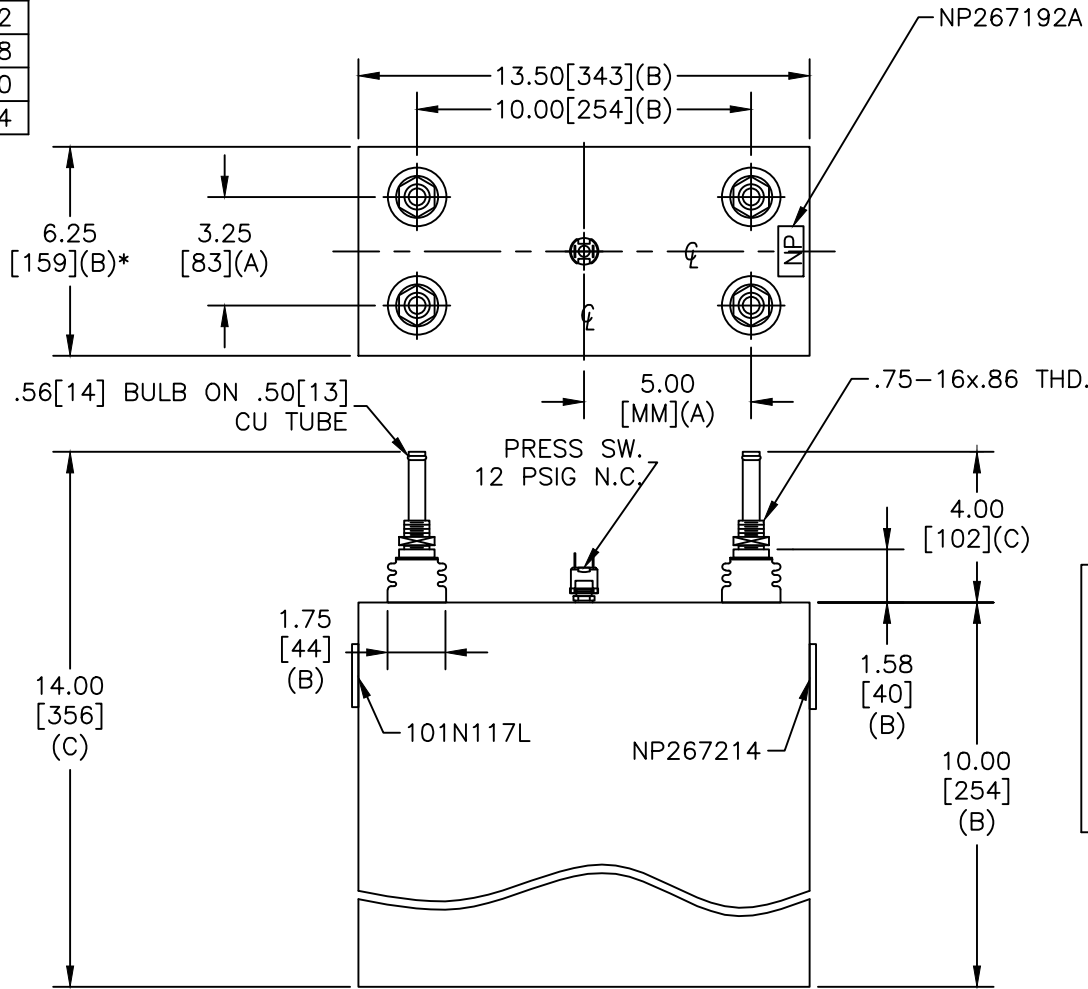


TOL	+/-
A	.06
B	.12
C	.18
D	.50
E	.04

SIZE	DWG NO	SHT	REV
A	19L0284WH2	2	1
REV	DESCRIPTION	DATE	APPROVED
1	UPDATE TO NEW DWG	8/11/11	DMR



SCHEMATIC DIAGRAM - 107

WITH INTERNAL DISCH RESISTORS
 CAT. 19L0284WH2 SN
 1815KVAR 1500V 1000HZ 1PH
 128.4 UF
 1.6 GAL. COMBUSTIBLE LIQUID
 CAUTION! BEFORE INSTALLING OR
 OPERATING READ GEH-2733

NP267214

* UP TO +.50 [13]
 CASE BULGE

MAX. TERMINAL
 TIGHTENING TORQUE
 15 FT-LBS

NP267192A

INDUSTRIAL SYSTEMS FORT EDWARD, N.Y., U.S.A.		SIZE A	<h1>OUTLINE</h1> <h2>19L0284WH2</h2>		DISTR. TO
DRAWN DMR	DATE 9/02/91	SCALE			
ISSUED	DATE		SHEET 2	CONT ON 3	