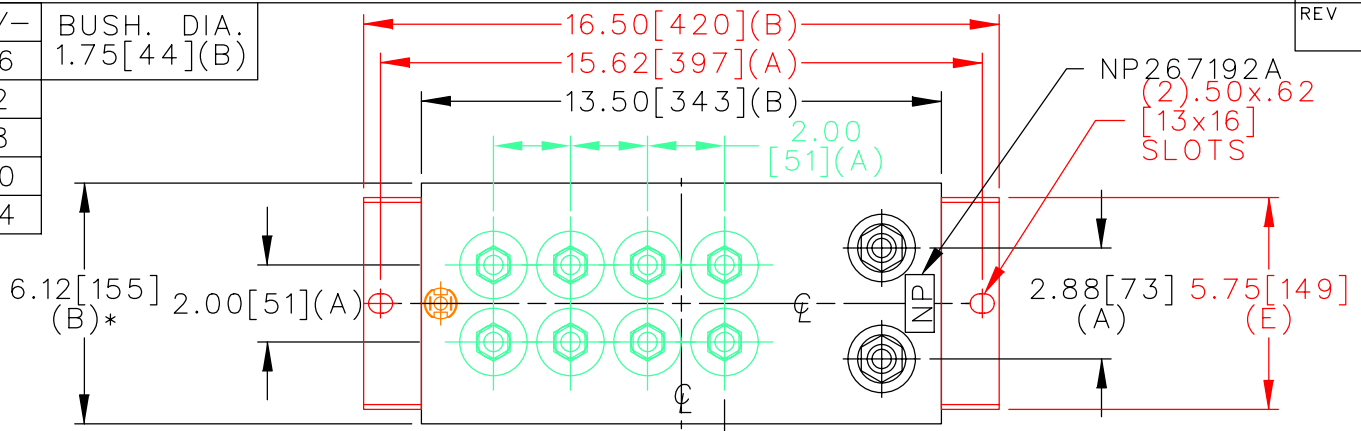
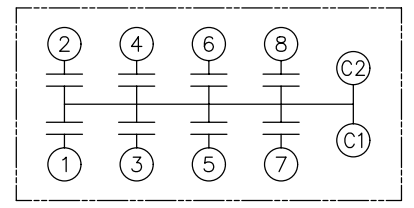


| TOL | +/- | BUSH. DIA.  |
|-----|-----|-------------|
| A   | .06 | 1.75[44](B) |
| B   | .12 |             |
| C   | .18 |             |
| D   | .50 |             |
| E   | .04 |             |

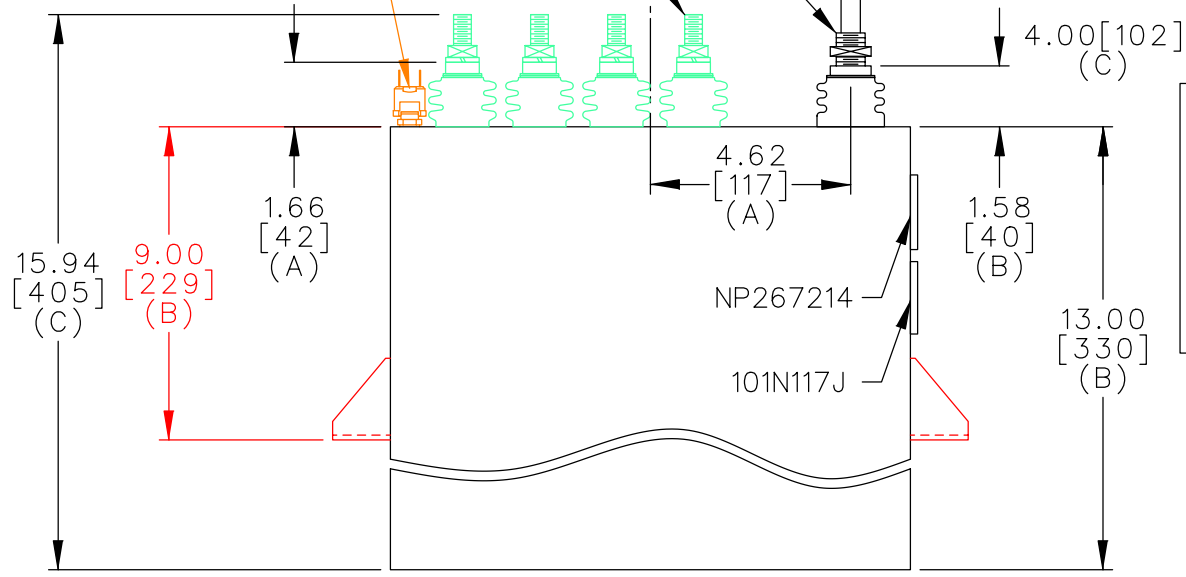
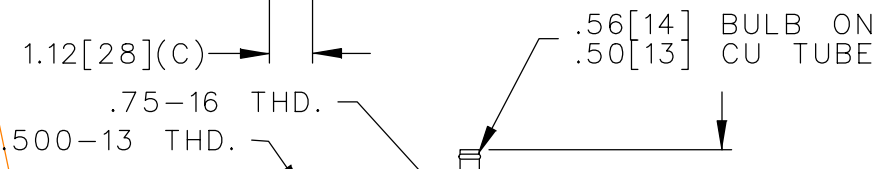


| TERM | uF   | kVAR |
|------|------|------|
| 1    | 34.1 | 210  |
| 2    | 34.1 | 210  |
| 3    | 34.1 | 210  |
| 4    | 34.1 | 210  |
| 5    | 34.1 | 210  |
| 6    | 34.1 | 210  |
| 7    | 34.1 | 210  |
| 8    | 34.1 | 210  |



SCHEMATIC DIAGRAM - 800

PRESS.SW.  
12 PSIG N.C.



NO INTERNAL DISCH RESISTORS  
 CAT 19L0290WH4 SN  
 1680KVAR 700V 2000HZ 1PH  
 8X34.1 UF/TAP  
 2.3 GAL COMBUSTIBLE LIQUID  
 CAUTION! BEFORE INSTALLING OR  
 OPERATING READ GEH-2733  
 NP267214

\* UP TO +.50[13]  
CASE BULGE

MAX. TERMINAL  
TIGHTENING TORQUE  
15 FT-LBS

NP267192A

|        |   |               |                  |                       |                  |
|--------|---|---------------|------------------|-----------------------|------------------|
|        | CAPACITOR & POWER PROTECTION<br>FORT EDWARD, N.Y., U.S.A. |               | SIZE<br><b>A</b> | OUTLINE<br>19L0290WH4 | SHEET 2 CONT. ON |
|        | DRAWN E.McGINN  | NOV. 26, 1996 | SCALE            |                       |                  |
| ISSUED |   |               |                  |                       | DISTR TO         |