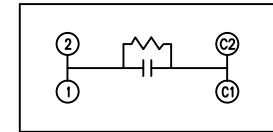
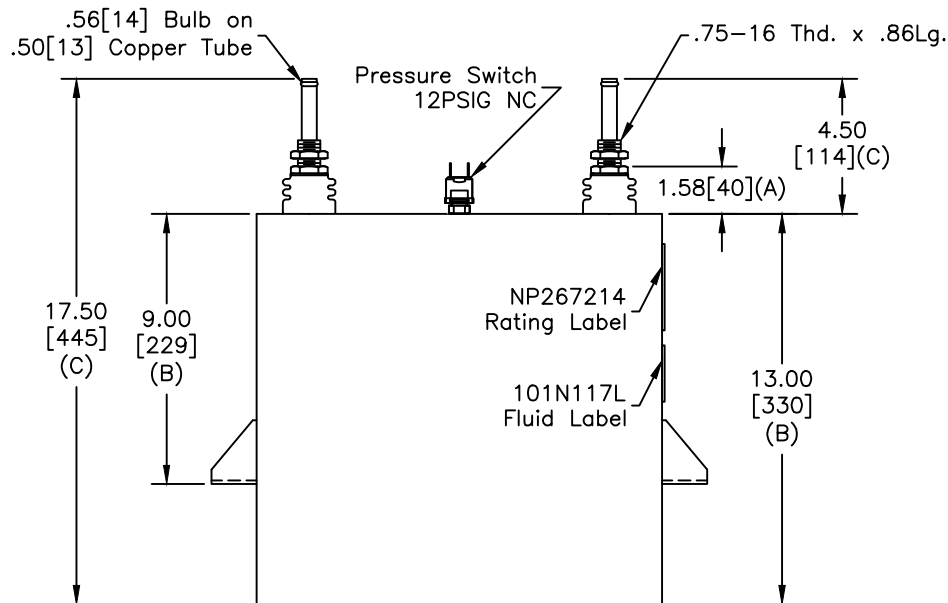
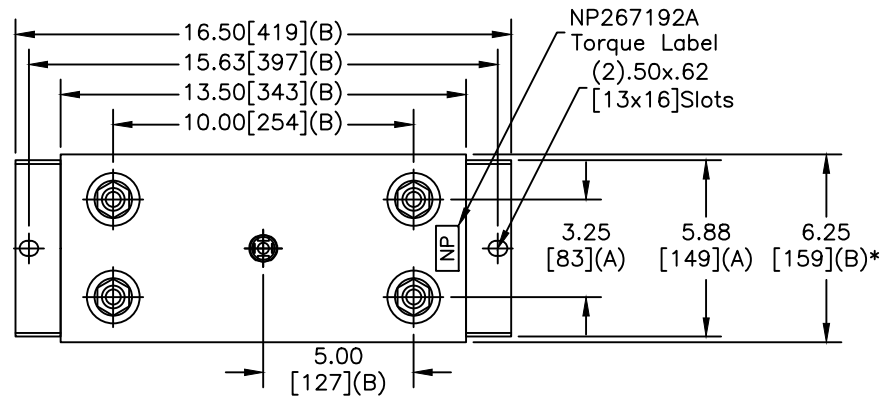


TOL	+/-
A	.06
B	.12
C	.18
D	.50
E	.04
BUSH. DIA.	1.75[44](B)

SIZE	DWG NO	SHT	REV
A	19L0294WH4	2	
REV	DESCRIPTION	DATE	APPROVED



**GE** CAPACITOR  
WITH INTERNAL DISCHARGE RESISTORS

CAT. 19L0294WH4 SN  
3000KVAR 1250V 2000HZ 1PH  
152.8 UF  
1.72 GAL. COMBUSTIBLE LIQUID  
CAUTION! BEFORE INSTALLING OR  
OPERATING READ GEH-2733

MADE IN USA NP267214

\* UP TO +.50[13]  
CASE BULGE

MAX. TERMINAL  
TIGHTENING TORQUE  
15 FT-LBS.

NP267192A

	GE ENERGY FORT EDWARD, N.Y., U.S.A.		SIZE A	Est Weight 61 lbs. 28 kg	OUTLINE 19L0294WH4		
	DRAWN JBC	DATE 5/11/2015	SCALE				
ISSUED	DATE						

DISTR. TO