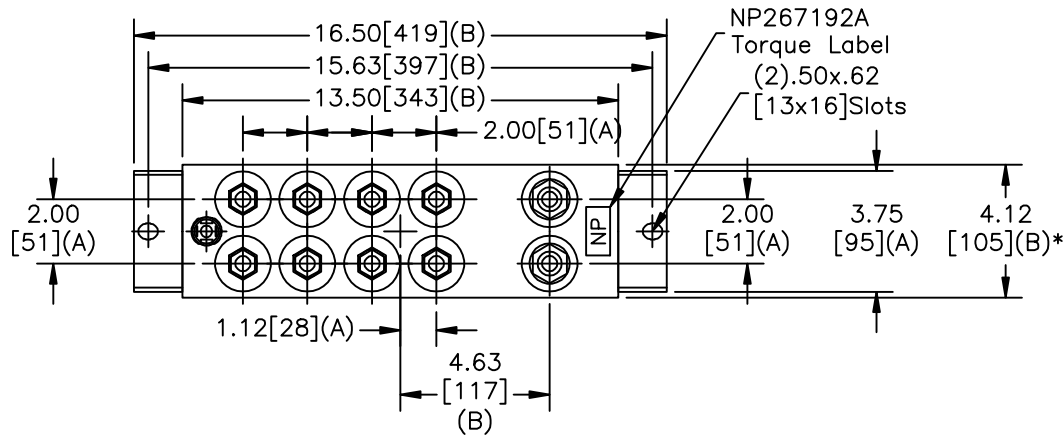
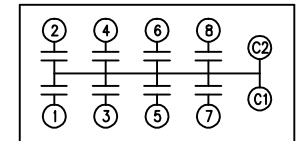
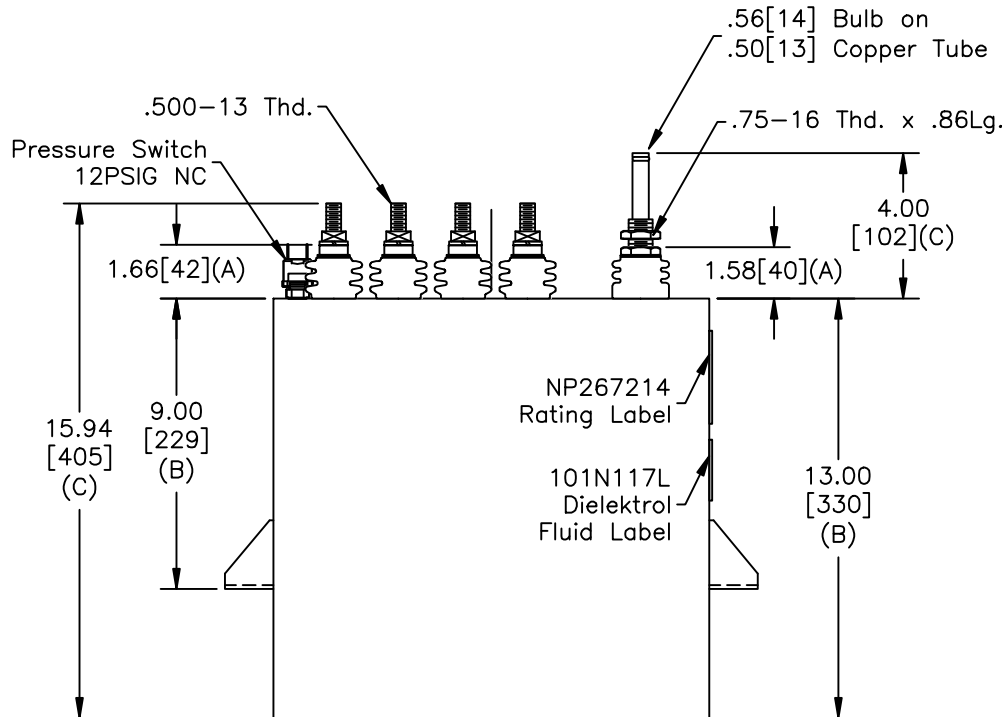


SIZE A	DWG NO 19L0353WH3	SHT 2	REV
REV	DESCRIPTION	DATE	APPROVED

TOL	+/-
A	.06
B	.12
C	.18
D	.50
E	.04
BUSH. DIA. 1.75[44](B)	



TERM	uF	kVAR
1	3.13	283
2	3.13	283
3	3.13	283
4	3.13	283
5	3.13	283
6	3.13	283
7	3.13	283
8	3.13	283



SCHEMATIC DIAGRAM - 800

**GE CAPACITOR**  
NO INTERNAL DISCHARGE RESISTORS  
CAT. 19L0353WH3 SN  
2262KVAR 1200V 10000HZ 1PH  
8x3.13UF/TAP  
1.6 GAL. COMBUSTIBLE LIQUID  
CAUTION! BEFORE INSTALLING OR  
OPERATING READ GEH-2733  
MADE IN USA NP267214

\* UP TO +.50[13] CASE BULGE

MAX. TERMINAL TIGHTENING TORQUE 15 FT-LBS.

NP267192A

<b>GE ENERGY</b> FORT EDWARD, N.Y., U.S.A.	SIZE A	Est Weight 230 lbs.	<h1>OUTLINE</h1> <h2>19L0353WH3</h2>		DISTR. TO
	DRAWN B.Ross ISSUED				