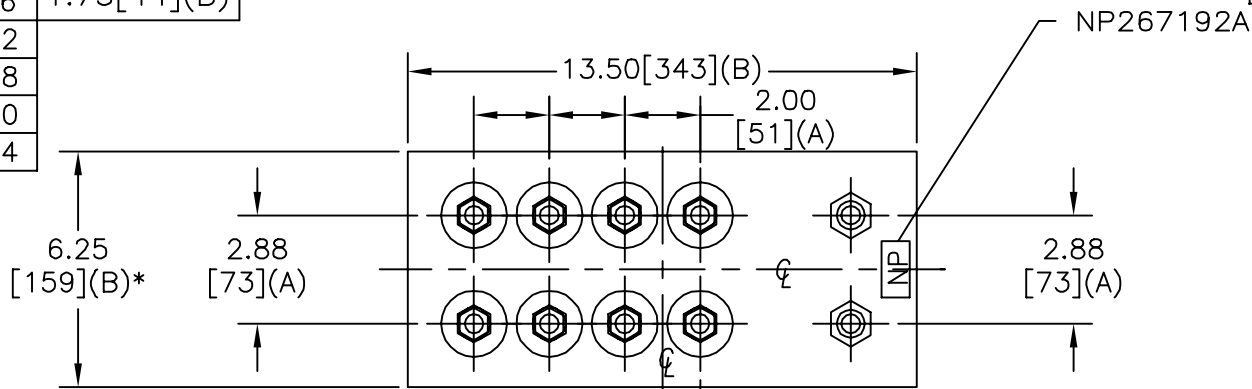
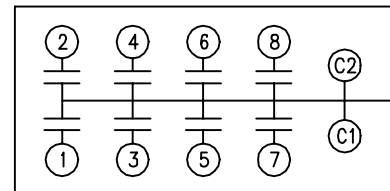


SIZE A	DWG NO 19L0356WH1	SHT 2	REV
REV	DESCRIPTION	DATE	APPROVED

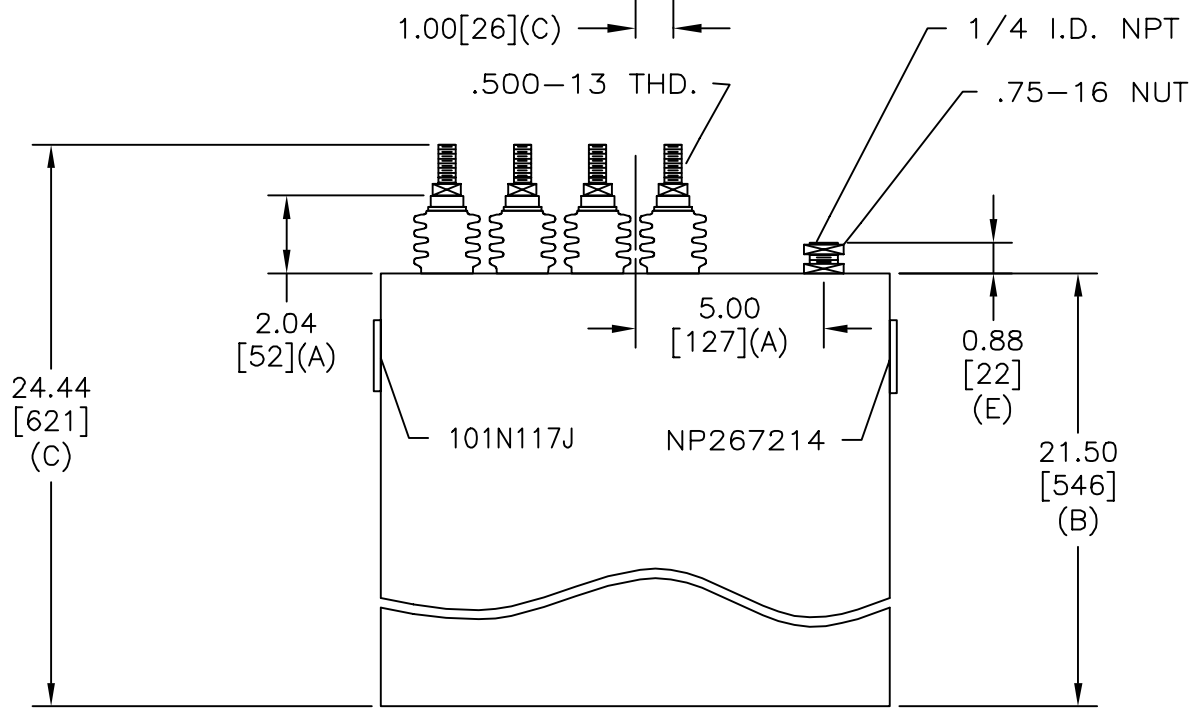
TOL	+/-	BUSH. DIA. 1.75[44](B)
A	.06	
B	.12	
C	.18	
D	.50	
E	.04	



TERM	uF	kVAR
1	38.51	287.5
2	38.51	287.5
3	38.51	287.5
4	38.51	287.5
5	38.51	287.5
6	38.51	287.5
7	38.51	287.5
8	38.51	287.5



SCHEMATIC DIAGRAM - 801



WITH INTERNAL DISCH RESISTORS
 CAT. SN
 2300KVAR 1090V 1000HZ PH
 8x38.51 UF/TAP
 2.50 GAL. COMBUSTIBLE LIQUID
 CAUTION! BEFORE INSTALLING OR
 OPERATING READ GEH-2733

NP267214

* UP TO +.50[13]
 CASE BULGE

MAX. TERMINAL
 TIGHTENING TORQUE
 15 FT-LBS

NP267192A

INDUSTRIAL SYSTEMS FORT EDWARD, N.Y., U.S.A.		SIZE A	<h1>OUTLINE</h1> <h2>19L0356WH1</h2>	
DRAWN B.ROSS	DATE JUL 11, 2002	SCALE		
ISSUED	DATE	SHEET 2	CONT ON 3	DISTR. TO