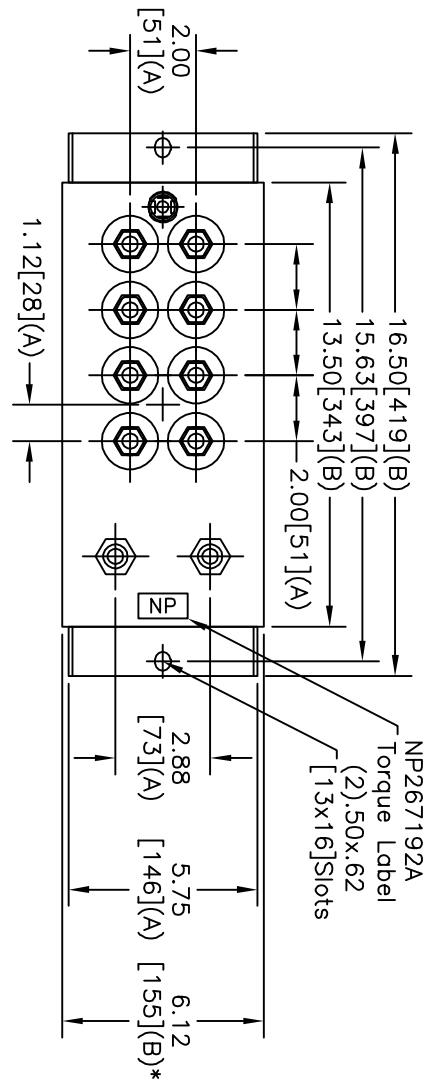
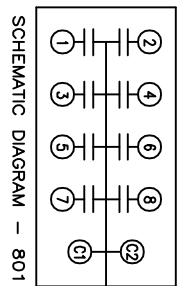
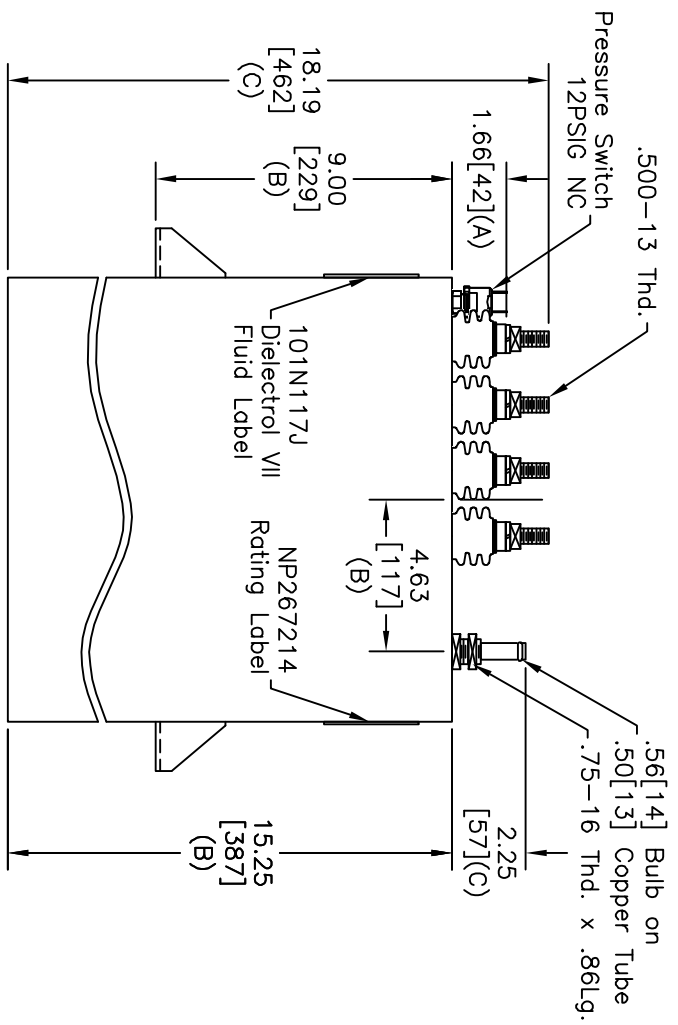


TOL	+/-
A	.06
B	.12
C	.18
D	.50
E	.04
BUSH, DIA.	1.75[.44](B)



TERM	UF	KVAR
1	14.84	363
2	14.84	363
3	14.84	363
4	14.84	363
5	14.84	363
6	14.84	363
7	14.84	363
8	14.84	363



NO INTERNAL DISCH RESISTORS  
 CAT. 19L0358WH4 SN  
 2900KVAR 1800V 1200HZ 1PH  
 8x14.84UF/TAP  
 2.3 GAL. COMBUSTIBLE LIQUID  
 CAUTION! BEFORE INSTALLING OR  
 OPERATING READ GEH-2733  
 MADE IN USA NP267214

\* UP TO +.50[13]  
 CASE BULGE

MAX. TERMINAL  
 TIGHTENING TORQUE  
 15 FT-LBS.  
 NP267192A

		GE ENERGY		SIZE A
		FORT EDWARD, N.Y., U.S.A.		
DRAWN	E.McGINN	DATE	9/9/2000	SCALE
ISSUED		DATE	3/15/2000	
WC2		SHEET 2		CONT ON
19L0358WH4		OUTLINE		
DISTR. TO		SHEET 2		CONT ON

SIZE	DWG NO	SHT	REV
A	19L0358WH4	2	1
REV	DESCRIPTION	DATE	APPROVED
1	REDDRAW	2/16/2006	BTR