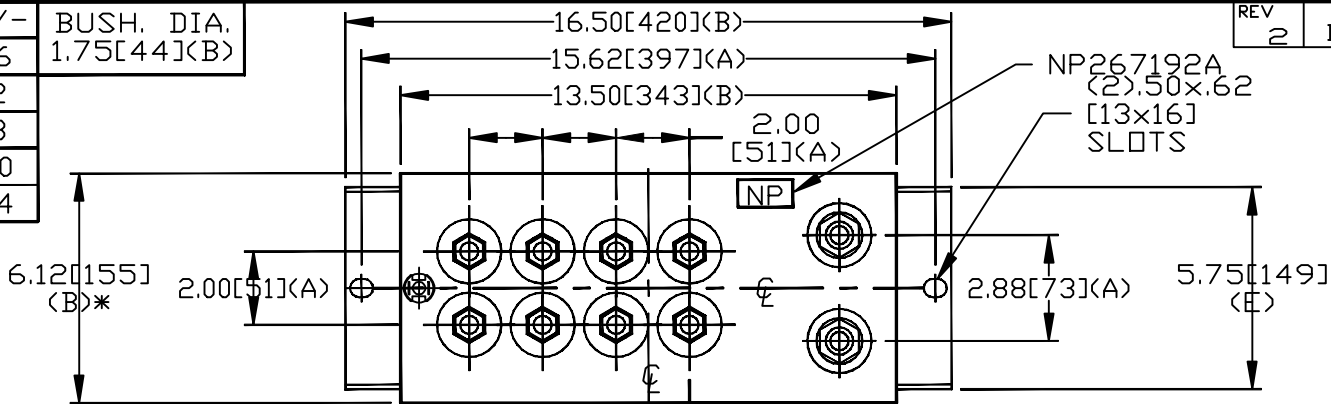
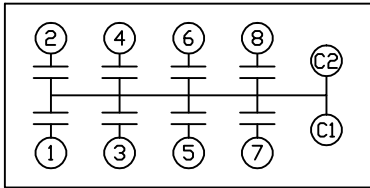
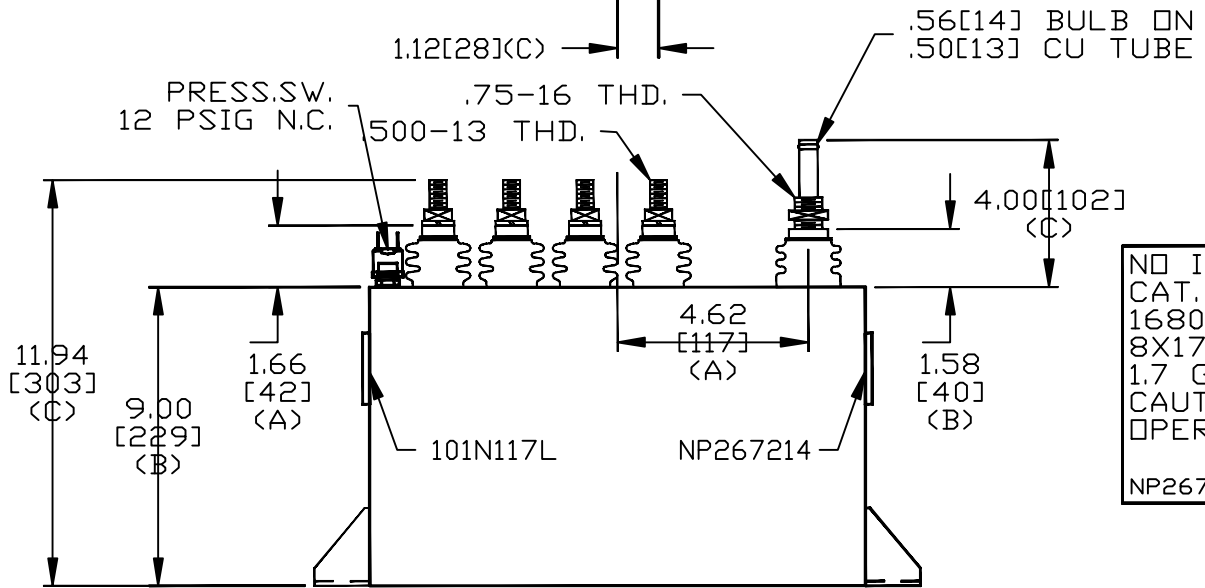


TOL	+/-	BUSH. DIA.
A	.06	1.75[44]<B>
B	.12	
C	.18	
D	.50	
E	.04	



TERM	uF	kVAR
1	17.05	210
2	17.05	210
3	17.05	210
4	17.05	210
5	17.05	210
6	17.05	210
7	17.05	210
8	17.05	210



SCHEMATIC DIAGRAM - 800

NO INTERNAL DISCH RESISTORS  
 CAT. 19L0381WH4 SN  
 1680KVAR 700V 4000HZ 1PH  
 8X17.05 UF/TAP  
 1.7 GAL COMBUSTIBLE LIQUID  
 CAUTION! BEFORE INSTALLING OR  
 OPERATING READ GEH-2733  
 NP267214

\* UP TO +.50[13]  
 CASE BULGE

MAX. TERMINAL  
 TIGHTENING TORQUE  
 15 FT-LBS

NP267192A

	CAPACITOR & POWER PROTECTION FORT EDWARD, N.Y., U.S.A.		SIZE <b>A</b>	OUTLINE 19L0381WH4	
	DRAWN E.McGINN ISSUED 1-7-98	JAN. 7, 1998		SCALE	SHEET 2 CONT. ON

DISTR TO