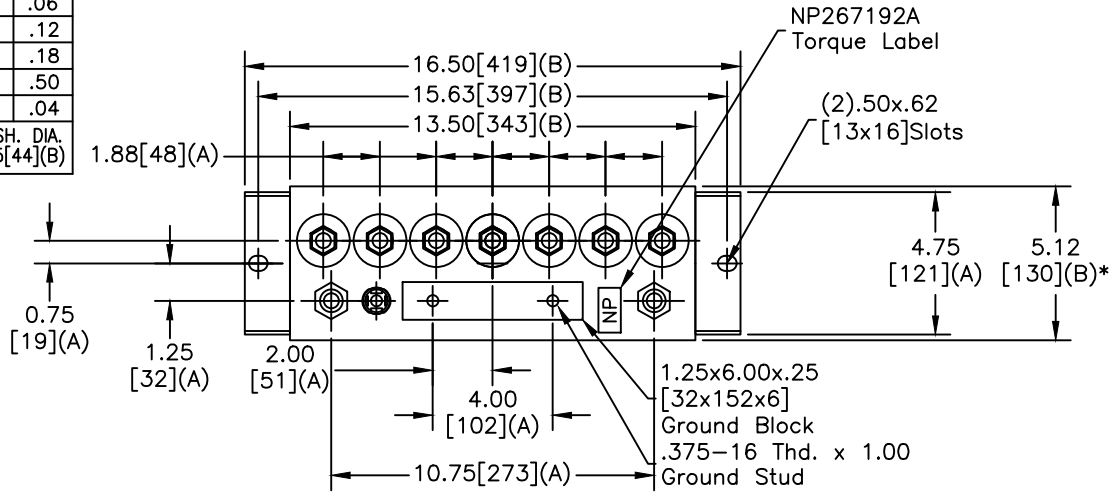
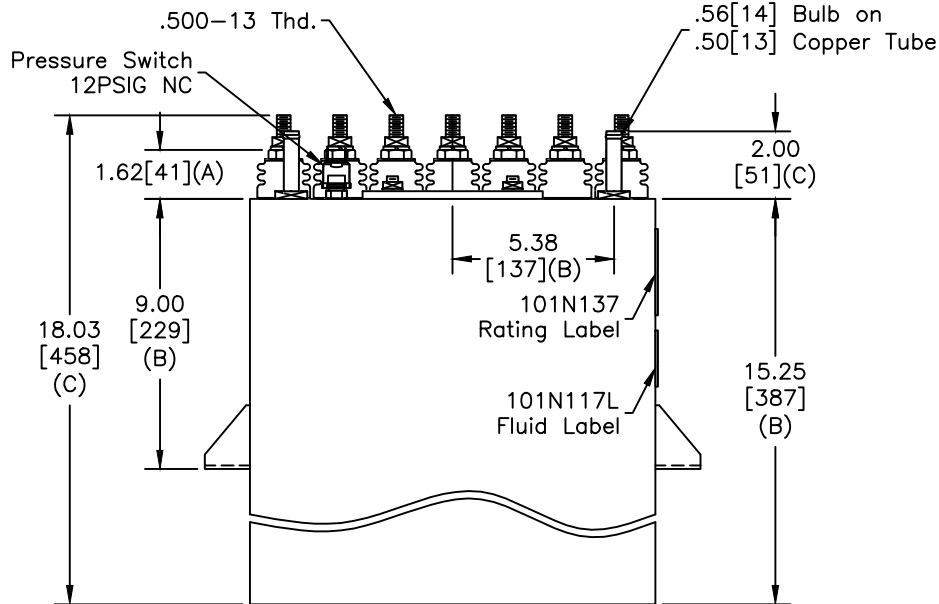
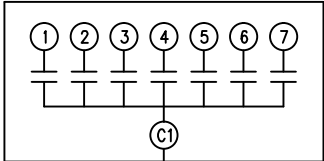


SIZE A	DWG NO 19L0399WH4	SHT 2	REV 1
REV 1	DESCRIPTION UPDATE BUSHINGS	DATE 5/21/2014	APPROVED JBC

TOL	+/-
A	.06
B	.12
C	.18
D	.50
E	.04
BUSH. DIA.	1.75[44](B)



TERM	uF	kVAR
1	3.82	375
2	3.82	375
3	3.82	375
4	3.82	375
5	3.82	375
6	3.82	375
7	3.82	375



CAPACITOR

NO INTERNAL DISCHARGE RESISTORS

CAT. 19L0399WH4 SN
2625KVAR 1250V 10000HZ 1PH
7X3.82 UF/TAP
1.9 GAL. COMBUSTIBLE LIQUID
CAUTION! BEFORE INSTALLING OR
OPERATING READ GEH-2733

MADE IN U.S.A.

NP267214

* UP TO +.50[13] CASE BULGE

MAX. TERMINAL TIGHTENING TORQUE 15 FT.-LBS.

NP267192A

GE ENERGY FORT EDWARD, N.Y., U.S.A.		SIZE A	Est Weight 63 lbs.	OUTLINE 19L0399WH4
DRAWN BTR	DATE 1/28/2010	SCALE		
ISSUED	DATE 1/28/2010	WC9	SHEET 2	CONT ON 3

DISTR. TO