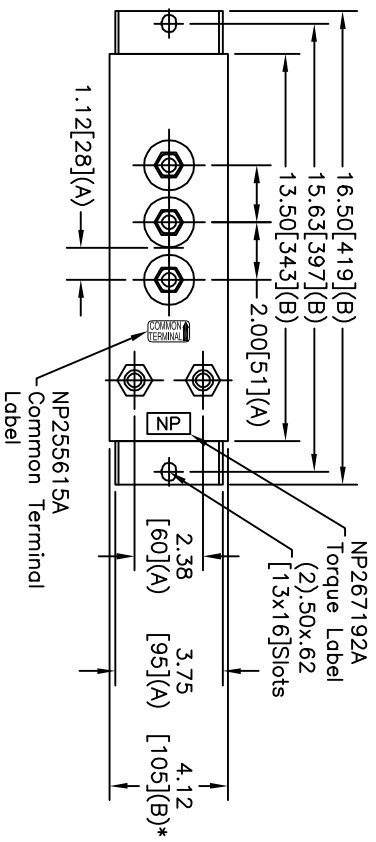
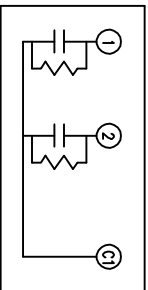
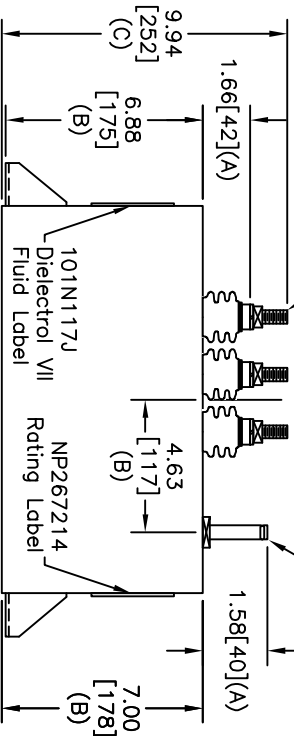


| TOL       | +/-         |
|-----------|-------------|
| A         | .06         |
| B         | .12         |
| C         | .18         |
| D         | .50         |
| E         | .04         |
| BUSH, DIA | 1.75[44](B) |



| TERM | UF   |
|------|------|
| 1    | 54.2 |
| 2    | 10.8 |

.500-13 Thd.  
.56[14] Bulb on  
.50[13] Copper Tube



SCHEMATIC DIAGRAM - 212

WITH INTERNAL DISCH RESISTORS  
CAT. 19L0411WH3 SN  
750V/PK 65UF  
54.2+10.8 UF/TAP  
0.9 GAL. COMBUSTIBLE LIQUID  
CAUTION! BEFORE INSTALLING OR  
OPERATING READ GEH-2733  
NP267214  
MADE IN USA

| SIZE | DWG NO      | SHT       | REV      |
|------|-------------|-----------|----------|
| A    | 19L0411WH3  | 2         | 0        |
| REV  | DESCRIPTION | DATE      | APPROVED |
| 0    | NEW         | 9/26/2006 | BTR      |

\* UP TO +.50[13]  
CASE BULGE

MAX. TERMINAL  
TIGHTENING TORQUE  
15 FT-LBS.  
NP267192A

|  |         |       |           |                                     |
|--|---------|-------|-----------|-------------------------------------|
| <b>GE ENERGY</b><br><b>FORT EDWARD, N.Y., U.S.A.</b> |         | SIZE  | A         |                                     |
|  |         | SCALE | WC11      |                                     |
| DRAWN  | B. ROSS | DATE  | 9/26/2006 | <b>OUTLINE</b><br><b>19L0411WH3</b> |
| ISSUED   |         | DATE  | 9/26/2006 |                                     |
|  |         |       | SHEET     | 2                                   |
|  |         |       | CONT      | 3                                   |

DISTR. TO