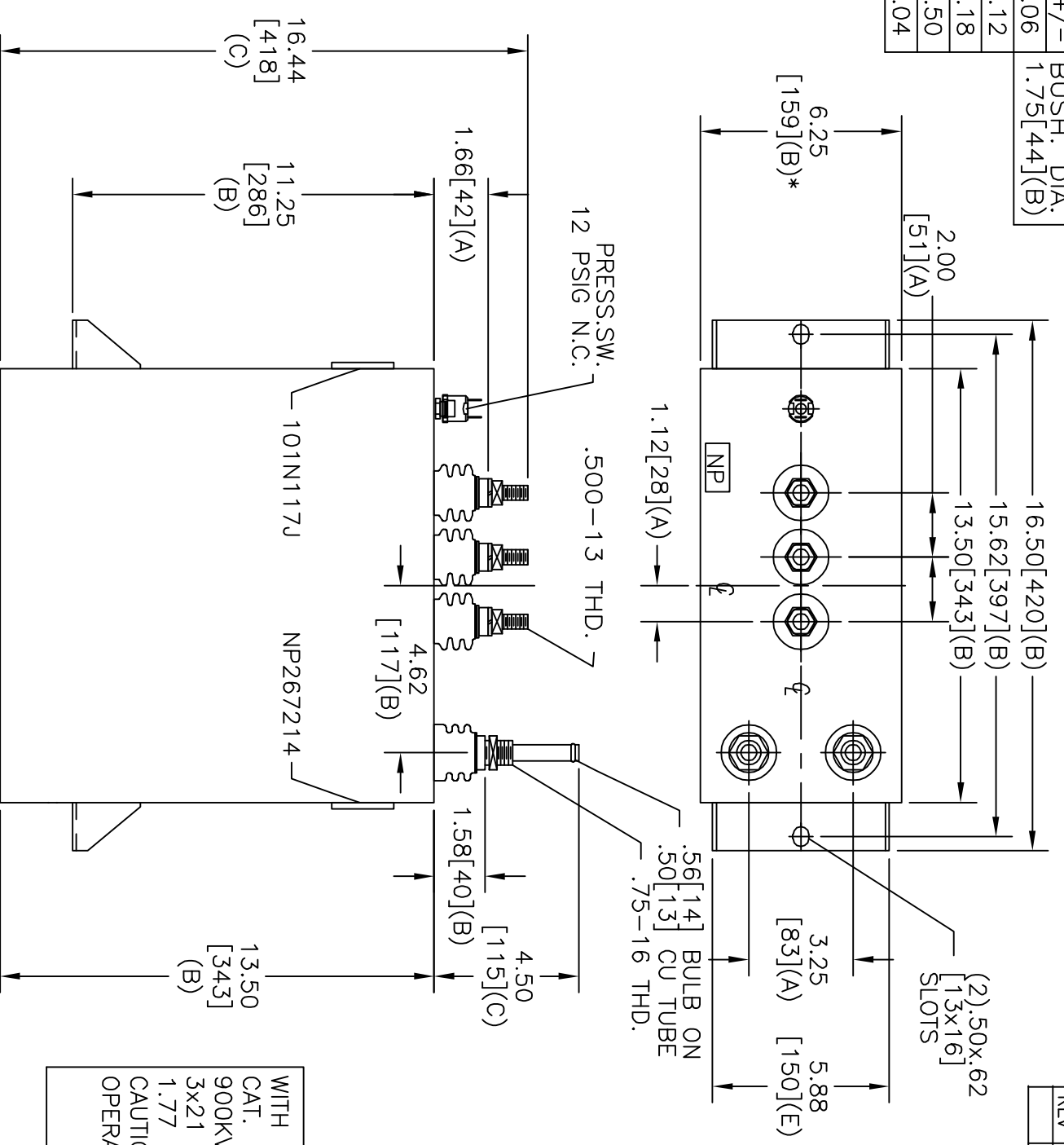
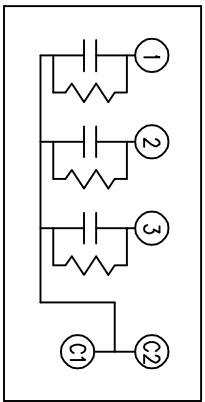


TOL	+/-	BUSH. DIA.
A	.06	1.75[.44](B)
B	.12	
C	.18	
D	.50	
E	.04	



SIZE	DWG NO	SHT	REV
A	19L0420WH4	2	
REV	DESCRIPTION	DATE	APPROVED
			BTR

TERM	UF	KVAR
1	20	300
2	20	300
3	20	300



SCHEMATIC DIAGRAM - 327

WITH INTERNAL DISCH RESISTORS
 CAT. 19L0420WH4 SN
 900KVAR 1800V 700HZ 1PH
 3x21 UF/TAP
 1.77 GAL. COMBUSTIBLE LIQUID
 CAUTION! BEFORE INSTALLING OR
 OPERATING READ GEH-2733

NP267214

* UP TO +.50[13]
 CASE BULGE

MAX. TERMINAL
 TIGHTENING TORQUE
 15 FT-LBS

NP267192A

INDUSTRIAL SYSTEMS
 FORT EDWARD, N.Y., U.S.A.

DRAWN	B.ROSS	DATE	JUN 6, 2005
ISSUED		SCALE	

SIZE **A**

OUTLINE

19L0420WH4

SHEET 2 CONT 3