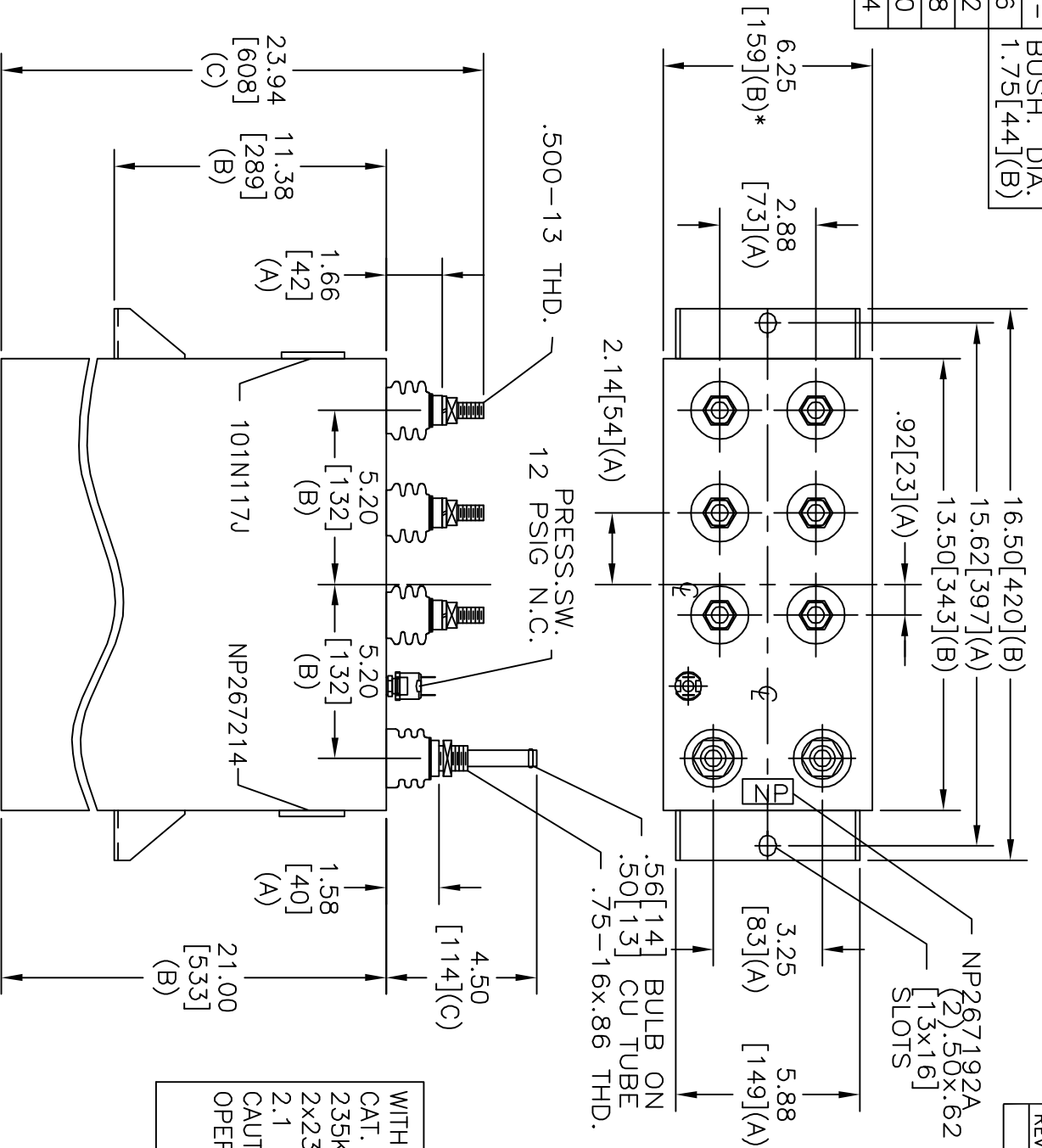
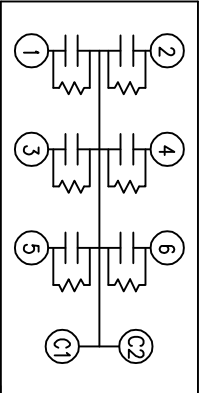


TOL	+/-	BUSH. DIA.
A	.06	1.75[44](B)
B	.12	
C	.18	
D	.50	
E	.04	



SIZE	DWG NO	SHT	REV
A	19L0428WH4	2	
REV	DESCRIPTION	DATE	APPROVED

TERM	UF	KVAR
1	233.8	80
2	233.8	80
3	58.5	20
4	116.9	40
5	14.6	5
6	29.2	10



SCHEMATIC DIAGRAM - 617

WITH INTERNAL DISCH RESISTORS  
 CAT. 19L0428WH4 SN  
 235KVAR 550V 180HZ 1PH  
 2x234+59+117+15+29 UF/TAP  
 2.1 GAL. COMBUSTIBLE LIQUID  
 CAUTION! BEFORE INSTALLING OR  
 OPERATING READ GEH-2733  
 NP267214

\* UP TO +.50[13]  
 CASE BULGE

MAX. TERMINAL  
 TIGHTENING TORQUE  
 15 FT-LBS

INDUSTRIAL SYSTEMS  
 FORT EDWARD, N.Y., U.S.A.

DRAWN B. ROSS  
 DATE FEB 10, 2004

ISSUED

DATE

SCALE

A

OUTLINE

19L0428WH4

SHEET

2

CONT

3

DISTR. TO