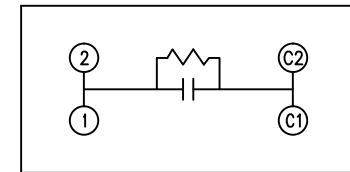
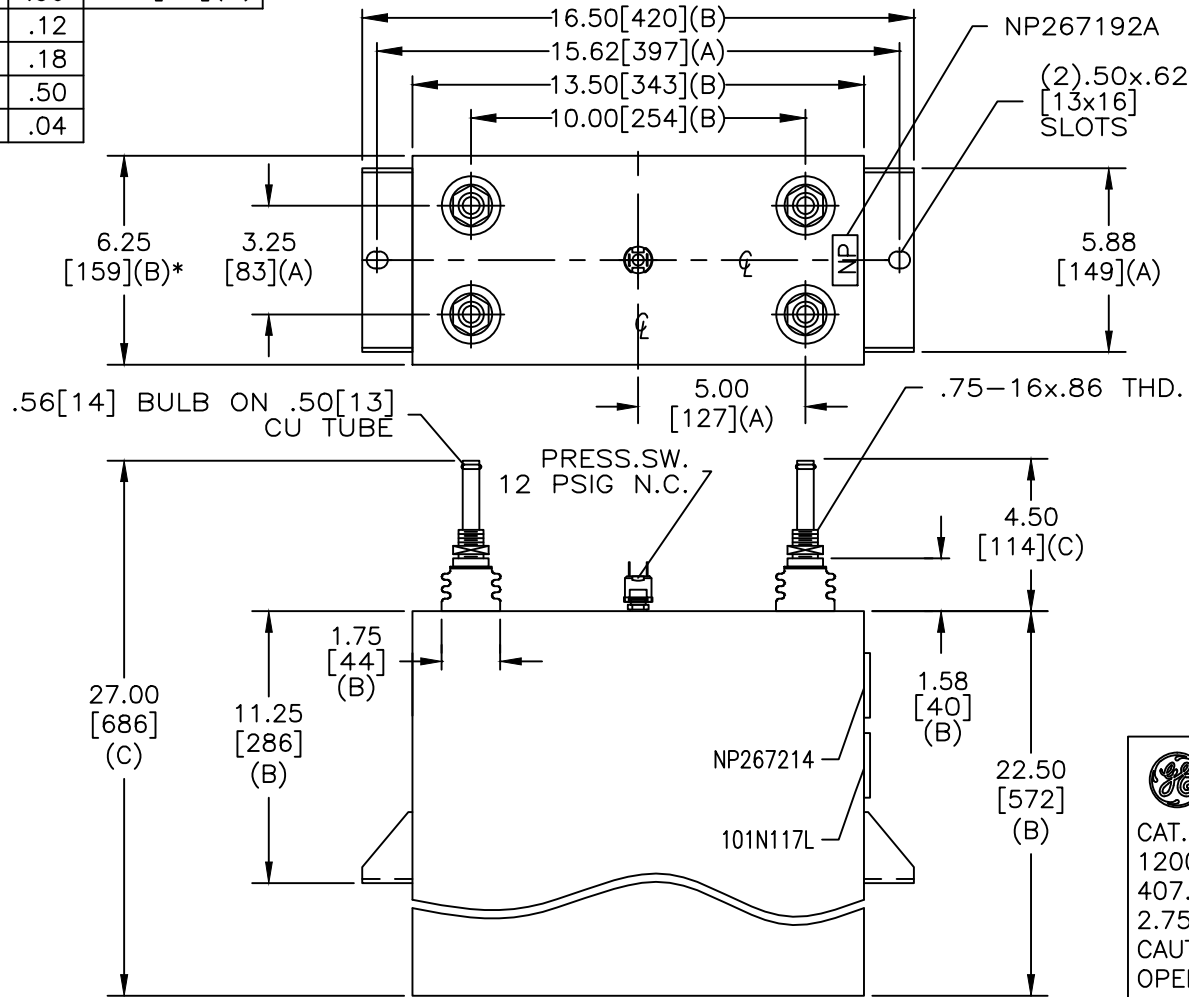


SIZE A	DWG NO 19L0435WH4	SHT 2	REV 2
REV 2	DESCRIPTION UPDATE OUTLINE	DATE 9/26/11	APPROVED DMR

TOL	+/-	BUSH. DIA.
A	.06	1.75[44](B)
B	.12	
C	.18	
D	.50	
E	.04	



SCHEMATIC DIAGRAM - 107

GE CAPACITOR
WITH INTERNAL DISCHARGE RESISTORS
CAT. 19L0435WH4 SN
1200KVAR 1250V 300HZ 1PH
407.4 UF/TAP
2.75 GAL. COMBUSTIBLE LIQUID
CAUTION! BEFORE INSTALLING OR
OPERATING READ GEH-2733
MADE IN U.S.A. NP267214

* UP TO +.50[13]
CASE BULGE

MAX. TERMINAL
TIGHTENING TORQUE
15 FT-LBS

NP267192A

INDUSTRIAL SYSTEMS FORT EDWARD, N.Y., U.S.A.		SIZE A
DRAWN DMR	DATE 9-15-98	SCALE
ISSUED	DATE 9-16-98	

OUTLINE
19L0435WH4

SHEET 2 CONT ON 3

DISTR. TO