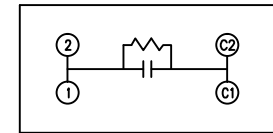
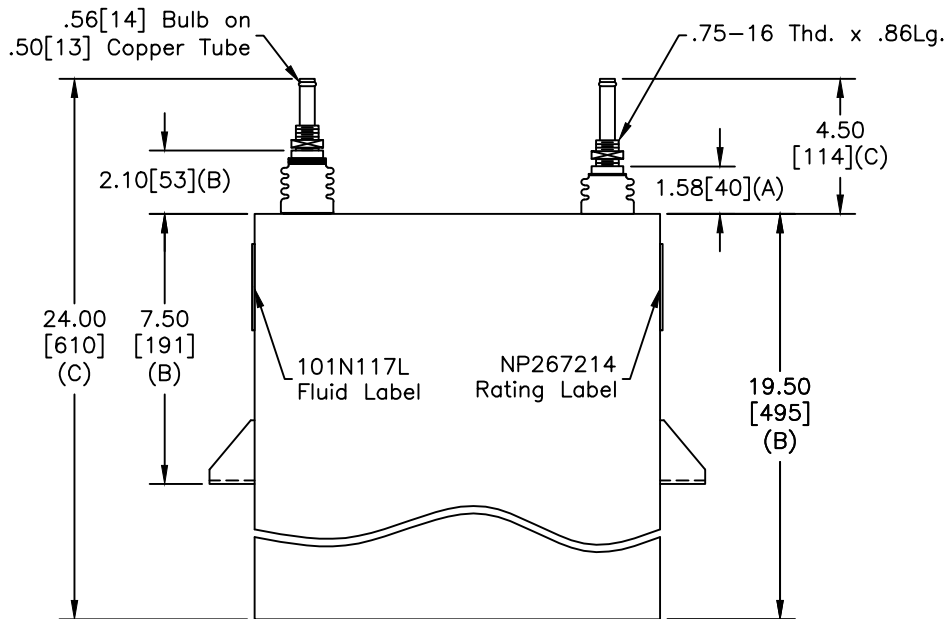
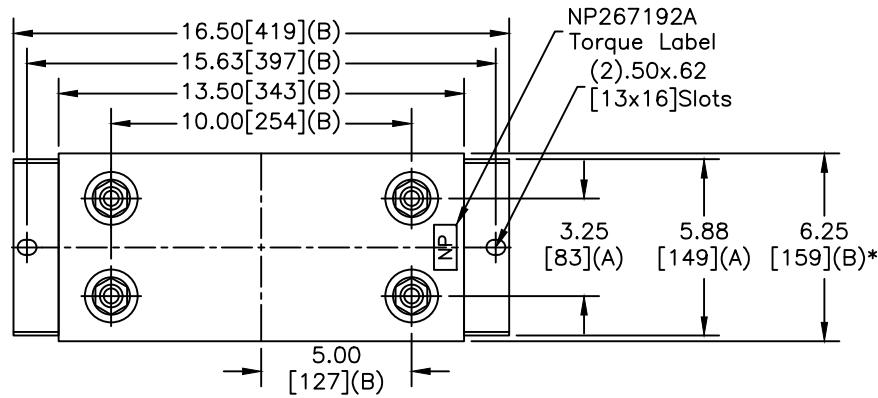


TOL	+/-
A	.06
B	.12
C	.18
D	.50
E	.04
BUSH. DIA.	1.75[44](B)

SIZE	DWG NO	SHT	REV
A	19L0444WH3	2	3
REV	DESCRIPTION	DATE	APPROVED
3	CHG TO TALL/SHORT	8/28/2012	JBC



SCHEMATIC DIAGRAM - 107

GE CAPACITOR
WITH INTERNAL DISCH RESISTORS

CAT. 19L0444WH3 SN
560 KVAR 750V 240HZ 1PH
660.2 UF
2.4 GAL. COMBUSTIBLE LIQUID
CAUTION! BEFORE INSTALLING OR
OPERATING READ GEH-2733

MADE IN U.S.A. NP267214

* UP TO +.50[13]
CASE BULGE

MAX. TERMINAL
TIGHTENING TORQUE
15 FT-LBS.

NP267192A

GE ENERGY FORT EDWARD, N.Y., U.S.A.		SIZE A
DRAWN	EPC	DATE 11/15/1996
ISSUED		DATE 11/15/1996

SCALE	WC1	OUTLINE 19L0444WH3	
SHEET	2	CONT	ON -

DISTR. TO