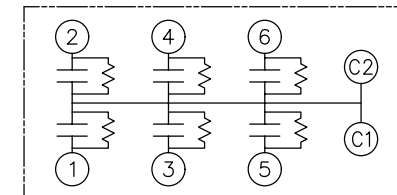
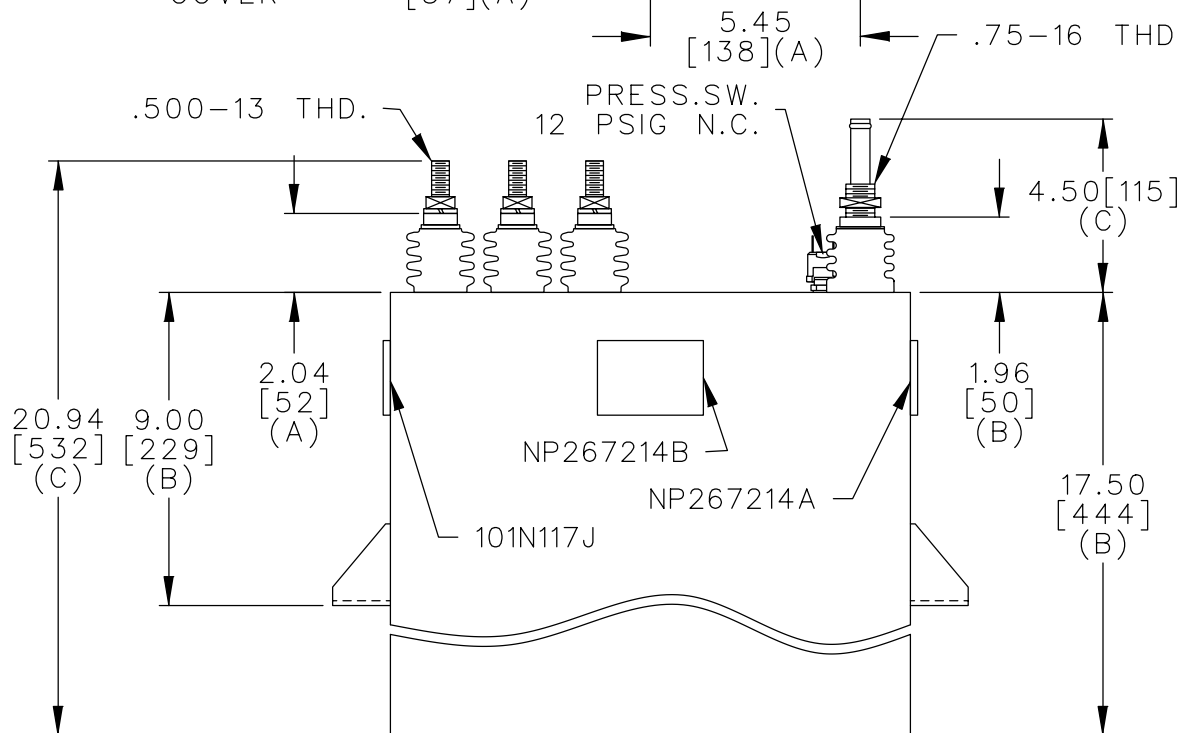


TOL	+/-	BUSH. DIA.
A	.06	1.75[44](B)
B	.12	
C	.18	
D	.50	
E	.04	




WITH INTERNAL DISCH RESISTORS
CAT. 19L0478WH4 SN
1800KVAR 2500V 700HZ 1PH
3x21.UF/SECTION
2.2 GALS. COMBUSTIBLE LIQUID
CAUTION! BEFORE INSTALLING OR
OPERATING READ GEH-2733
NP267214A



A1	B1	C1	Σ
A2	B2	C2	CO
A1 TO	A2 –	2500V –	21.8UF
B1 TO	B2 –	2500V –	21.8UF
C1 TO	C2 –	2500V –	21.8UF
NP267214B			

MAX. TERMINAL
TIGHTENING TORQUE
15 FT-LBS

	<i>CAPACITOR & POWER PROTECTION</i> <i>FORT EDWARD, N.Y., U.S.A.</i>	
	DRAWN E.McGINN	JAN. 14, 1997
ISSUED	1-15-97	

SIZE	A
------	---

OUTLINE
19L0478WH4

SHEET	2	CONT.	7
		ON	5

DISTR TO