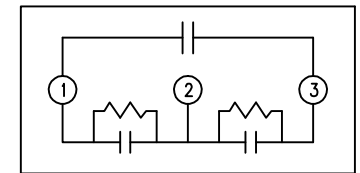
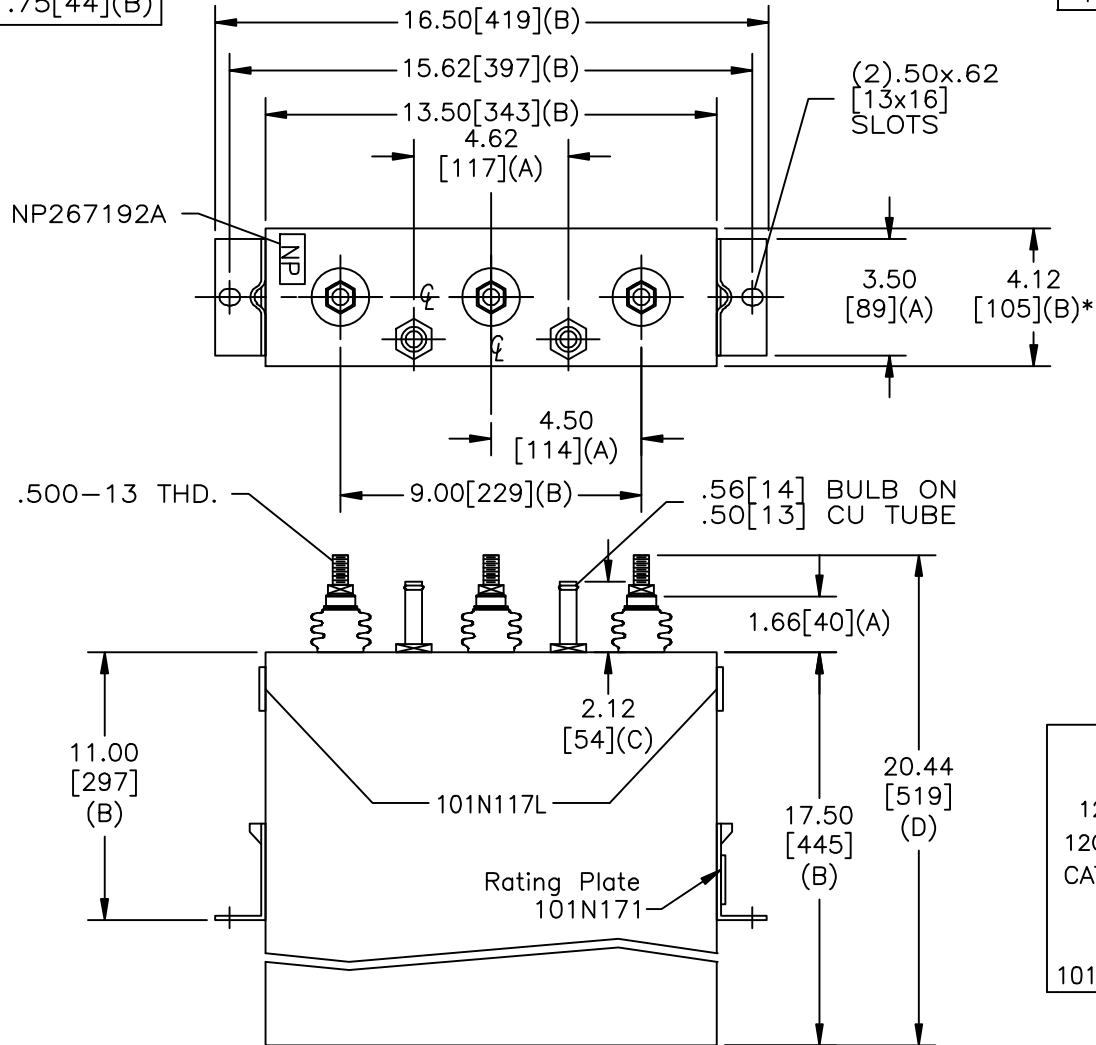


TOL	+/-	BUSH. DIA.
A	.06	1.75[44](B)
B	.12	
C	.18	
D	.50	
E	.04	

SIZE	DWG NO	SHT	REV
A	19L0487WH3	2	
REV	DESCRIPTION	DATE	APPROVED
1	101N117L WAS J	11/04/2010	JBC



1200V	3 PH	kVBIL
120	KVAR	60 Hz
CAT	19L0487WH3	SN
	1.62 GAL.	
	MFG DATE	
101N171	READ	GEH- 2733

\* UP TO +.50[13] CASE BULGE

MAX. TERMINAL TIGHTENING TORQUE  
15 FT-LBS  
NP267192A

<b>GE ENERGY</b> FORT EDWARD, N.Y., U.S.A.		SIZE <b>A</b>
DRAWN	E. McGinn	DATE 12/17/1996
ISSUED		DATE 12/17/1996

<b>OUTLINE</b> <b>19L0487WH3</b>		SHEET 2 CONT ON 3
-------------------------------------	--	----------------------

DISTR. TO