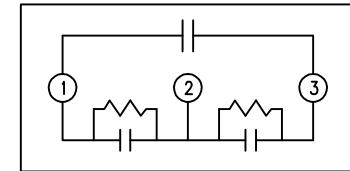
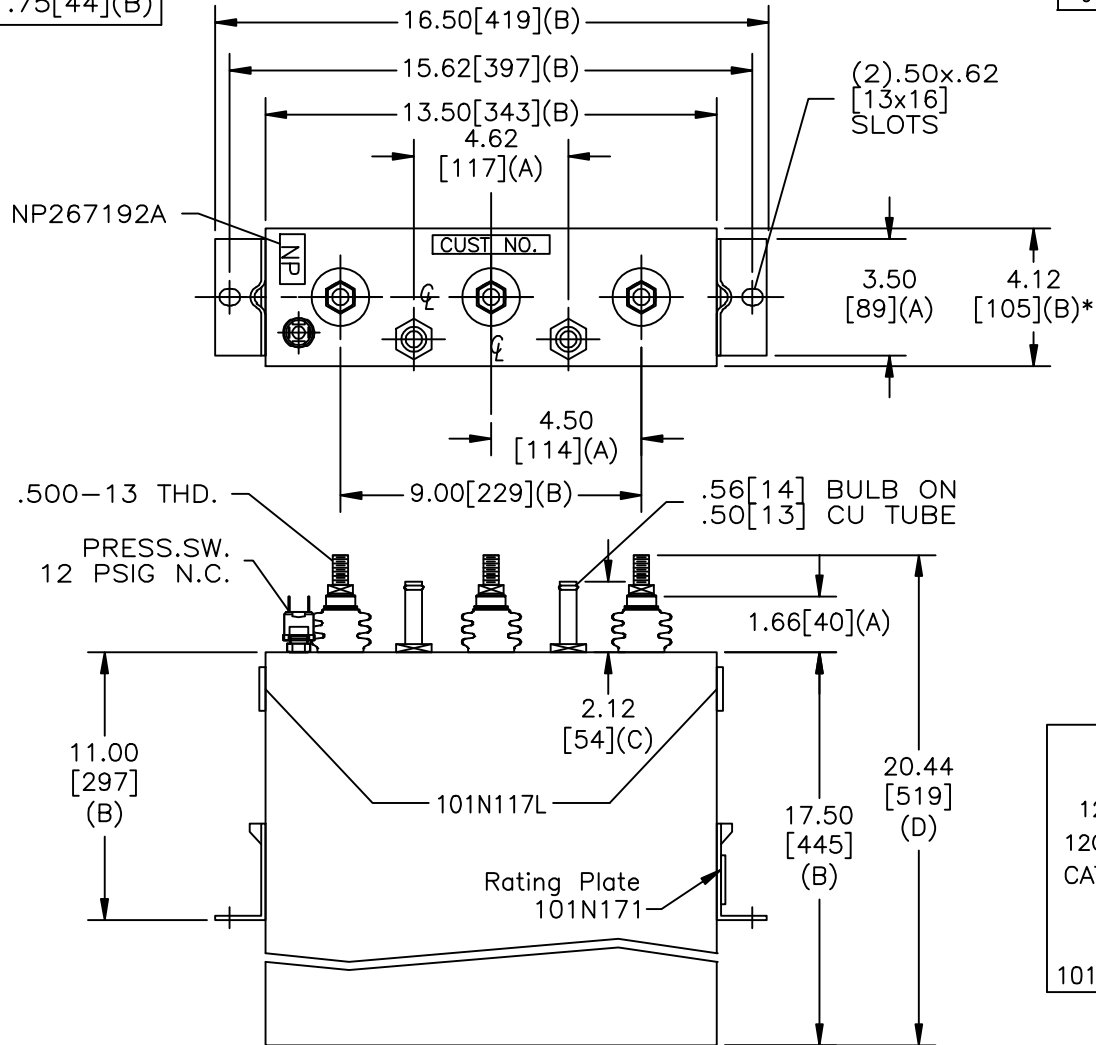


SIZE A	DWG NO 19L0487WH4	SHT 2	REV
REV 3	DESCRIPTION DEL COM NP	DATE 11/04/2010	APPROVED JBC

TOL	+/-	BUSH. DIA.
A	.06	1.75[44](B)
B	.12	
C	.18	
D	.50	
E	.04	



1200V	3 PH	kVBIL
120	KVAR	60 Hz
CAT	19L0487WH4	SN
	1.62 GAL.	
	MFG DATE	
101N171	READ	GEH- 2733

* UP TO +.50[13] CASE BULGE

MAX. TERMINAL TIGHTENING TORQUE
15 FT-LBS
NP267192A

GE ENERGY FORT EDWARD, N.Y., U.S.A.		SIZE A
DRAWN E. McGinn	DATE 12/4/1996	SCALE
ISSUED	DATE 11/21/1996	

OUTLINE
19L0487WH4

SHEET 2 CONT ON 3

DISTR. TO