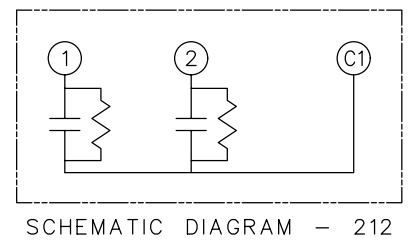
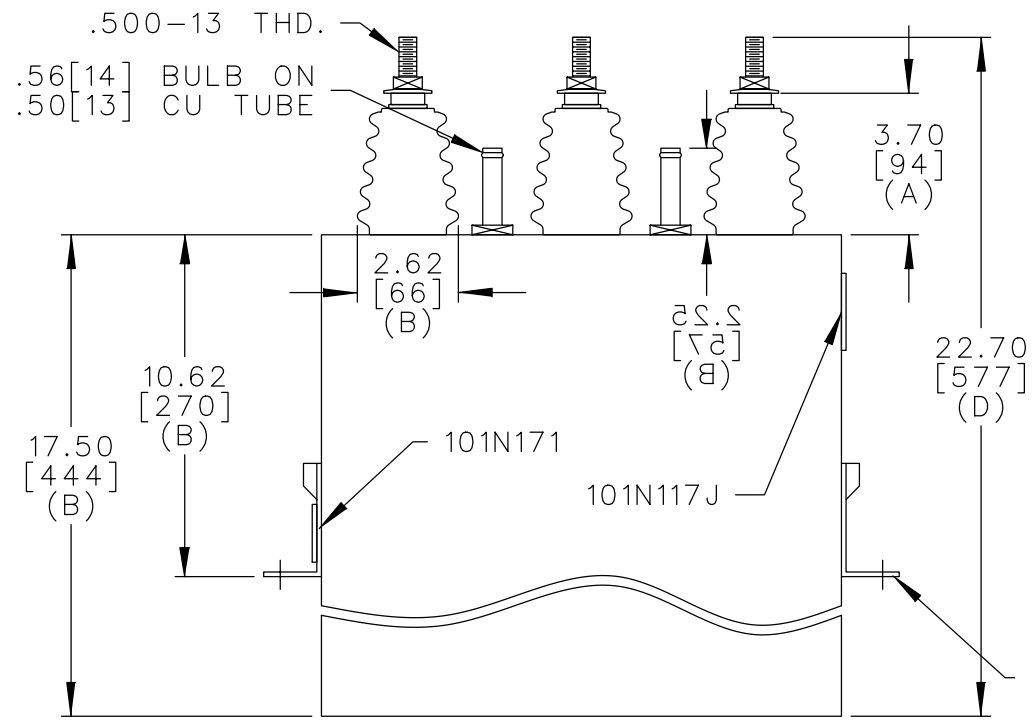
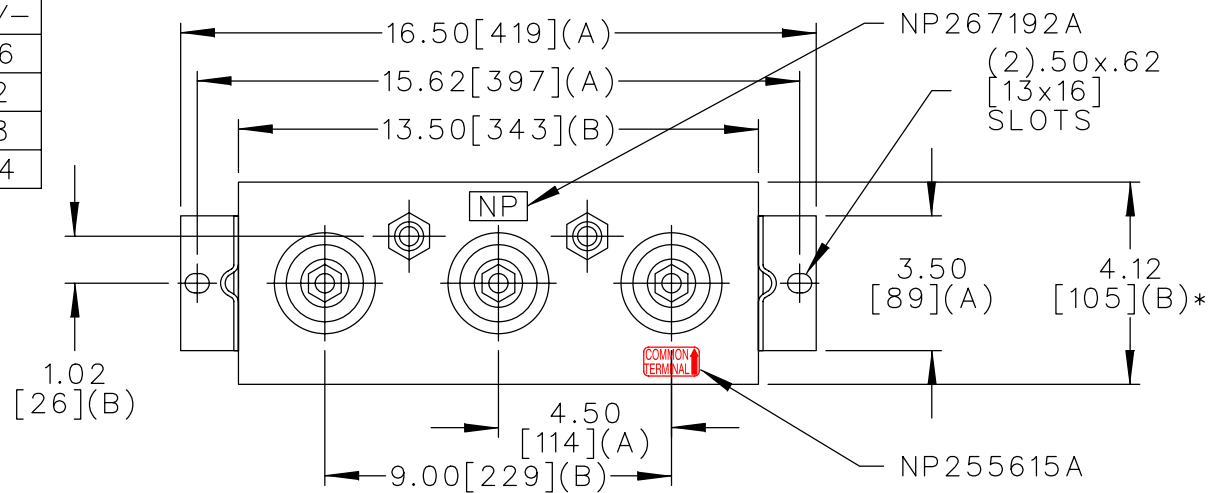


SIZE A	DWG NO. 19L0495WH3	SH 2	REV
REV 1	McGINN UPDATE CAT NO		

TOL	+/-
A	.06
B	.12
C	.18
D	.04



2 x 60 KVAR SECTIONS
 2400V 1PH
 120KVAR 60HZ KVBIL
 CAT. 19L0495WH3 NO.
 1.76 GAL.
 MFG DATE
 GEH-2733

* UP TO +.50 [13] CASE BULGE

MAX. TERMINAL TIGHTENING TORQUE 15 FT-LBS

NP267192A

	CAPACITOR & POWER PROTECTION FORT EDWARD, N.Y., U.S.A.		SIZE A	FSCM NO	OUTLINE 19L0495WH3	DISTR TO
	DRAWN E.McGINN ISSUED 6-4-97	JUNE 3, 1997	SCALE	SHEET 2 CONT ON 3		