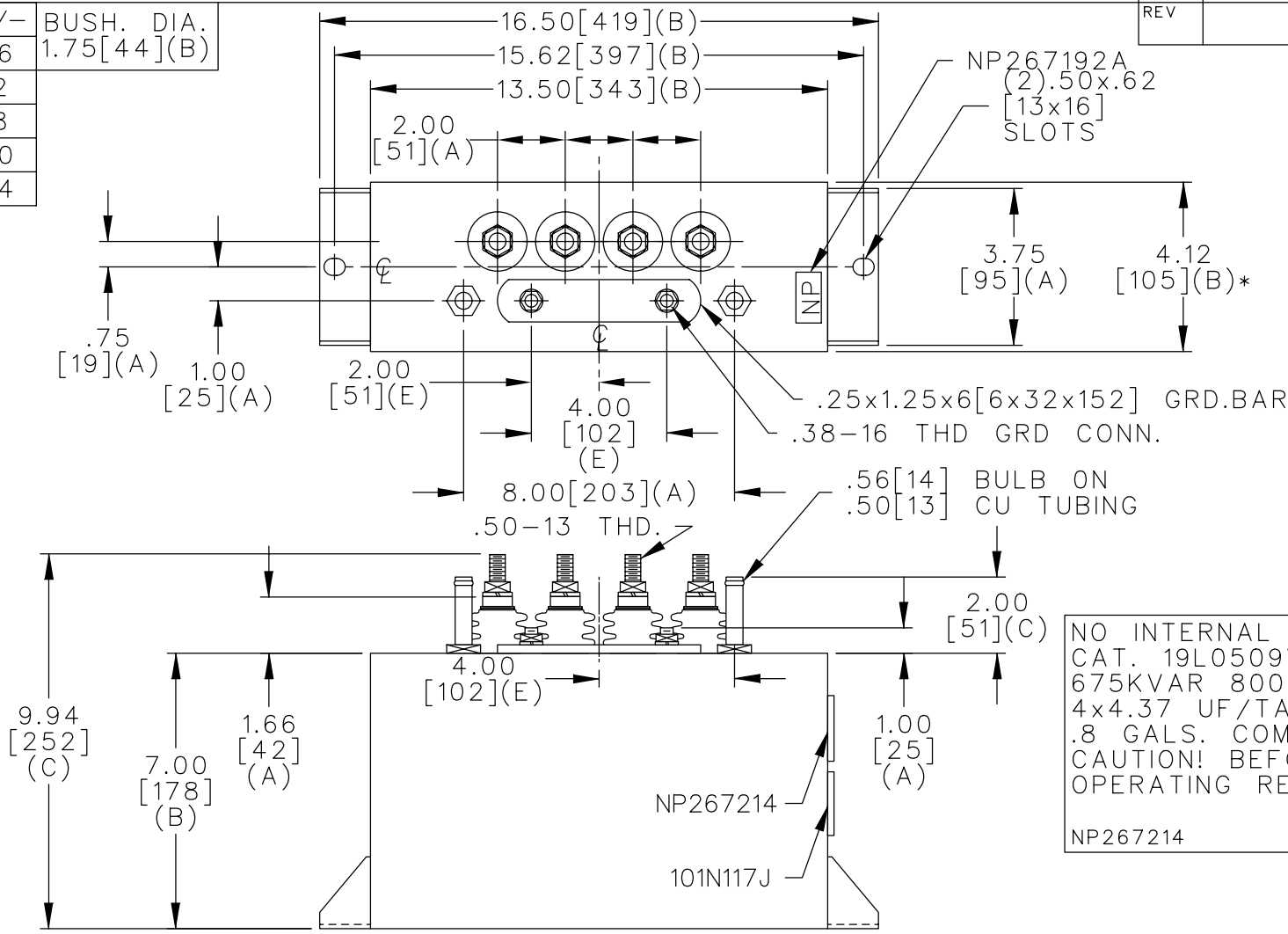
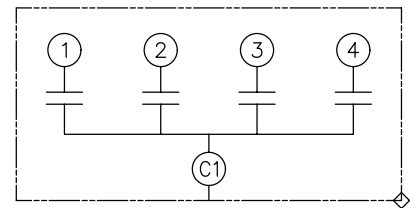


TOL	+/-	BUSH. DIA.
A	.06	1.75[44](B)
B	.12	
C	.18	
D	.50	
E	.04	



TERM	uF	kVAR
1	4.37	168
2	4.37	168
3	4.37	168
4	4.37	168



SCHEMATIC DIAGRAM - 416

NO INTERNAL DISCH RESISTORS
 CAT. 19L0509WH3 SN
 675KVAR 800V 9600HZ 1PH
 4x4.37 UF/TAP
 .8 GALS. COMBUSTIBLE LIQUID
 CAUTION! BEFORE INSTALLING OR
 OPERATING READ GEH-2733
 NP267214

* UP TO +.50[13]
 CASE BULGE

MAX. TERMINAL
 TIGHTENING TORQUE
 15 FT-LBS

NP267192A

	CAPACITOR & POWER PROTECTION FORT EDWARD, N.Y., U.S.A.		SIZE A	OUTLINE 19L0509WH3	SHEET 2 CONT. ON -
	DRAWN E.McGINN	NOV. 14, 1996	SCALE		
ISSUED					