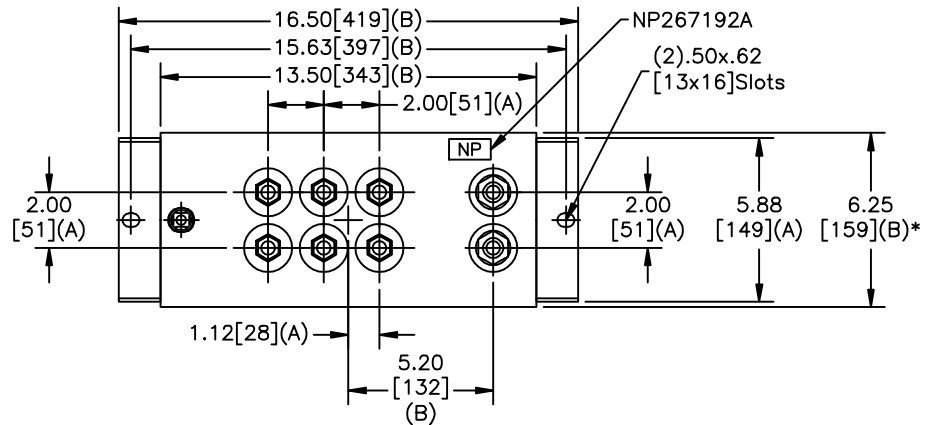
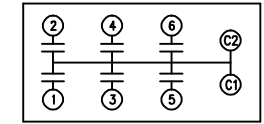
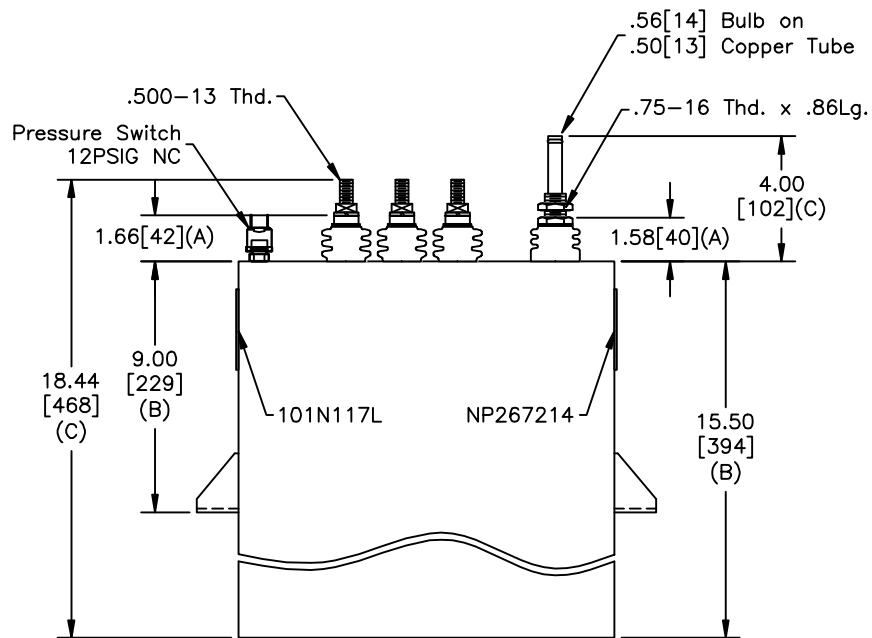


TOL	+/-
A	.06
B	.12
C	.18
D	.50
E	.04
BUSH. DIA.	1.75[44](B)

SIZE A	DWG NO 19L0510WH4	SHT 2	REV 2
REV 2	DESCRIPTION Correct Coil SP was 4.62	DATE 10/08/2010	APPROVED JBC



TERM	uF	kVAR
1	50.95	125
2	50.95	125
3	76.43	188
4	76.43	188
5	76.43	188
6	76.43	188



SCHEMATIC DIAGRAM - 615

NO INTERNAL DISCH RESISTORS
 CAT. 19L0510WH4 SN
 1000KVAR 625V 1000HZ 1PH
 2x50.05+4x76.43 UF/TAP
 1.91 GAL. COMBUSTIBLE LIQUID
 CAUTION! BEFORE INSTALLING OR
 OPERATING READ GEH-2733
 MADE IN USA NP267214

- NOTES:
 1. Maximum terminal tightening torque
 .50-13 thd. 15 ft-lbs. 20.3 N-m
 .75-16 thd. 25 ft-lbs. 33.9 N-m
 2. Minimum water flow 1 GPM (3.8 l/m)

* UP TO +.50[13] CASE BULGE

MAX. TERMINAL TIGHTENING TORQUE 15 FT-LBS.

GE ENERGY FORT EDWARD, N.Y., U.S.A.	
DRAWN McGinn	DATE 12/20/1996
ISSUED	DATE 01/08/1997

SIZE A	Est Weight 69 lbs.
SCALE	WC15

OUTLINE 19L0510WH4	
SHEET 2	CONT ON 3

DISTR. TO