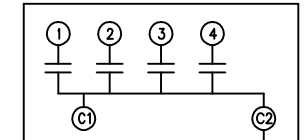
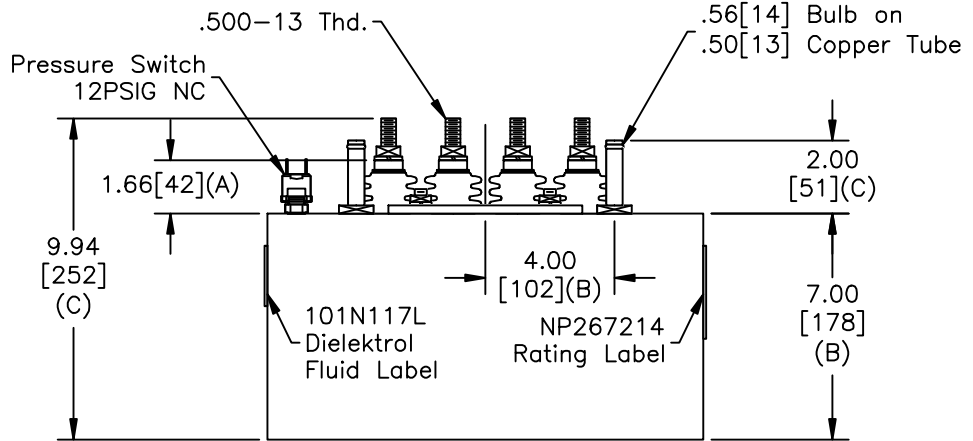
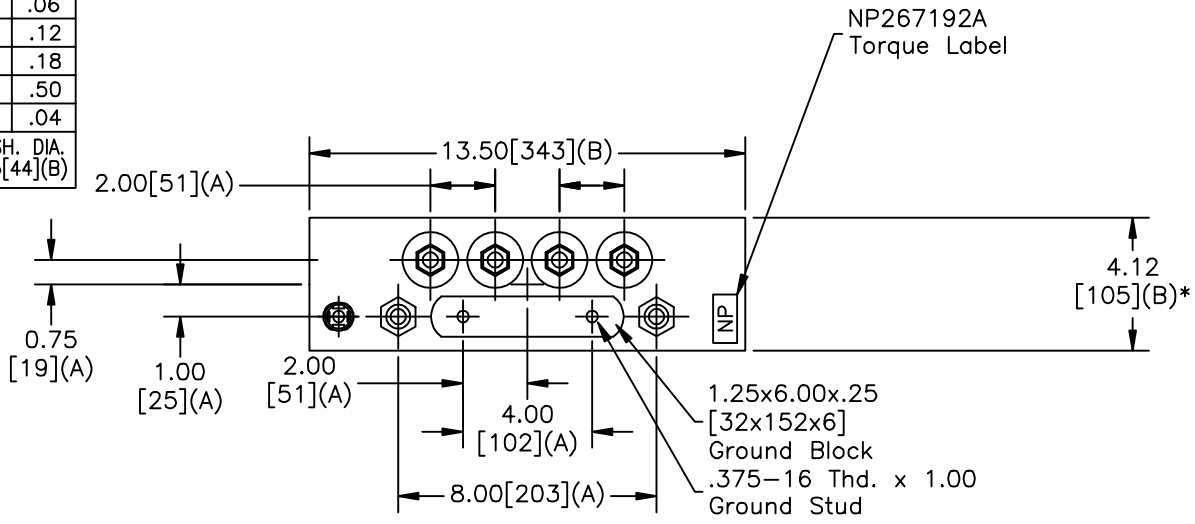


SIZE A	DWG NO 19L0519WH2	SHT 2	REV
REV	DESCRIPTION	DATE	APPROVED

TERM	uF	kVAR
1	4.97	200
2	4.97	200
3	4.97	200
4	4.97	200

TOL	+/-
A	.06
B	.12
C	.18
D	.50
E	.04
BUSH. DIA.	1.75[44](B)



SCHEMATIC DIAGRAM - 436

**GE CAPACITOR**  
NO INTERNAL DISCHARGE RESISTORS  
CAT. 19L0519WH2 SN  
800KVAR 800V 10000HZ 1PH  
4x4.97UF/TAP  
0.78 GAL. COMBUSTIBLE LIQUID  
CAUTION! BEFORE INSTALLING OR  
OPERATING READ GEH-2733  
MADE IN USA NP267214

\* UP TO +.50[13] CASE BULGE

MAX. TERMINAL TIGHTENING TORQUE 15 FT-LBS.  
NP267192A

<b>GE ENERGY</b> FORT EDWARD, N.Y., U.S.A.	SIZE A	Est Weight 27 lbs.	<h1>OUTLINE</h1> <h2>19L0519WH2</h2>		DISTR. TO
	DRAWN B.Ross ISSUED				