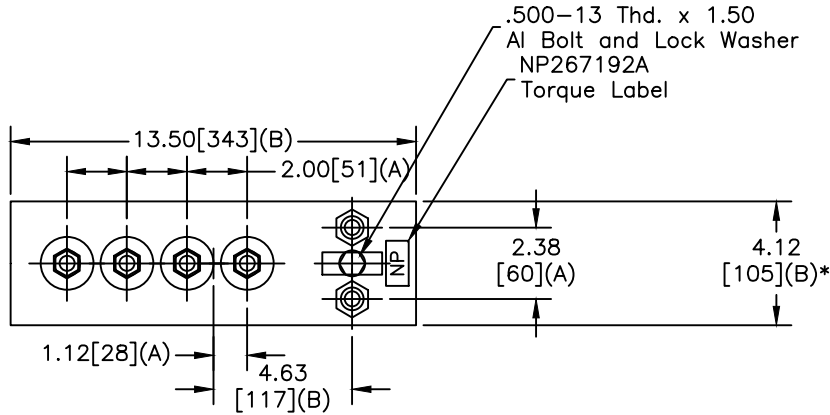
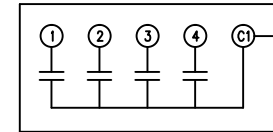
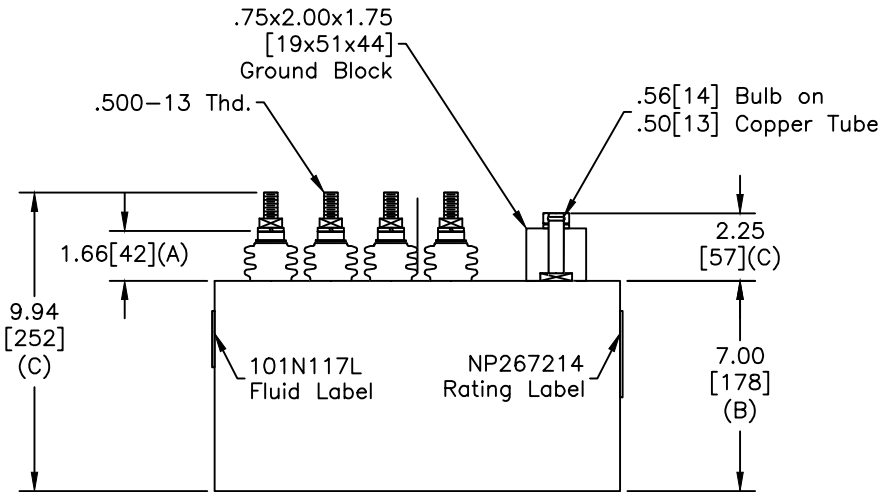


TOL	+/-
A	.06
B	.12
C	.18
D	.50
E	.04
BUSH. DIA.	1.75[44](B)

SIZE	DWG NO	SHT	REV
A	19L0520WH1	2	2
REV	DESCRIPTION	DATE	APPROVED
2	101N117L WAS J	7/19/2007	BTR



TERM	uF	kVAR @9.6 kHz	kVAR @9.6 kHz
1	8.55	103.15	-
2	3.89	46.93	150
3	3.89	46.93	150
4	8.55	103.15	-



SCHEMATIC DIAGRAM - 401

NO INTERNAL DISCHARGE RESISTORS
 CAT. 19L0520WH1 SN
 300KVAR 800V 3000HZ 1PH
 300KVAR 800V 9600HZ TAPS 2+3
 0.89 GAL. COMBUSTIBLE LIQUID
 CAUTION! BEFORE INSTALLING OR
 OPERATING READ GEH-2733

MADE IN USA

NP267214

* UP TO +.50[13] CASE BULGE

MAX. TERMINAL TIGHTENING TORQUE 15 FT-LBS.

NP267192A

	GE ENERGY FORT EDWARD, N.Y., U.S.A.		SIZE	Est Weight 25 lbs.	OUTLINE 19L0520WH1				
	DRAWN	McGINN	DATE					1/28/1997	
ISSUED		DATE	4/23/1997	SCALE	WC11	SHEET	2	CONT ON	-

DISTR. TO