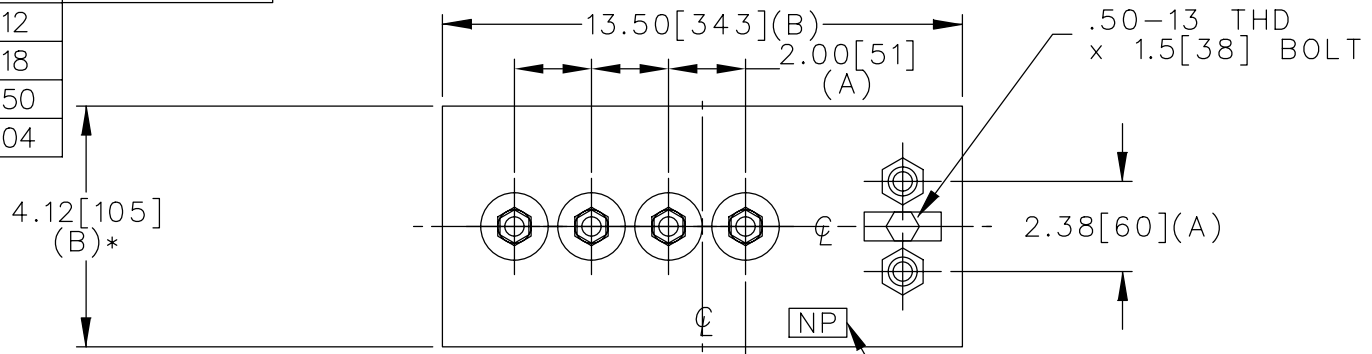
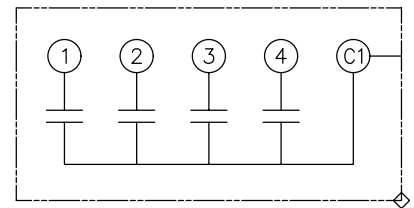


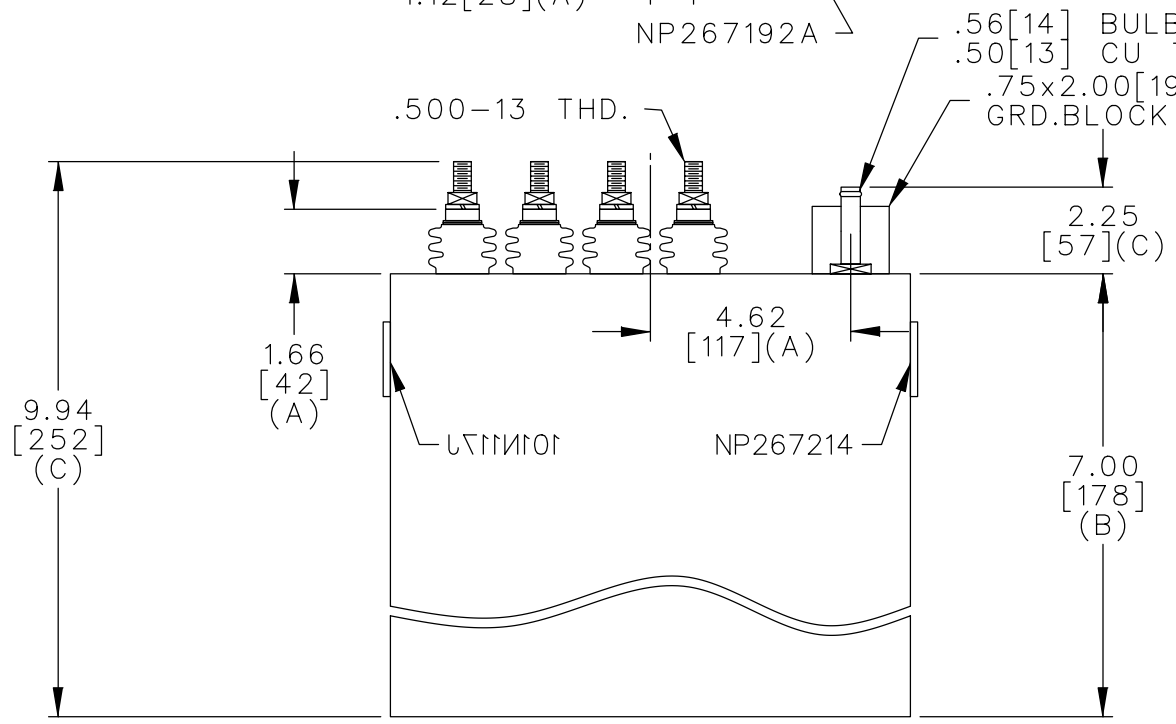
TOL	+/-	BUSH. DIA.
A	.06	1.75[44](B)
B	.12	
C	.18	
D	.50	
E	.04	



TERM	uF	kVAR
1	0.388	15
2	0.388	15
3	0.388	15
4	0.388	15



SCHEMATIC DIAGRAM - 401



NO INTERNAL DISCH RESISTORS  
 CAT. 19L0547WH1  
 60KVAR 800V 9600HZ 1PH  
 .389 UF/TAP  
 .9 GALS. COMBUSTIBLE LIQUID  
 CAUTION! BEFORE INSTALLING  
 OR OPERATING READ GEH-2733  
 NP267214

\* UP TO +.50[13]  
 CASE BULGE

MAX. TERMINAL  
 TIGHTENING TORQUE  
 15 FT-LBS

NP267192A

	CAPACITOR & POWER PROTECTION FORT EDWARD, N.Y., U.S.A.		SIZE <b>A</b>	<h1>OUTLINE</h1> <h2>19L0547WH1</h2>		SHEET 2	CONT. ON -
	DRAWN E.McGINN	MAY 4, 1998	SCALE				
ISSUED	5-6-98		DISTR TO				