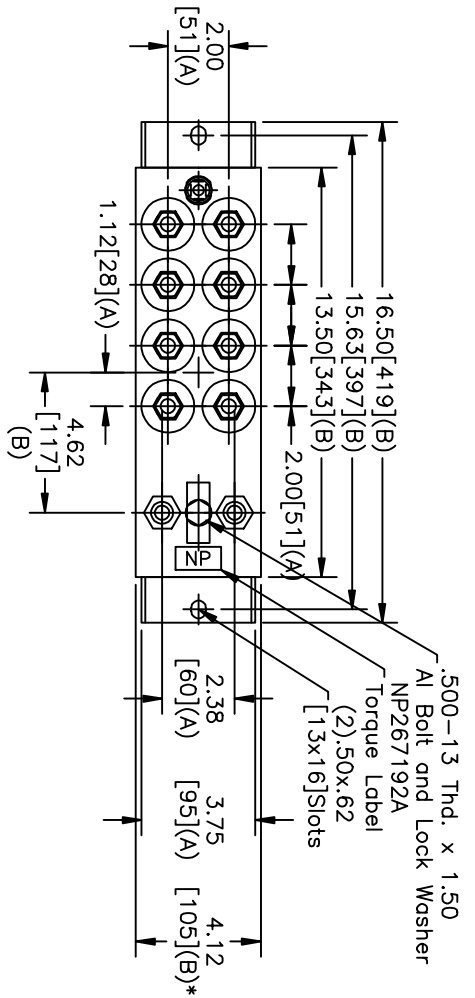
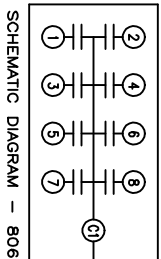
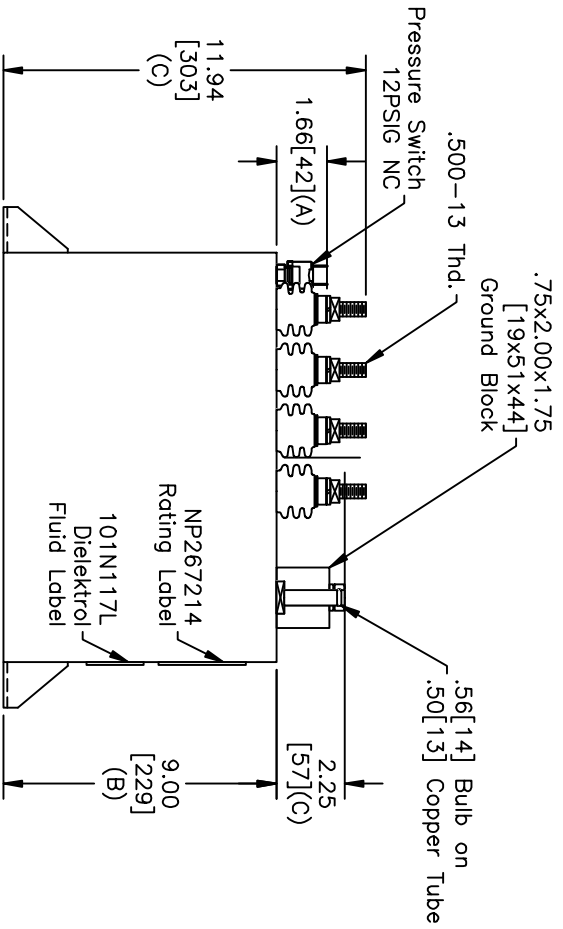



TOL	+/-
A	.06
B	.12
C	.18
D	.50
E	.04
BUSH, DIA	
	1.75[.44](B)




TERM	UF	KVAR
1	3.4	100
2	3.4	100
3	3.4	100
4	3.4	100
5	6.8	200
6	6.8	200
7	6.8	200
8	6.8	200




CAPACITOR
 NO INTERNAL DISCHARGE RESISTORS
 CAT. 19L0554WH4 SN
 1200KVAR 1250V 3000HZ 1PH
 4x3.4+4x6.8UF/TAP
 0.8 GAL. COMBUSTIBLE LIQUID
 CAUTION! BEFORE INSTALLING OR
 OPERATING READ GEH-2733
 NP267214
 MADE IN USA

* UP TO +.50[.13] CASE BULGE

MAX. TERMINAL
 TIGHTENING TORQUE
 15 FT.-LBS.
 NP267192A

 GE ENERGY FORT EDWARD, N.Y., U.S.A.		SIZE	A	Est Weight	32 lbs.	SHEET	2	CONT	3
DRAWN	DMR	DATE	12/27/2010	SCALE	WC15				
ISSUED		DATE	12/27/2010						

SIZE	A	DWG NO	19L0554WH4	SHT	2	REV	0
REV	0	DESCRIPTION	NEW	DATE	12/8/2010	APPROVED	DMR

DISTR. TO